



Model

KH400-A4

**Exclusive Parts List
For European Market**

**KAWASAKI HEAVY INDUSTRIES, LTD.
ENGINE AND MOTORCYCLE GROUP
1-1, Kawasaki-cho, Akashi, Hyogo Pref. Japan**

Part No. 99997-669-50 ©

Aug. 2, 1976

©Kawasaki Heavy Industries, Ltd. 1976

FOREWORD

EXCLUSIVE parts of KH400-A4, is listed in this section based on KH400-A3 PARTS CATALOGUE No. 99097-669 (Issued 30. Aug. 1975).

The parts not listed in this section, are not changed from KH400-A3.



Right Side View



Left Side View

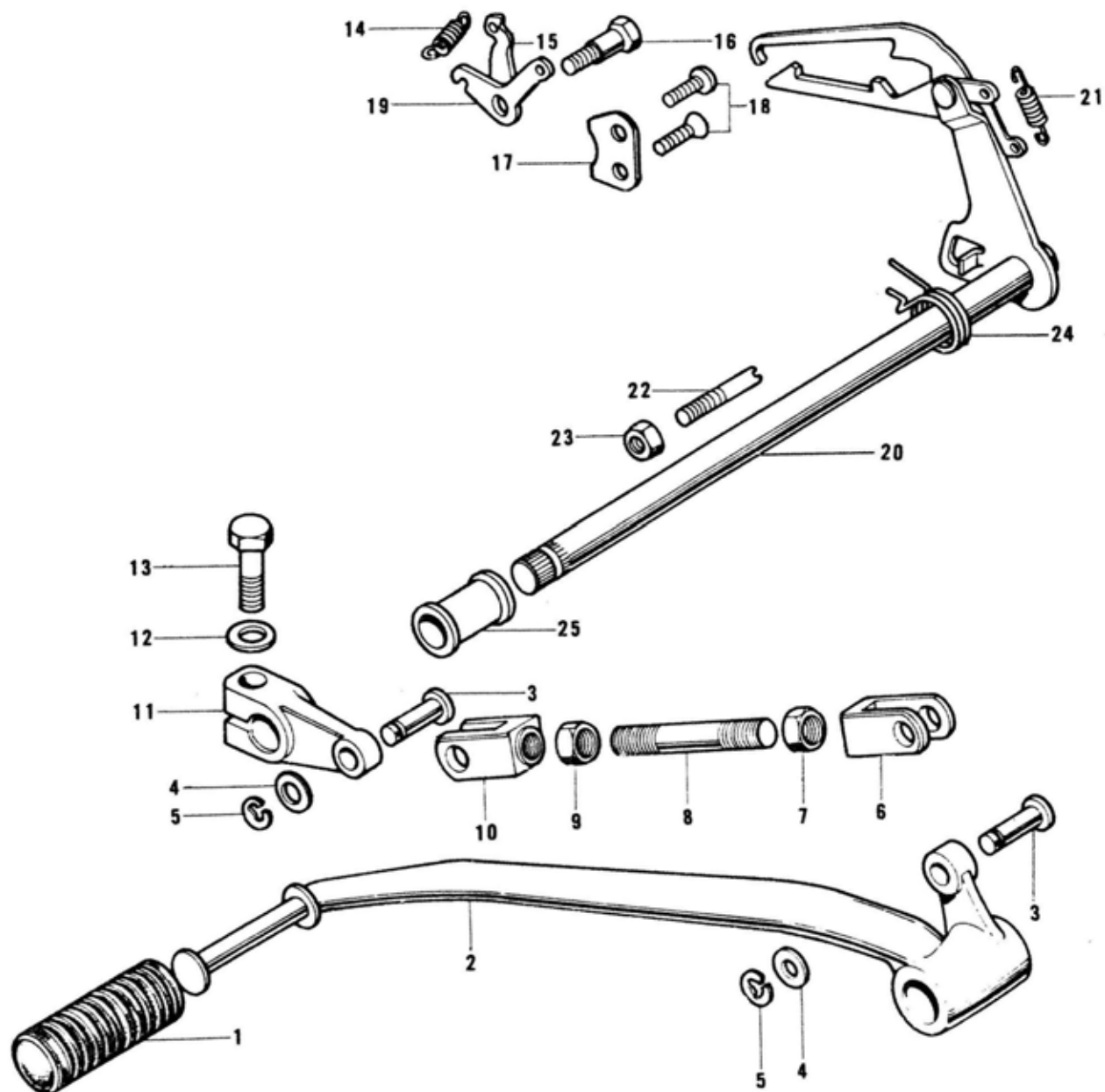


KH400-A4

Index

6. Gear Change Mechanism	1
13. Frame	3
15. Footrests, Stands, Brake Pedal	5
16. Handlebar, Grips	9
17. Front Fork	11
18. Fenders	13
19. Wheels	17
21. Disc Brake Equipment B	17
24. Fuel Tank	19
25. Oil Tank, Side Cover, Chain Cover	19
26. Dual Seat	21
29. Electrical Equipment C	23
32. Tools, Optional Parts	21
Numerical Parts Index	26

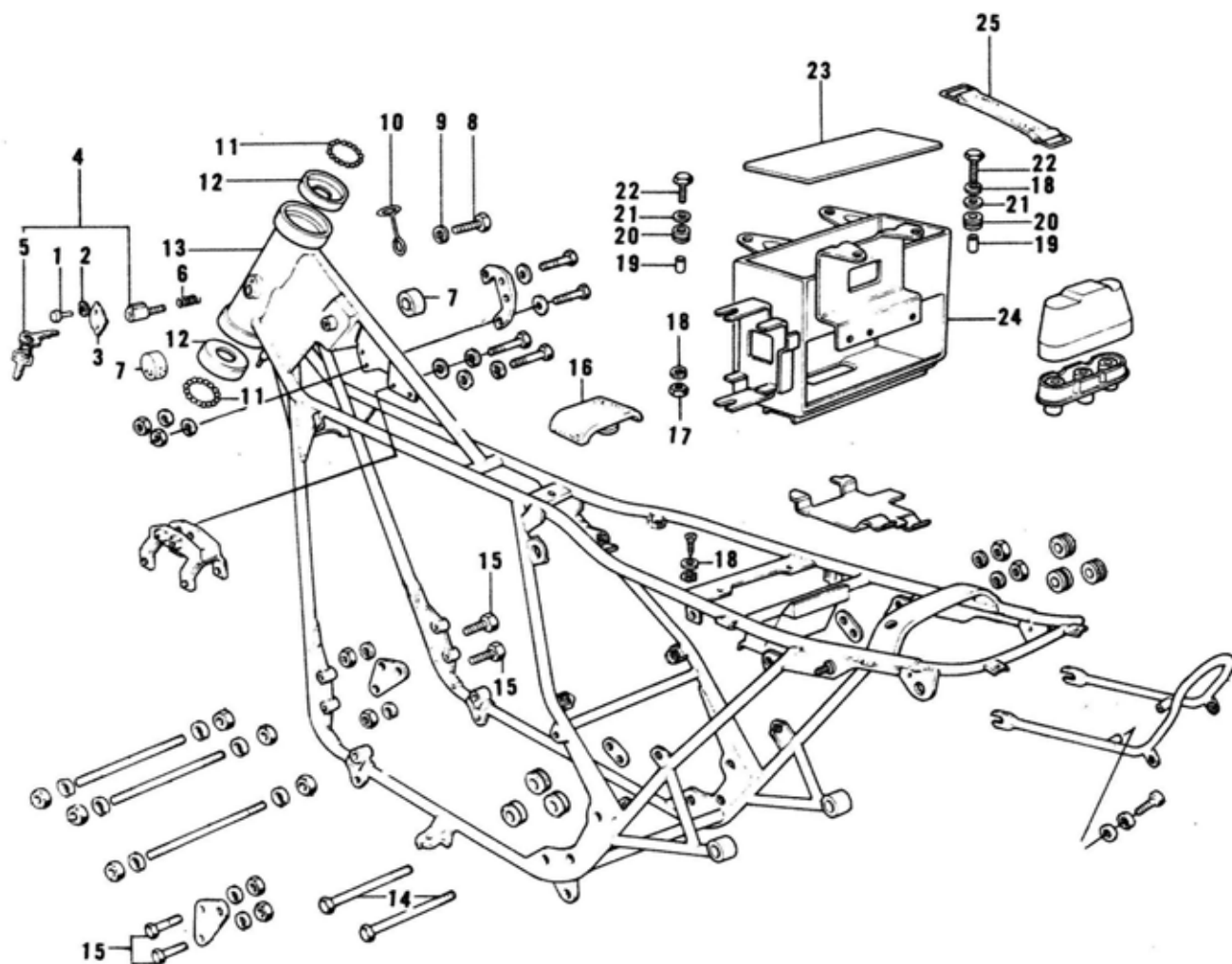
6. Gear Change Mechanism



6. Gear Change Mechanism

Ref. No.	Part No.	Part Name	Quantity	Remarks
1	13157-004	RUBBER, gear change pedal	1	
2	13156-040	PEDAL, gear change	1	
3	92043-069	PIN, joint	2	
4	92022-203	WASHER, plain, 8 m/m	2	
5	482K5000	CIRCLIP, 5 m/m	2	
6	13159-008	JOINT (Counterclock wise-thread)	1	
7	92017-010	NUT, 8 m/m (Counterclock wise-thread)	1	
8	92003-074	ROD, change shaft joint	1	
9	318N0800	NUT, 8 m/m	1	
10	13159-007	JOINT (Clock wise-thread)	1	
11	13158-007	LEVER, gear change pedal	1	
12	461F0800	WASHER, spring, 8 m/m	1	
13	110B0825	BOLT, hex head, 8 x 25	1	
14	92081-091	SPRING, gear change drum lever	1	
15	13170-005	LEVER, gear change drum	1	
16	92011-023	SCREW, gear change drum lever	1	
17	13169-007	PLATE, gear change drum position	1	
18	221B0616	SCREW, countersank head, 6 x 16	2	
19	13236-002	LEVER ASSY, gear change drum return	1	
20	13161-036	LEVER ASSY, gear change	1	
21	92081-011	SPRING, gear change lever	1	
22	92043-009	PIN, gear change pedal return spring	1	
23	312B0800	NUT, 8 m/m	1	
24	92083-032	SPRING, gear change pedal return	1	
25	13171-004	DUST SHIELD, gear change shaft	1	

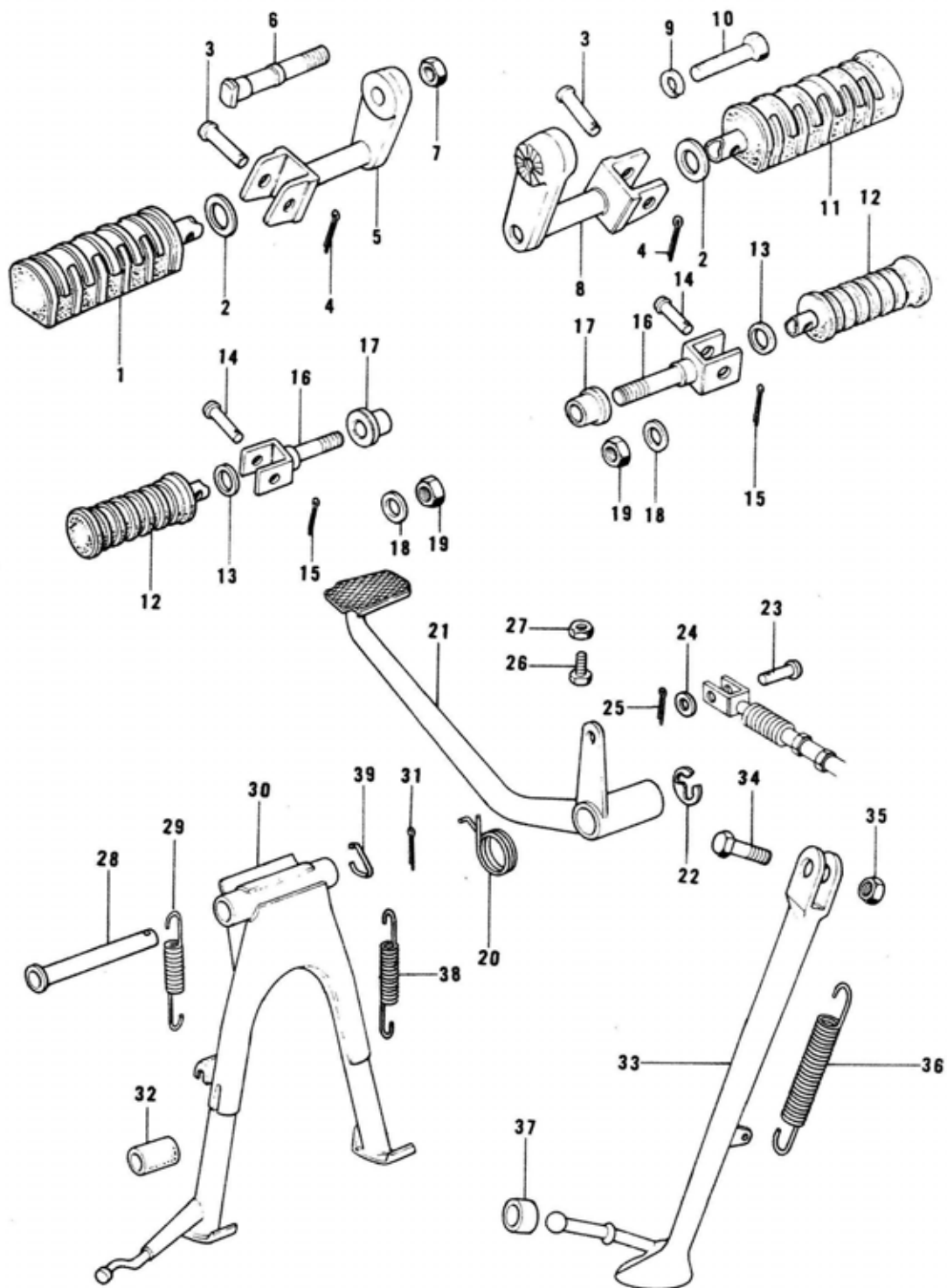
13. Frame



13. Frame

Ref. No.	Part No.	Part Name	Quantity					Remarks	
			ENGLAND	FRANCE	W. GERMANY	ITALY	SWEDEN		OTHERS
1	92008-007	SCREW, tapping	1	1	1	1	1	1	
2	92097-003	WASHER, wave	1	1	1	1	1	1	
3	27031-005	CAP, steering lock	1	1	1	1	1	1	
4	27016-038	LOCK ASSY, steering	1	1		1		1	
5		LOCK ASSY, steering			1		1		} Local Procurement Items
		KEY SET			1		1		
	27008-055-01	KEY SET, # 901	1	1		1		1	
	27008-055-02	KEY SET, # 902	1	1		1		1	
	27008-055-03	KEY SET, # 903	1	1		1		1	
	27008-055-04	KEY SET, # 904	1	1		1		1	
	27008-055-05	KEY SET, # 905	1	1		1		1	
	27008-055-06	KEY SET, # 906	1	1		1		1	
	27008-055-07	KEY SET, # 907	1	1		1		1	
	27008-055-08	KEY SET, # 908	1	1		1		1	
	27008-055-09	KEY SET, # 909	1	1		1		1	
	27008-055-10	KEY SET, # 910	1	1		1		1	
6	27032-001	SPRING, steering lock	1	1	1	1	1	1	
7	92075-101	DAMPER RUBBER, fuel tank	2	2	2	2	2	2	
8	110B0612	BOLT, hex head, 6 x 12	1	1	1	1	1	1	
9	461F0600	WASHER, spring, 6 m/m	1	1	1	1	1	1	
10	92037-108	CLAMP, cable	1	1	1	1	1	1	
11	600A0800	STEEL BALL, 1/4"	38	38	38	38	38	38	
12	92048-006	CUP, steering ball	2	2	2	2	2	2	
13	32002-133	FRAME	1	1	1	1	1	1	
14	113B10110	BOLT, hex head, 10 x 110	2	2	2	2	2	2	
15	110B0850	BOLT, hex head, 8 x 50	4	4	4	4	4	4	
16	92075-214	DAMPER RUBBER, fuel tank	1	1	1	1	1	1	
17	310B0600	NUT, 6 m/m	2	2	2	2	2	2	
18	461F0600	WASHER, spring, 6 m/m	5	5	5	5	5	5	
19	92027-129	COLLAR	4	4	4	4	4	4	
20	92075-076	DAMPER RUBBER	4	4	4	4	4	4	
21	92022-125	WASHER, Plain, 6 m/m	4	4	4	4	4	4	
22	110B0622	BOLT, hex head, 6 x 22	4	4	4	4	4	4	
23	32103-006	MAT, battery	1	1	1	1	1	1	
24	32097-037	CASE, battery	1	1	1	1	1	1	
25	92072-045	BAND, battery	1	1	1	1	1	1	

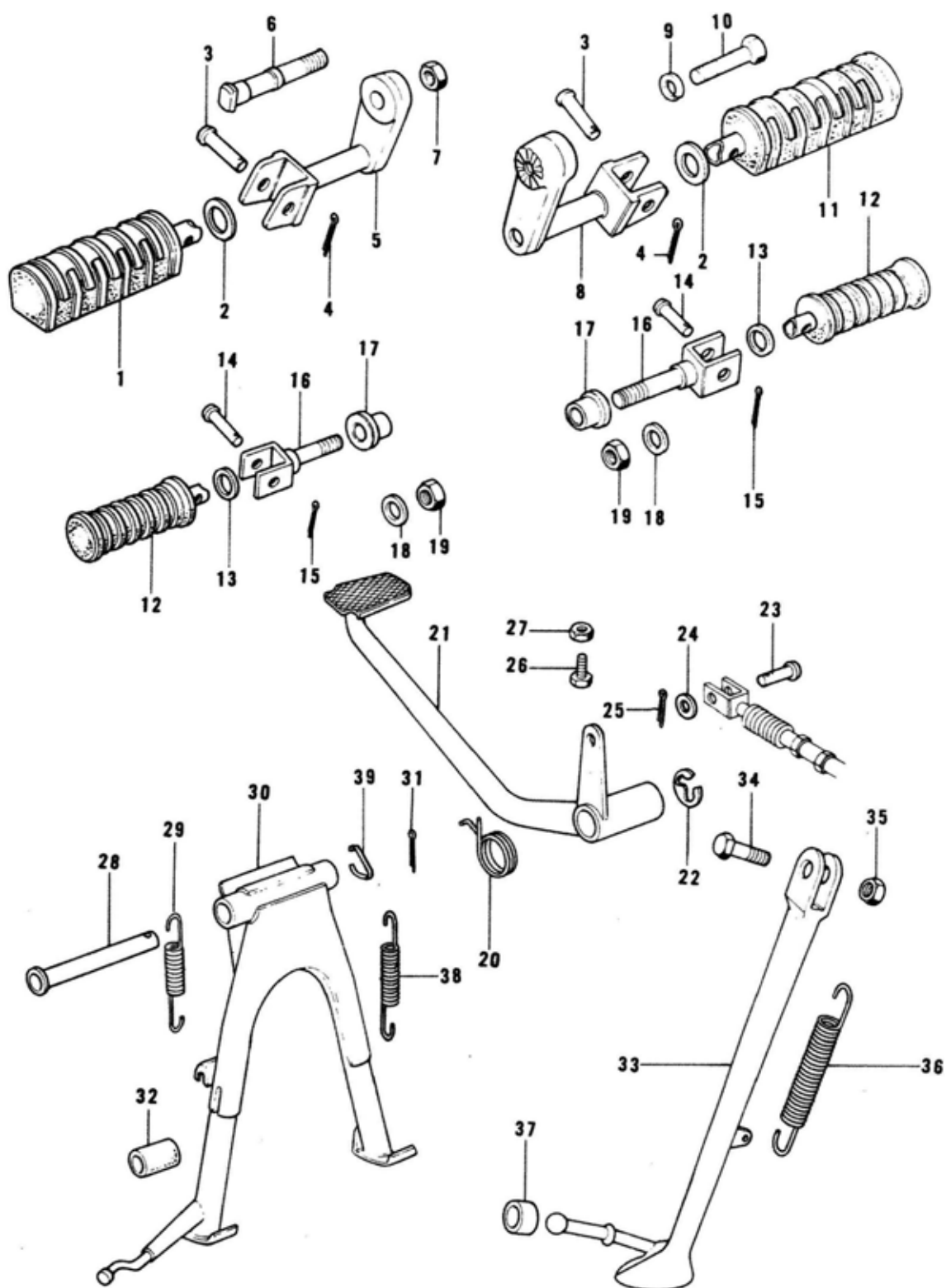
15. Footrests, Stands, Brake Pedal (1/2)



15. Footrests, Stands, Brake Pedal (1/2)

Ref. No.	Part No.	Part Name	Quantity					Remarks	
			ENGLAND	FRANCE	W. GERMANY	ITALY	SWEDEN		OTHERS
1	34028-011	BAR, footrest, L. H.	1	1	1	1	1	1	
2	92022-204	WASHER, plain	2	2	2	2	2	2	
3	92043-080	PIN, footrest bar fitting	2	2	2	2	2	2	
4	550D2516	PIN, cotter, 2.5 x 16	2	2	2	2	2	2	
5	34003-040	HOLDER, footrest bar, L. H.	1	1	1	1	1	1	
6	92003-076	BOLT, L. H. footrest fitting	1	1	1	1	1	1	
7	315B1200A	NUT, 12 m/m	1	1	1	1	1	1	
8	34003-041	HOLDER, footrest bar, R. H.	1	1	1	1	1	1	
9	461F1200	WASHER, spring, 12 m/m	1	1	1	1	1	1	
10	92007-025	BOLT, R. H. footrest fitting	1	1	1	1	1	1	
11	34028-012	BAR, footrest, R. H.	1	1	1	1	1	1	
12	92076-027	RUBBER, rear footrest	2	2	2	2	2	2	
13	92022-199	WASHER, plain	2	2	2	2	2	2	
14	92043-079	PIN, rear footrest fitting	2	2	2	2	2	2	
15	550D2012	PIN, cotter, 2.0 x 12	2	2	2	2	2	2	
16	34029-011	BRACKET, rear footrest	2	2	2	2	2	2	
17	92092-010	BUSHING, rubber	4	4	4	4	4	4	
18	411B1000	WASHER, plain, 10 m/m	4	4	4	4	4	4	
19	92019-021	NUT, lock, 10 m/m	2	2	2	2	2	2	
20	43005-033	SPRING, brake pedal return	1	1	1	1	1	1	
21	43001-060	PEDAL, brake	1	1	1	1	1	1	
22	482K0200	CIRCLIP, 12 m/m	1	1	1	1	1	1	
23	92043-034	PIN, brake cable joint	1	1	1	1	1	1	
24	410B0600	WASHER, plain, 6 m/m	1	1	1	1	1	1	
25	550D2015	PIN, cotter, 2.0 x 15	1	1	1	1	1	1	
26	110B0622	BOLT, hex head, 6 x 22	1	1	1	1	1	1	
27	310B0600	NUT, 6 m/m	1	1	1	1	1	1	
28	34019-011	SHAFT, main stand	1	1	1	1	1	1	
29	34023-010	SPRING, main stand	1	1	1	1	1	1	
30	34011-035	STAND, main	1	1		1	1	1	
	34011-044	STAND, main			1				

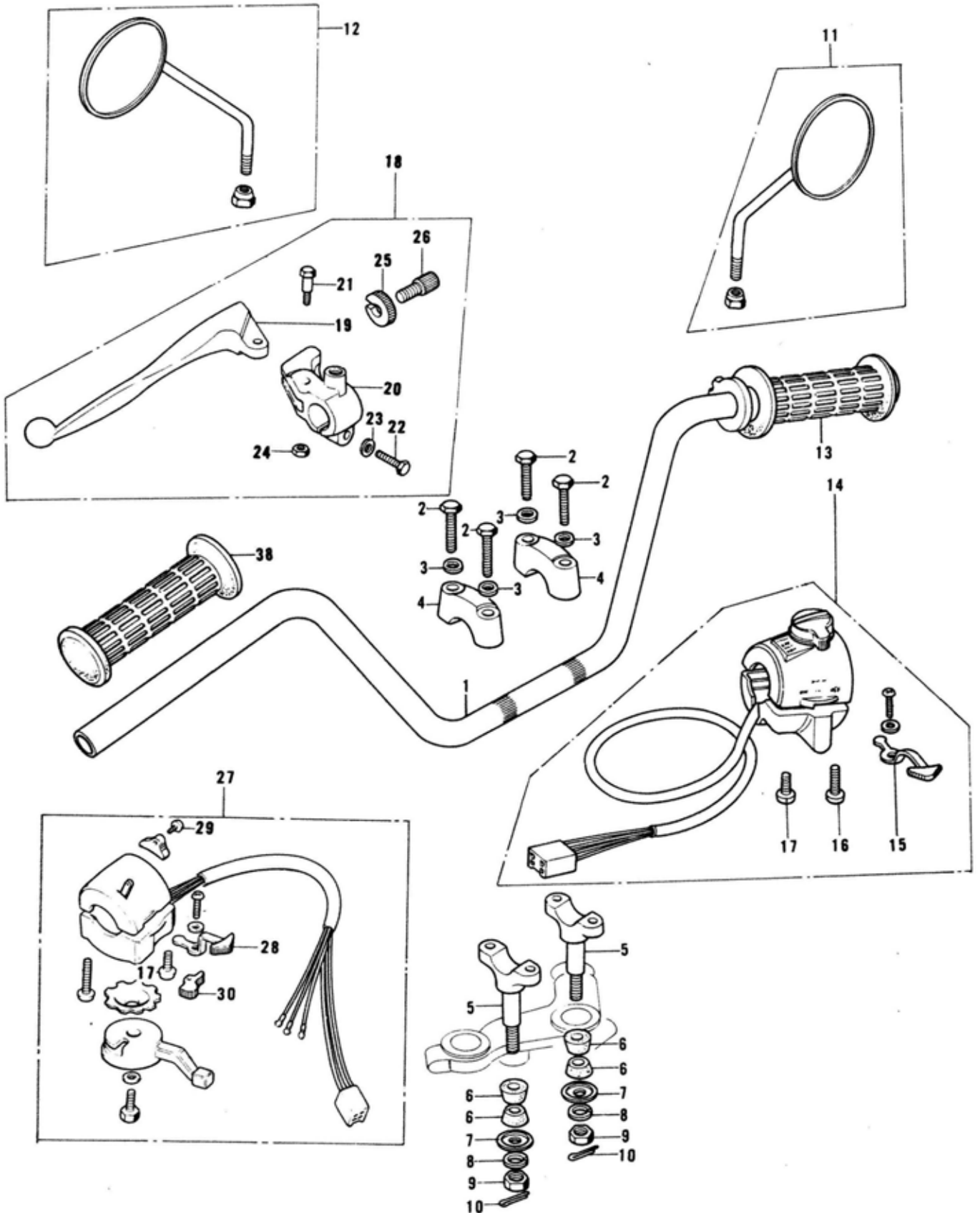
15. Footrest, Stands, Brake Pedal (2/2)



15. Footrest, Stands, Brake Pedal (2/2)

Ref. No.	Part No.	Part Name	Quantity					Remarks	
			ENGLAND	FRANCE	W. GERMANY	ITALY	SWEDEN		OTHERS
31	550D3025	PIN, cotter, 3.0 x 25	1		1	1	1	1	
32	92075-115	RUBBER, main stand stopper	1	1	1	1	1	1	
33	34024-051	STAND, side	1	1		1	1	1	
34	92003-079	BOLT, side stand, 10 m/m	1	1		1	1	1	
35	313B1000	NUT, 10 m/m	1	1		1	1	1	
36	34023-005	SPRING, side stand	1	1		1	1	1	
37	92075-031	RUBBER, side stand stopper	1	1		1	1	1	
38	34023-019	SPRING, main stand				1			
39	34022-022	HOOK				1			

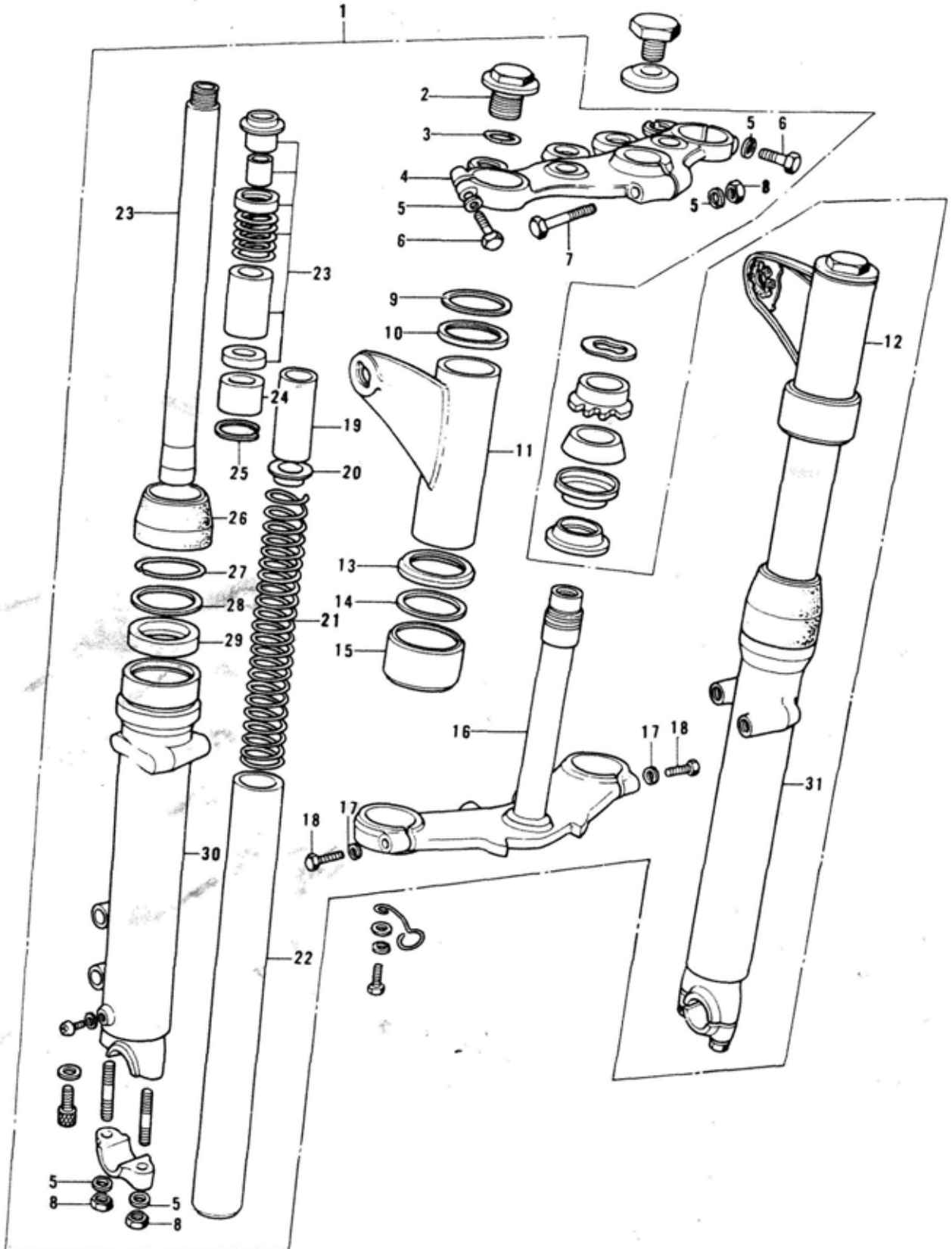
16. Handlebar, Grips



16. Handlebar, Grips

Ref. No.	Part No.	Part Name	Quantity					Remarks	
			ENGLAND	FRANCE	W. GERMANY	ITALY	SWEDEN		OTHERS
1	46006-011	HANDLEBAR, semi-low	1	1	1	1	1	1	
2	92007-002	BOLT, handlebar fitting	4	4	4	4	4	4	
3	461F0800	WASHER, spring, 8 m/m	4	4	4	4	4	4	
4	46012-008	HOLDER, handlebar	2	2	2	2	2	2	
5	46012-010	HOLDER, handlebar	2	2	2	2	2	2	
6	92075-039	DAMPER RUBBER, handlebar	4	4	4	4	4	4	
7	46016-003	CAP, handlebar holder	2	2	2	2	2	2	
8	461F1000	WASHER, spring, 10 m/m	2	2	2	2	2	2	
9	313B1000	NUT, 10 m/m	2	2	2	2	2	2	
10	92041-005	PIN, cotter, 2.5 x 20	2	2	2	2	2	2	
11	56002-029	REAR VIEW MIRROR, R. H.	1				1	1	
	56002-022	REAR VIEW MIRROR, R. H.		1	1		1		
12	56003-014	REAR VIEW MIRROR, L. H.		1	1		1		
	56003-019	REAR VIEW MIRROR, L. H.	1				1	1	
13	46019-041	GRIP ASSY, throttle	1	1	1	1	1	1	
14	46132-029	CASE ASSY, R. H.	1	1	1	1	1	1	
15	46043-006	KNOB, lighting switch, R. H.	1	1	1	1	1	1	
16	220B0535A	SCREW, pan head, 5 x 35	1	1	1	1	1	1	
17	220B0522A	SCREW, pan head, 5 x 22	2	2	2	2	2	2	
18	46076-049	LEVER ASSY, clutch	1	1	1	1	1	1	
19	46092-022	LEVER, clutch	1	1	1	1	1	1	
20	46094-017	HOLDER, clutch lever	1	1	1	1	1	1	
21	92007-047	BOLT, clutch lever fitting	1	1	1	1	1	1	
22	110N0625	BOLT, hex head, 6 x 25	1	1	1	1	1	1	
23	410B0600	WASHER, plain, 6 m/m	2	2	2	2	2	2	
24	92017-014	NUT, lock, 8 m/m	1	1	1	1	1	1	
25	46056-007	NUT, cable adjuster lock	2	2	2	2	2	2	O.D. = 30
26	46055-003	SCREW, cable adjuster	2	2	2	2	2	2	
27	46091-033	CASE ASSY, L. H. grip	1	1	1	1	1	1	
28	46043-005	KNOB, signal lamp switch, L. H.	1	1	1	1	1	1	
29	221B0308A	SCREW, countersunk head, 3 x 8	1	1	1	1	1	1	
30	46027-015	SWITCH ASSY, L. H. push button	1	1	1	1	1	1	

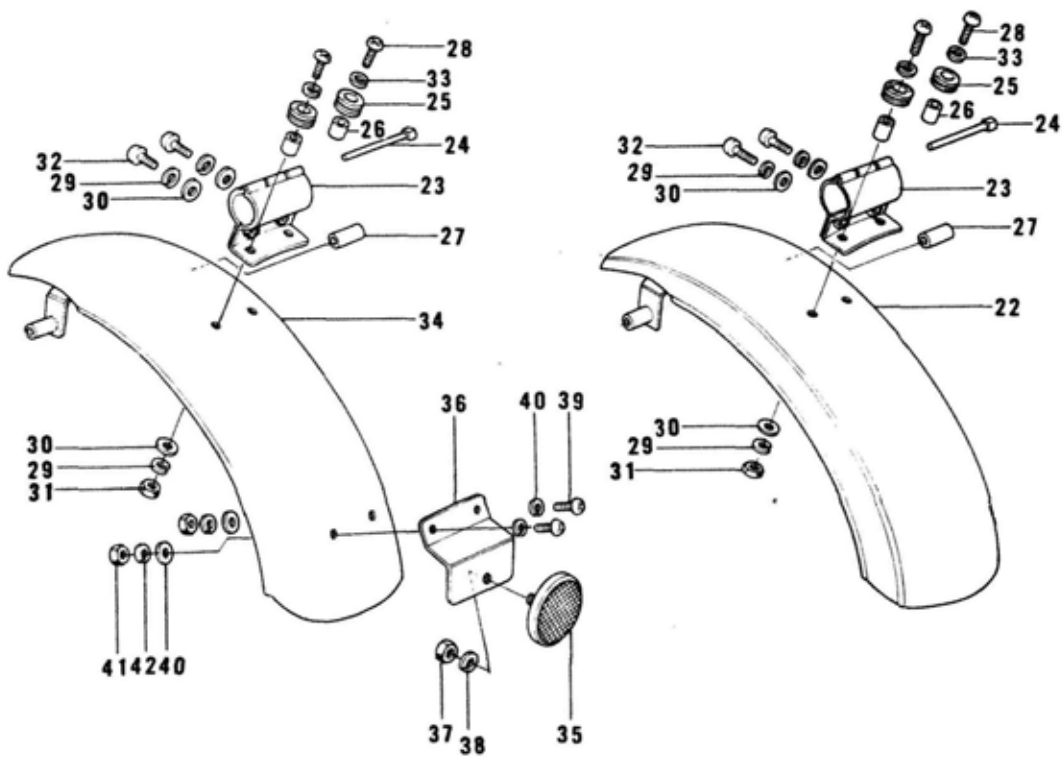
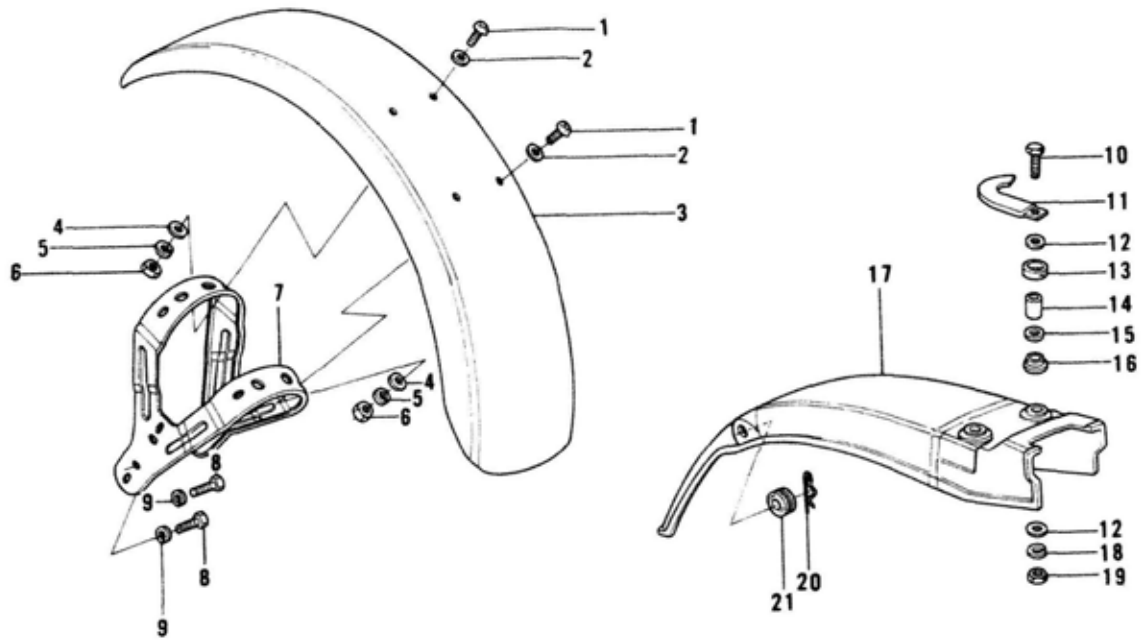
17. Front Fork



17. Front Fork

Ref. No.	Part No.	Part Name	Quantity					Remarks
			ENGLAND	FRANCE	W. GERMANY	ITALY	SWEDEN	
1	44001-177	FRONT FORK ASSY	1	1		1	1	
	44001-186	FRONT FORK ASSY			1		1	
2	44041-037	BOLT, fork top	2	2	2	2	2	2
3	44046-017	"O" RING, fork top	2	2	2	2	2	2
4	44039-051	HEAD, steering stem	1	1	1	1	1	1
5	461F0800	WASHER, spring, 8 m/m	7	7	7	7	7	7
6	44041-044	BOLT, hex head, 8 x 30	2	2	2	2	2	2
7	44041-042	BOLT, hex head, 8 m/m	1	1	1	1	1	1
8	92019-022	NUT, lock, 8 m/m	5	5	5	5	5	5
9	44045-039	GASKET, fork cover	2	2	2	2	2	2
10	44043-047	GUIDE, fork cover	2	2	2	2	2	2
11	44033-067	COVER, L. H. fork	1	1	1	1	1	1
12	44034-067	COVER, R. H. fork	1	1	1	1	1	1
13	44032-005	GUIDE, fork cover	2	2	2	2	2	2
14	44045-029	GASKET, fork cover	2	2	2	2	2	2
15	44064-015	GUIDE, fork cover	2	2	2	2	2	2
16	44037-097	STEM, steering	1	1		1		1
	44037-102	STEM, steering			1		1	
17	461F1000	WASHER, spring, 10 m/m	2	2	2	2	2	2
18	44041-010	BOLT, hex head, 10 x 32	2	2	2	2	2	2
19	44028-026	SPACER, fork spring guide	2	2	2	2	2	2
20	44029-019	GUIDE, fork spring	2	2	2	2	2	2
21	44026-043	SPRING, fork	2	2	2	2	2	2
22	44013-038	TUBE, fork inner	2	2	2	2	2	2
23	44022-034	CYLINDER, fork	2	2	2	2	2	2
24	44018-009	PISTON, fork	2	2	2	2	2	2
25	44044-019	CIRCLIP, fork piston	2	2	2	2	2	2
26	44010-035	DUST SHIELD	2	2	2	2	2	2
27	44044-005	CIRCLIP	2	2	2	2	2	2
28	44043-023	WASHER, plain	2	2	2	2	2	2
29	44009-026	OIL SEAL	2	2	2	2	2	2
30	44005-061	TUBE, L. H. fork outer	1	1	1	1	1	1
31	44006-059	TUBE, R. H. fork outer	1	1	1	1	1	1

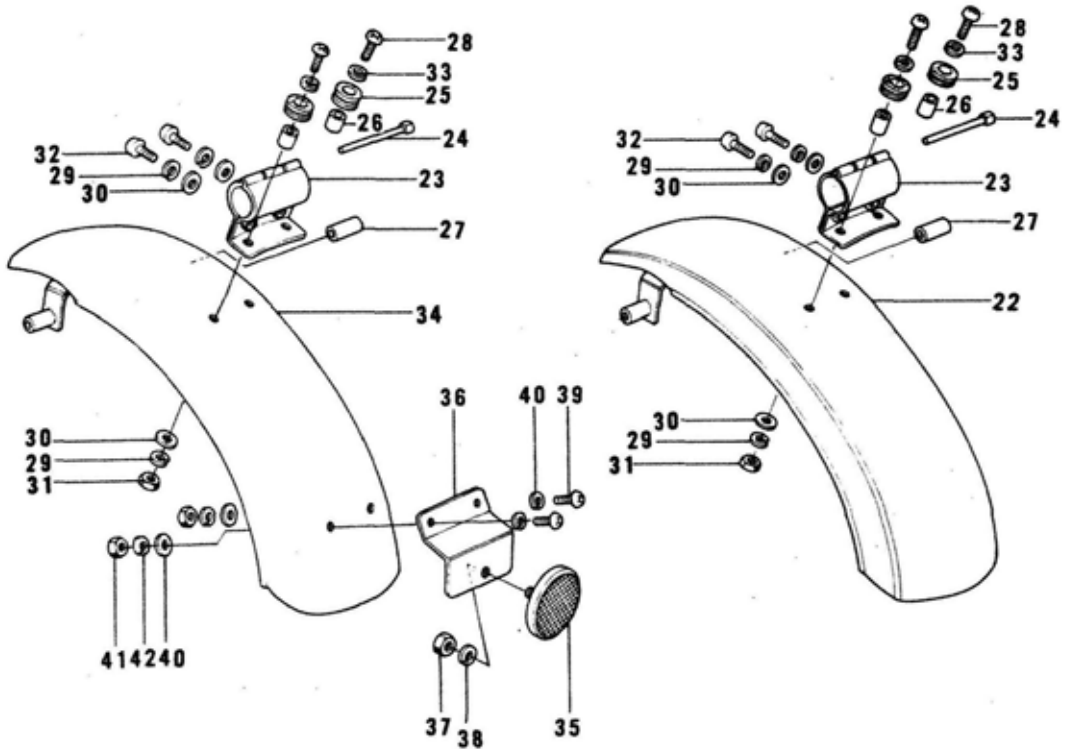
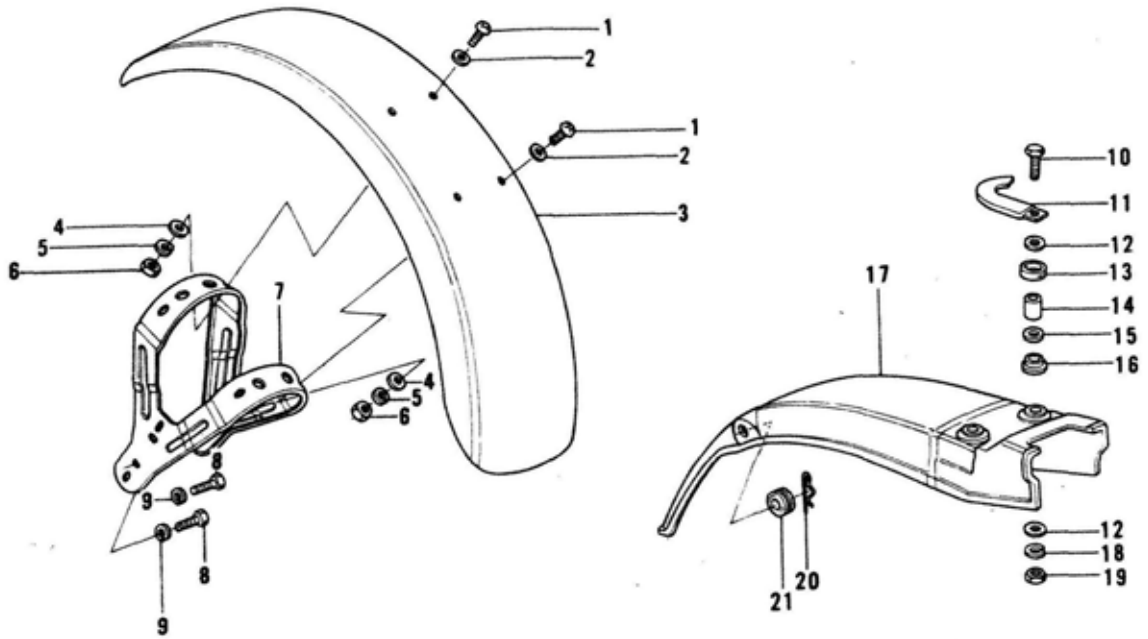
18. Fenders (1/2)



18. Fenders (1/2)

Ref. No.	Part No.	Part Name	Quantity					Remarks	
			ENGLAND	FRANCE	W. GERMANY	ITALY	SWEDEN		OTHERS
1	220E0614	SCREW, pan head, 6 x 14	4	4	4	4	4	4	
2	92022-193	WASHER, plain, 6 m/m	4	4	4	4	4	4	
3	35004-084	FENDER, front	1	1	1	1	1	1	
4	411B0600	WASHER, plain, 6 m/m	4	4	4	4	4	4	
5	461F0600	WASHER, spring, 6 m/m	4	4	4	4	4	4	
6	310B0600	NUT, 6 m/m	4	4	4	4	4	4	
7	35009-028	BRACKET, front fender	1	1	1	1	1	1	
8	110B0816	BOLT, hex head, 8 x 16	4	4	4	4	4	4	
9	461F0800	WASHER, spring, 8 m/m	4	4	4	4	4	4	
10	110B0636	BOLT, hex head, 6 x 36	2	2	2	2	2	2	
11	92037-113	CLAMP, wire harness	2	2	2	2	2	2	
12	92022-228	WASHER, plain	4	4	4	4	4	4	
13	92075-121	DAMPER RUBBER	2	2	2	2	2	2	
14	92027-241	COLLAR	2	2	2	2	2	2	
15	92022-227	WASHER, plain	2	2	2	2	2	2	
16	92075-133	DAMPER RUBBER	2	2	2	2	2	2	
17	35022-099	FENDER, rear	1	1	1	1	1	1	
18	461F0600	WASHER, spring, 6 m/m	2	2	2	2	2	2	
19	310B0600	NUT, 6 m/m	2	2	2	2	2	2	
20	92041-003	PIN, cotter	2	2	2	2	2	2	
21	92075-105	DAMPER RUBBER	2	2	2	2	2	2	
22	35022-145	FENDER, rear	1			1		1	
23	35025-024	BRACKET, rear fender	1	1	1	1	1	1	
24	32111-003	PIN	1	1	1	1	1	1	
25	92075-076	DAMPER RUBBER	2	2	2	2	2	2	
26	92027-129	COLLAR	2	2	2	2	2	2	L = 8.5 m/m
27	92027-259	COLLAR	1	1	1	1	1	1	L = 26 m/m
28	220E0620	SCREW, pan head, 6 x 20	2	2	2	2	2	2	
29	461F0600	WASHER, spring, 6 m/m	4	4	4	4	4	4	
30	411B0600	WASHER, plain, 6 m/m	4	4	4	4	4	4	
31	310B0600	NUT, 6 m/m	2	2	2	2	2	2	
32	110B0616	BOLT, hex head, 6 x 16	2	2	2	2	2	2	
33	92022-125	WASHER, plain, 6 m/m	2	2	2	2	2	2	
34	35022-146	FENDER, rear		1	1		1		
35	28012-015	REFLECTOR, rear reflex		1	1		1		

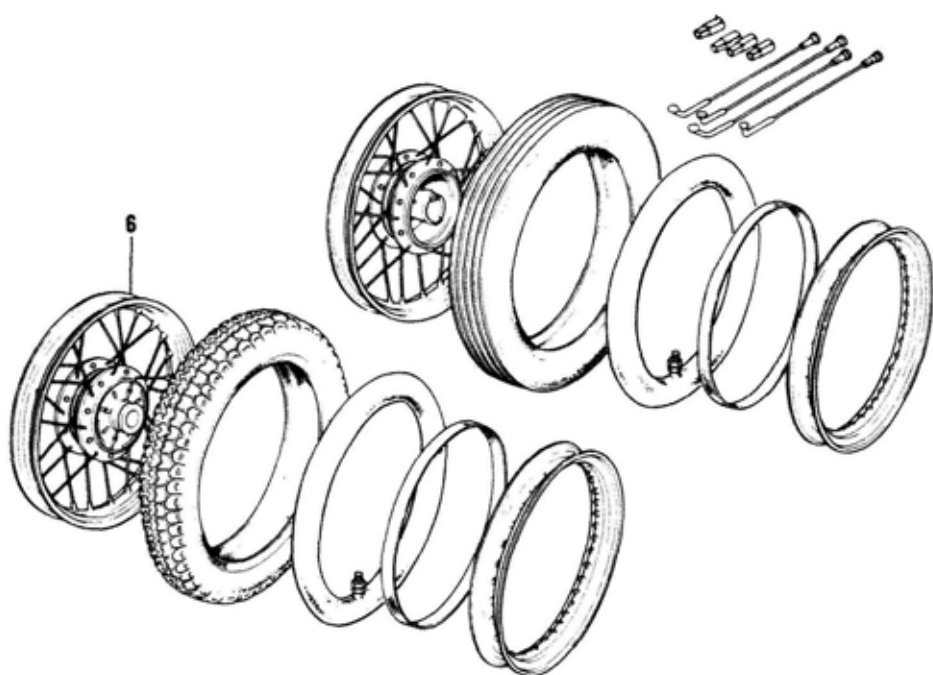
18./ Fenders (2/2)



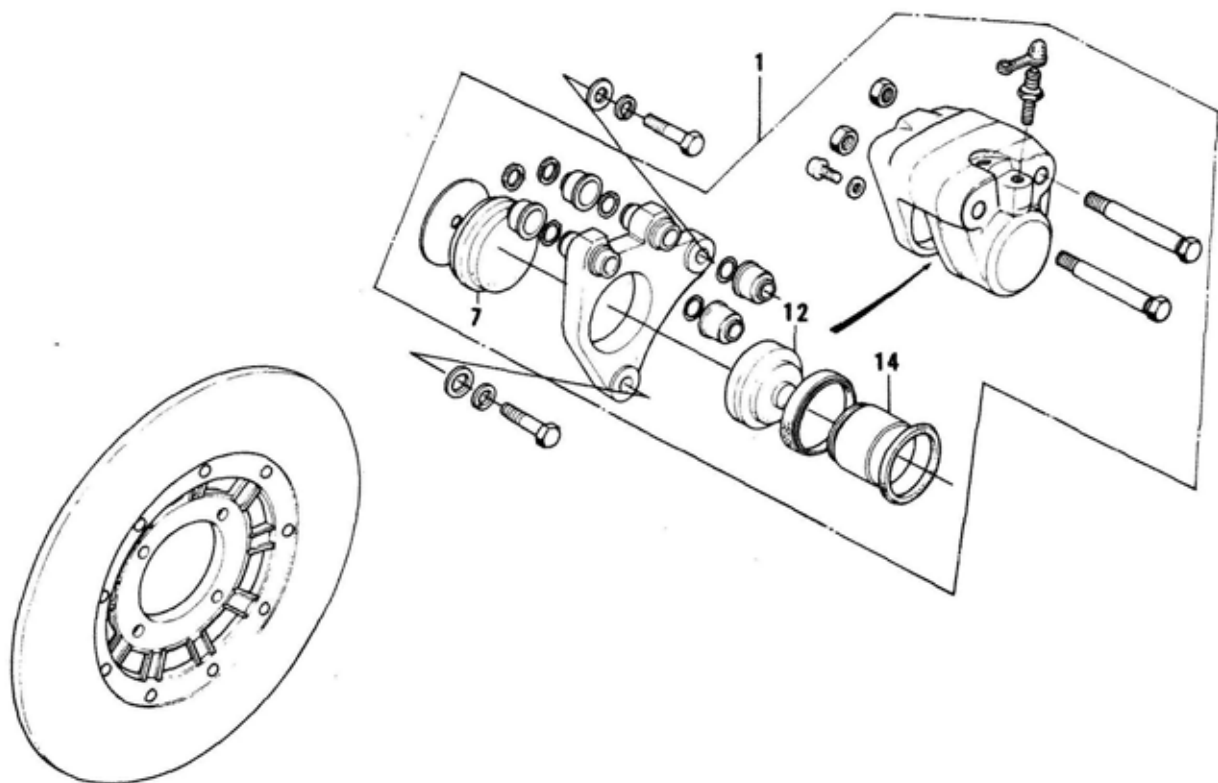
18. Fenders (2/2)

Ref. No.	Part No.	Part Name	Quantity					Remarks
			ENGLAND	FRANCE	W. GERMANY	ITALY	SWEDEN	
36	28013-008	BRACKET, reflex reflector		1	1		1	
37	310B0500A	NUT, 5 m/m		1	1		1	
38	461F0500	WASHER, spring, 5 m/m		1	1		1	
39	220B0614	SCREW, pan head, 6 x 14		2	2		2	
40	411B0600	WASHER, plain, 6 m/m		4	4		4	
41	310B0600	NUT, 6 m/m		2	2		2	
42	461F0600	WASHER, spring, 6 m/m		2	2		2	

19. Wheels



21. Disc Brake Equipment B



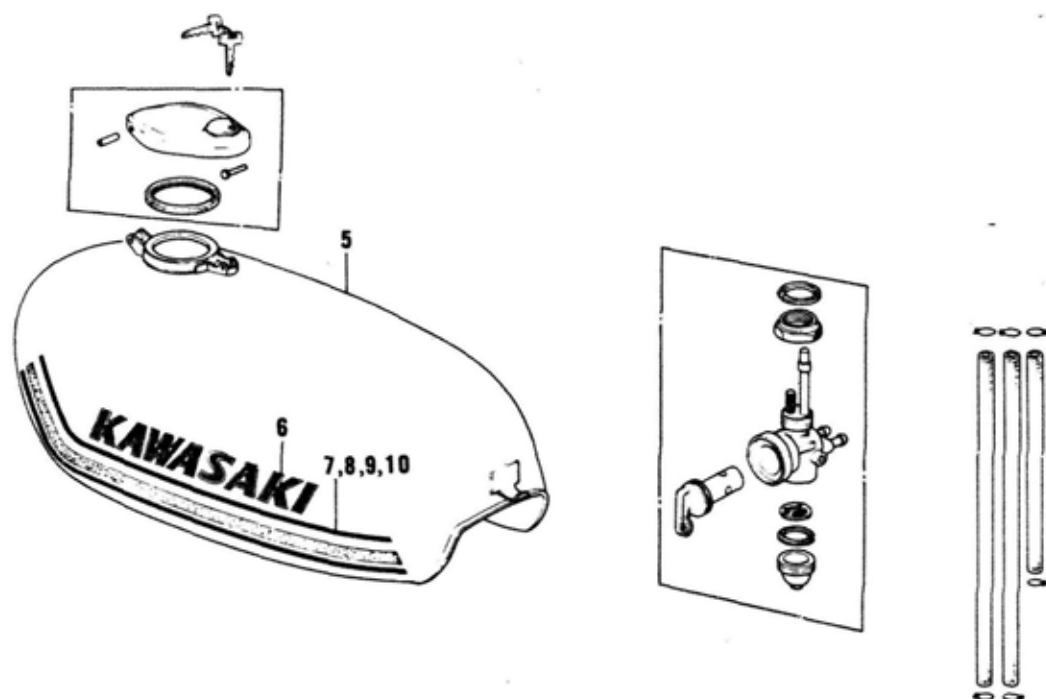
19. Wheels

Ref. No.	Part No.	Part Name	Quantity	Remarks
6	42048-031	WHEEL ASSY, rear	1	

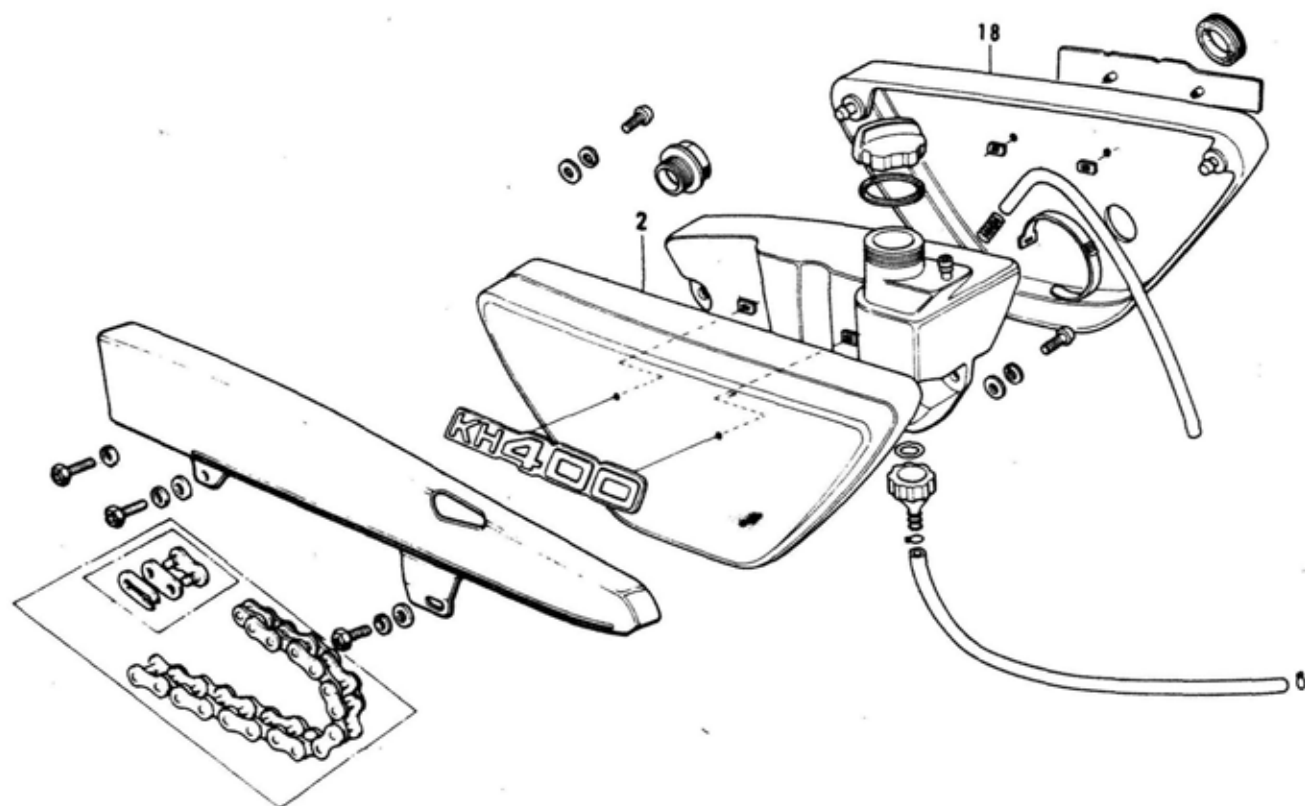
21. Disc Brake Equipment B

Ref. No.	Part No.	Part Name	Quantity	Remarks
1	43041-030	CALIPER ASSY	1	
7	43051-011	PAD B	1	Black
12	43050-011	PAD A	1	Black
14	43048-009	PISTON	1	

24. Fuel Tank



25. Oil Tank, Side Cover, Chain Cover



24. Fuel Tank

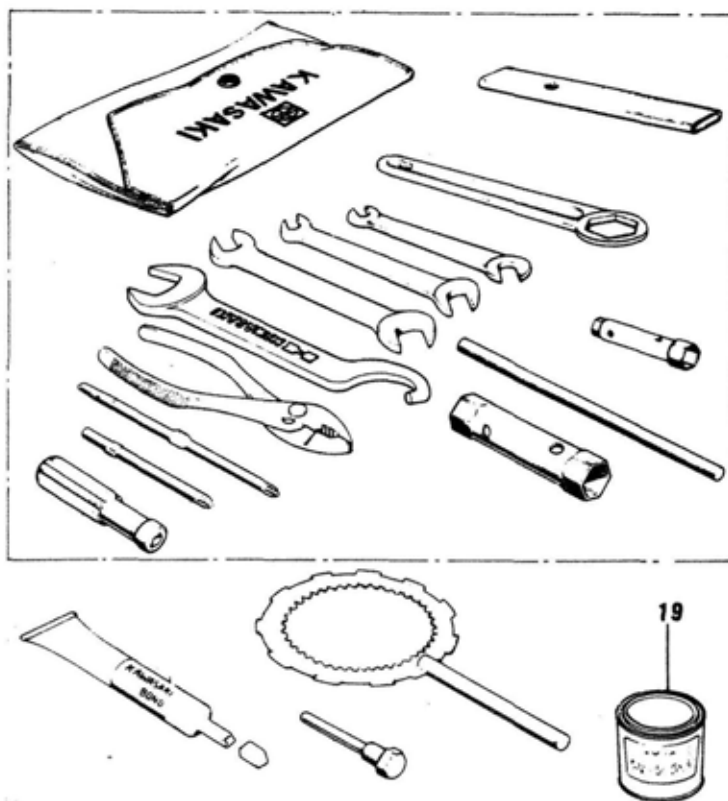
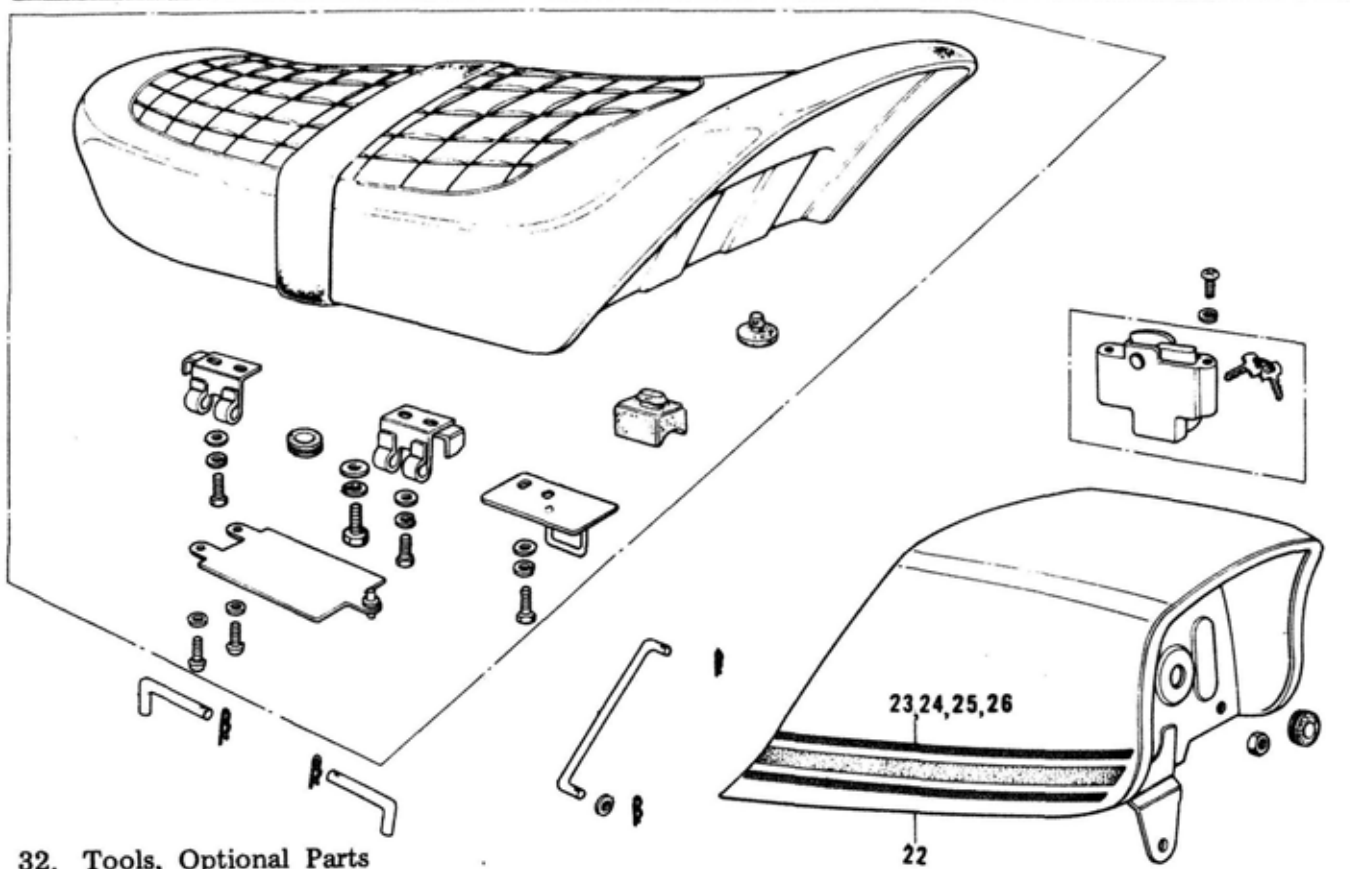
Ref. No.	Part No.	Part Name	Quantity	Remarks
5	51001-110-4U	TANK, fuel, Candy Emerald Green	1	
	51001-110-4Y	TANK, fuel, Candy Royal Purple	1	
6	*56014-069-SP	DECAL, fuel tank	2	
7	*56029-152-SP	DECAL, fuel tank stripe, L. H.	1	} Use for Candy Emerald Green Color
8	*56029-153-SP	DECAL, fuel tank stripe, R. H.	1	
9	*56029-130-SP	DECAL, fuel tank stripe, L. H.	1	} Use for Candy Royal Purple Color
10	*56029-131-SP	DECAL, fuel tank stripe, R. H.	1	

* Special Solution is required for these transfer type marks.

25. Oil Tank, Side Cover, Chain Cover

Ref. No.	Part No.	Part Name	Quantity	Remarks
2	36001-043-4U	COVER, L. H. side, Candy Emerald Green	1	
	36001-043-4Y	COVER, L. H. side, Candy Royal Purple	1	
18	36007-037-4U	COVER, R. H. side, Candy Emerald Green	1	
	36007-037-4Y	COVER, R. H. side, Candy Royal Purple	1	

26. Dual Seat



26. Dual Seat

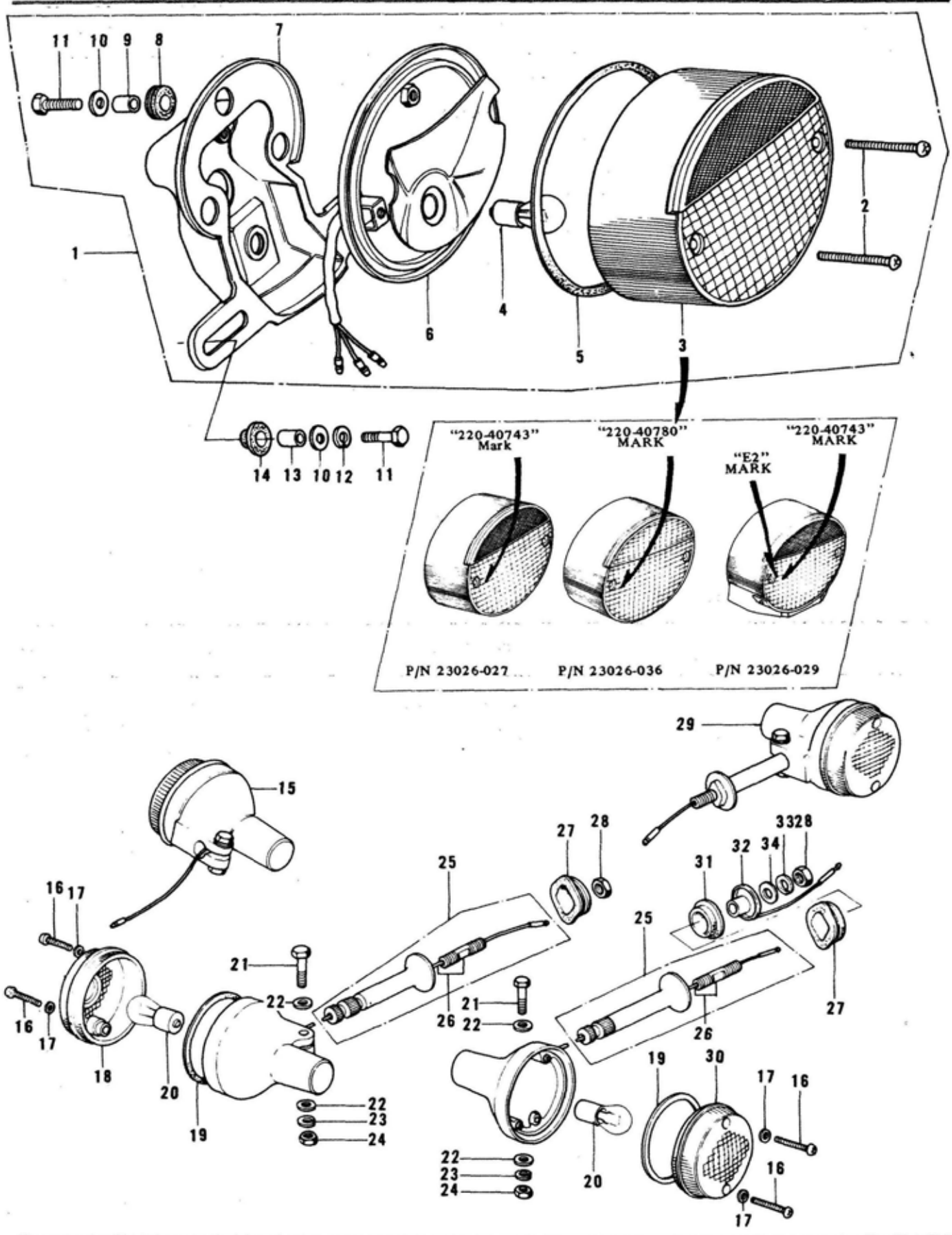
Ref. No.	Part No.	Part Name	Quantity	Remarks
22	53043-008-4U	BACK REST, Candy Emerald Green	1	
	53043-008-4Y	BACK REST, Candy Royal Purple	1	
23	*56029-154-SP	DECAL, back rest, L. H.	1	} Use for Candy Emerald Green Color
24	*56029-155-SP	DECAL, back rest, R. H.	1	
25	*56029-132-SP	DECAL, back rest, L. H.	1	} Use for Candy Royal Purple Color
26	*56029-133-SP	DECAL, back rest, R. H.	1	

* Special Solution is required for these transfer type marks.

32. Tools, Optional Parts

Ref. No.	Part No.	Part Name	Quantity	Remarks
19	56019-108-4U	PAINT, Candy Emerald Green	(1)	} Option 1/12 L
	56019-108-4Y	PAINT, Candy Royal Purple	(1)	

30. Electrical Equipment C



30. Electrical Equipment C

Ref. No.	Part No.	Part Name	Quantity					Remarks	
			ENGLAND	FRANCE	W. GERMANY	ITALY	SWEDEN		OTHERS
1	23024-030-21	LAMP ASSY, tail	1	1				1	Flat Black
	23024-071-21	LAMP ASSY, tail			1			1	Flat Black
	23024-054-21	LAMP ASSY, tail				1			Flat Black
2	220E0435A	SCREW, pan head, 4 x 35	2	2	2	2	2	2	
3	23026-027	LENS, tail lamp	1	1				1	
	23026-036	LENS, tail lamp			1			1	
	23026-029	LENS, tail lamp				1			
4		BULB, 12V-21/5W	1	1	1	1	1	1	Local Procurement Item
5	23028-018	GASKET, tail lamp lens	1	1	1	1	1	1	
6	23027-036	CASE, tail lamp	1	1	1	1	1	1	
7	23036-027-21	BRACKET, license plate	1	1	1	1	1	1	Flat Black
8	92075-076	DAMPER RUBBER	3	3	3	3	3	3	
9	92027-129	COLLAR	3	3	3	3	3	3	L = 8.5 m/m
10	92022-125	WASHER, plain, 6 m/m	6	6	6	6	6	6	
11	110B0622	BOLT, hex head, 6 x 22	6	6	6	6	6	6	
12	461F0600	WASHER, spring, 6 m/m	3	3	3	3	3	3	
13	92027-120	COLLAR	3	3	3	3	3	3	L = 10.5 m/m
14	92075-112	DAMPER RUBBER	3	3	3	3	3	3	
15	23040-045	LAMP ASSY, front turn signal	2	2	2	2	2	2	
16	220E0420A	SCREW, pan head, 4 x 20	8	8	8	8	8	8	
17	23058-002	WASHER, plain, 4 m/m	8	8	8	8	8	8	
18	23048-013	LENS, front turn signal lamp	2	2	2	2	2	2	"045-6588" MARK
19	23050-003	GASKET, turn signal lamp lens	4	4	4	4	4	4	
20		BULB, 12V-21W	4	4	4	4	4	4	Local Procurement Item
21	110N0630	BOLT, hex head, 6 x 30	4	4	4	4	4	4	
22	411D0600	WASHER, plain, 6 m/m	8	8	8	8	8	8	
23	461F0600	WASHER, spring, 6 m/m	4	4	4	4	4	4	
24	310B0600	NUT, 6 m/m	4	4	4	4	4	4	
25	23078-001	BRACKET, turn signal lamp	4	4	4	4	4	4	
26	23073-001	BOLT SET, signal lamp bracket	4	4	4	4	4	4	
27	92075-128	DAMPER RUBBER	4	4	4	4	4	4	
28	315B1000	NUT, 10 m/m	4	4	4	4	4	4	
29	23040-046	LAMP ASSY, rear turn signal	2	2	2	2	2	2	
30	23048-016	LENS, rear turn signal lamp	2	2	2	2	2	2	"045-6680" MARK
31	92075-158	DAMPER RUBBER	2	2	2	2	2	2	
32	23076-003	COLLAR SET	2	2	2	2	2	2	
33	461F1000	WASHER, spring, 10 m/m	2	2	2	2	2	2	
34	411B1000	WASHER, plain, 10 m/m	2	2	2	2	2	2	

Numerical Parts Index

* : Indicates the Newly developed parts for Kawasaki Model KH400-A4.

Part No.	Page	Q'ty	Part No.	Page	Q'ty
11080612	4	1	27008-055-05	4	1
11080616	14	2	27008-055-06	4	1
11080622	24	6	27008-055-07	4	1
11080622	4	4	27008-055-08	4	1
11080622	6	1	27008-055-09	4	1
11080636	14	2	27008-055-10	4	1
11080816	14	4	27016-038	4	1
11080825	2	1	27031-005	4	1
11080850	4	4	27032-001	4	1
110N0625	10	1	28012-015	14	1
110N0630	24	4	28013-038	16	1
113810110	4	2	31080500A	16	1
13156-040	2	1	31080600	16	2
13157-004	2	1	31080600	14	2
13158-007	2	1	31080600	14	4
13159-007	2	1	31080600	14	2
13159-008	2	1	31080600	4	2
13161-036	2	1	31080600	6	1
13169-007	2	1	31080600	24	4
13170-005	2	1	31280800	2	1
13171-004	2	1	31381000	10	2
13236-002	2	1	31381000	8	1
22080522A	10	2	31581000	24	4
22080535A	10	1	31581200A	6	1
22080614	16	2	318N0800	2	1
220F0420A	24	8	32002-133	4	1
220F0435A	24	2	32097-037	4	1
220F0614	14	4	32103-006	4	1
220F0620	14	2	32111-003	14	1
22180308A	10	1	34003-040	6	1
22180616	2	2	34003-041	6	1
23024-030-21	24	1	34011-035	6	1
23024-054-21	24	1	34011-044	6	1
23024-071-21	24	1	34019-011	6	1
23026-027	24	1	34022-022	8	1
23026-029	24	1	34023-005	8	1
23026-036	24	1	34023-010	6	1
23027-036	24	1	34023-019	8	1
23028-018	24	1	34024-051	8	1
23036-027-21	24	1	34028-011	6	1
23040-045	24	2	34028-012	6	1
23040-046	24	2	34029-011	6	2
23048-013	24	2	35004-084	14	1
23048-016	24	2	35009-028	14	1
23050-003	24	4	35022-099	14	1
23058-002	24	8	35022-145	14	1
23073-001	24	4	35022-146	14	1
23076-003	24	2	35025-024	14	1
23078-001	24	4	* 36001-043-4U	20	1
27008-055-01	4	1	* 36001-043-4Y	20	1
27008-055-02	4	1	* 36007-037-4U	20	1
27008-055-03	4	1	* 36007-037-4Y	20	1
27008-055-04	4	1	41080600	6	1

Numerical Parts Index

* : Indicates the Newly developed parts for Kawasaki Model KH400-A4.

Part No.	Page	Q'ty	Part No.	Page	Q'ty
410B0600	10	2	46056-007	10	2
411B0600	16	4	46076-049	10	1
411B0600	14	4	46091-033	10	1
411B0600	14	4	46092-022	10	1
411B1000	6	4	46094-017	10	1
411B1000	24	2	461F0500	16	1
411D0600	24	8	461F0600	14	4
42048-031	18	1	461F0600	16	2
43001-060	6	1	461F0600	24	3
43005-033	6	1	461F0600	14	4
43041-030	18	1	461F0600	14	2
43048-009	18	1	461F0600	4	5
43050-011	18	1	461F0600	4	1
43051-011	18	1	461F0600	24	4
44001-177	12	1	461F0800	2	1
44001-186	12	1	461F0800	10	4
44005-061	12	1	461F0800	14	4
44006-059	12	1	461F0800	12	7
44009-026	12	2	461F1000	12	2
44010-035	12	2	461F1000	10	2
44013-038	12	2	461F1000	24	2
44018-009	12	2	461F1200	6	1
44022-034	12	2	46132-029	10	1
44026-043	12	2	482K0200	6	1
44028-026	12	2	482K5000	2	2
44029-019	12	2 *	51001-110-4U	20	1
44032-005	12	2 *	51001-110-4Y	20	1
44033-067	12	1 *	53043-008-4U	22	1
44034-067	12	1 *	53043-008-4Y	22	1
44037-097	12	1	55002012	6	2
44037-102	12	1	55002015	6	1
44039-051	12	1	55002516	6	2
44041-010	12	2	55003025	8	1
44041-037	12	2	56002-022	10	1
44041-042	12	1	56002-029	10	1
44041-044	12	2	56003-014	10	1
44043-023	12	2	56003-019	10	1
44043-047	12	2 *	56014-069-SP	20	2
44044-005	12	2 *	56019-108-4U	22	1
44044-019	12	2 *	56019-108-4Y	22	1
44045-029	12	2 *	56029-130-SP	20	1
44045-039	12	2 *	56029-131-SP	20	1
44046-017	12	2 *	56029-132-SP	22	1
44064-015	12	2 *	56029-133-SP	22	1
46006-011	10	1 *	56029-152-SP	20	1
46012-008	10	2 *	56029-153-SP	20	1
46012-010	10	2 *	56029-154-SP	22	1
46016-003	10	2 *	56029-155-SP	22	1
46019-041	10	1	600A0800	4	38
46027-015	10	1	92003-074	2	1
46043-005	10	1	92003-076	6	1
46043-006	10	1	92003-079	8	1
46055-003	10	2	92007-002	10	4

Numerical Parts Index

* : Indicates the Newly developed parts for Kawasaki Model KH400-A4.

Part No.	Page	Q'ty	Part No.	Page	Q'ty
92007-025	6	1	92097-003	4	1
92007-047	10	1			
92008-007	4	1			
92011-023	2	1			
92017-010	2	1			
92017-014	10	1			
92019-021	6	2			
92019-022	12	5			
92022-125	24	6			
92022-125	14	2			
92022-125	4	4			
92022-193	14	4			
92022-199	6	2			
92022-203	2	2			
92022-204	6	2			
92022-227	14	2			
92022-228	14	4			
92027-120	24	3			
92027-129	24	3			
92027-129	14	2			
92027-129	4	4			
92027-241	14	2			
92027-259	14	1			
92037-108	4	1			
92037-113	14	2			
92041-003	14	2			
92041-005	10	2			
92043-009	2	1			
92043-034	6	1			
92043-069	2	2			
92043-079	6	2			
92043-080	6	2			
92048-006	4	2			
92072-045	4	1			
92075-031	8	1			
92075-039	10	4			
92075-076	4	4			
92075-076	14	2			
92075-076	24	3			
92075-101	4	2			
92075-105	14	2			
92075-112	24	3			
92075-115	8	1			
92075-121	14	2			
92075-128	24	4			
92075-133	14	2			
92075-158	24	2			
92075-214	4	1			
92076-027	6	2			
92081-011	2	1			
92081-091	2	1			
92083-032	2	1			
92092-010	6	4			