

KAWASAKI

Model
250:S-1

Special Parts List

for General Market

31.Dec. 1971

KAWASAKI HEAVY INDUSTRIES, LTD.
Motorcycle Division
1-1.Kawasaki-Cho,Akashi,Hyogo Pref,Japan.
NO.99997-536©
PRINTED IN JAPAN

FOREWORD

This catalogue lists parts for the 250 S1.

It should be used in conjunction with the S2 PARTS CATALOGUE No.99997-513 (Rev. 1. July, 1971).

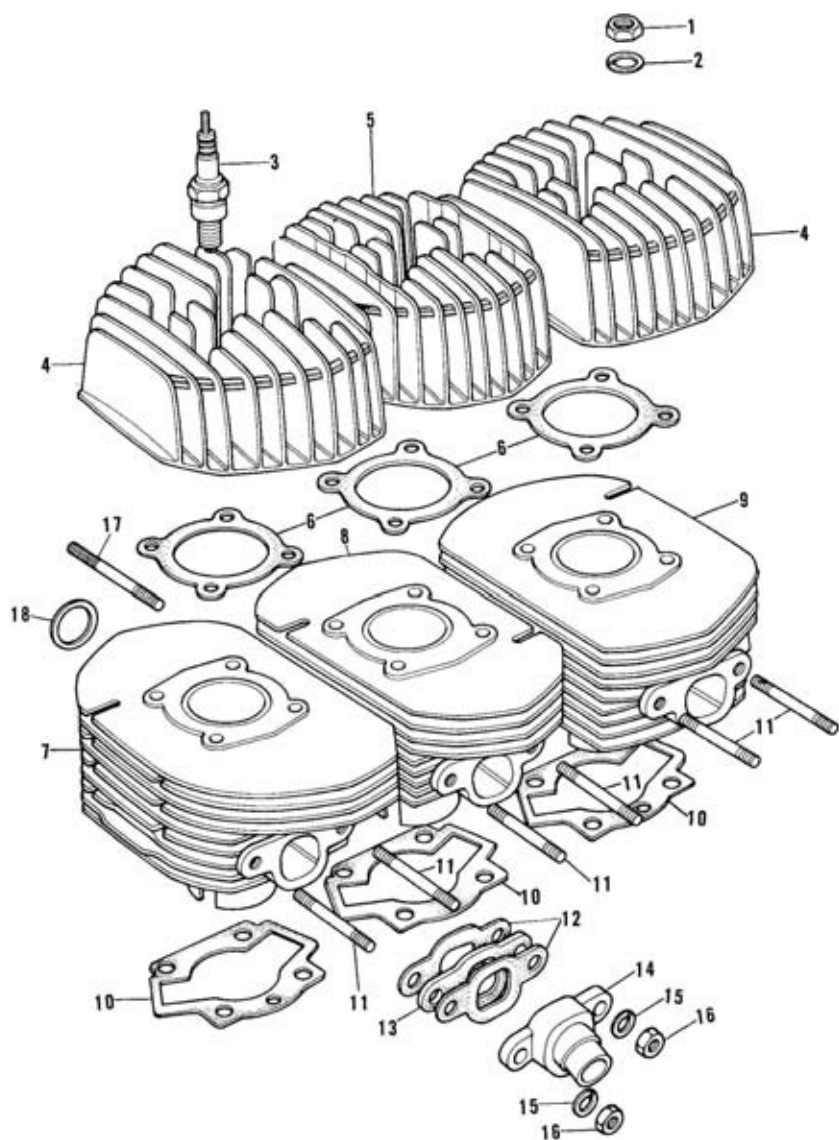
Any part numbers not listed in this supplement catalogue can be found in the S2 PARTS CATALOGUE No.99997-513.

KAWASAKI 250:S-1

INDEX

1.	Cylinder Head, Cylinder	1
3.	Piston, Crankshaft	3
4.	Clutch	5
5.	Transmission Gears	5
10.	Air Cleaner, Mufflers	7
11.	Carburetors	9
12.	Oil Pump	11
15.	Footrests, Stands, Brake Pedal	11
17.	Front Fork	13
18.	Fenders	13
19.	Tires, Rims	15
21.	Rear Hub	15
23.	Oil Tank, Side Cover, Chain Cover	17
24.	Dual Seat	17
	Numerical Parts Index (Part No. Sequence)	20
	Standard Hardware Index (Part No. Sequence)	22

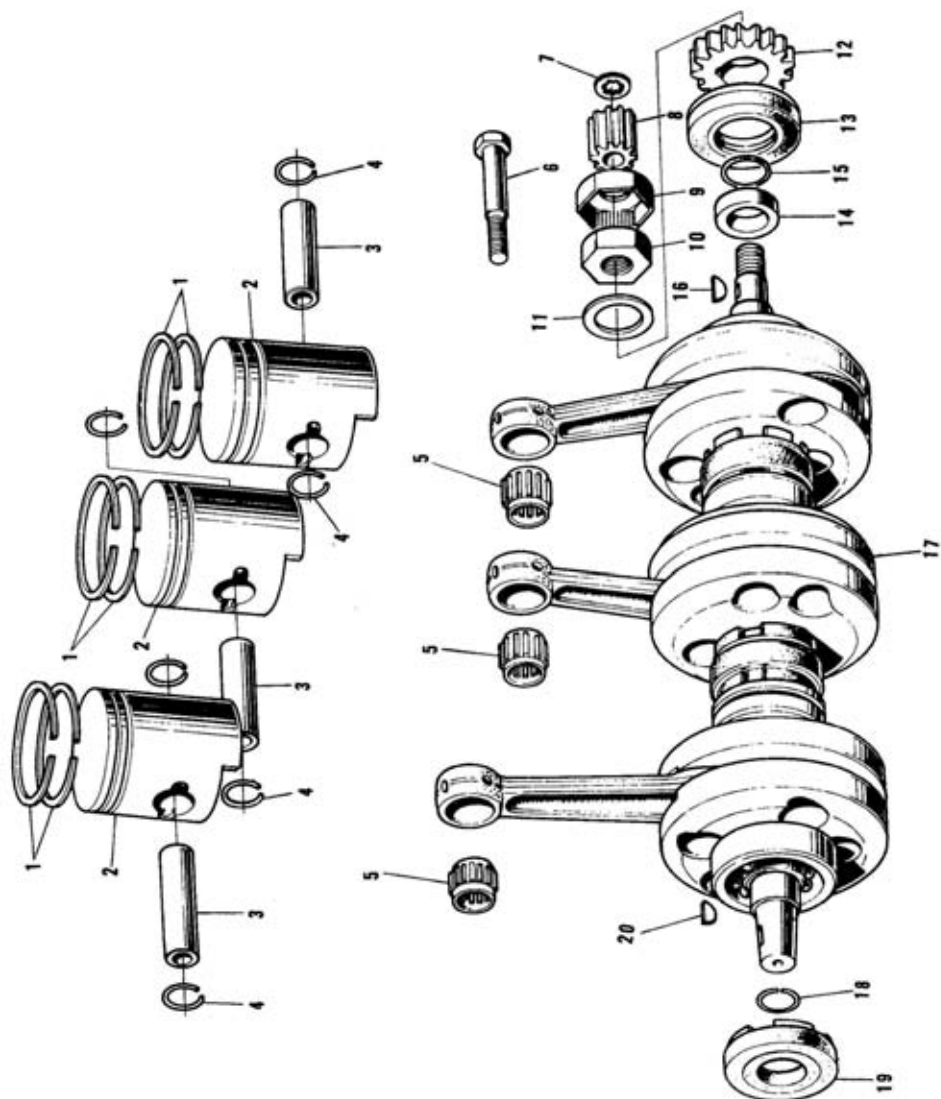
1. Cylinder Head, Cylinder



1. Cylinder Head, Cylinder

Ref. No.	Part No.	Part Name	Quantity	Remarks
1	316B0800	NUT, 8 m/m	12	
2	460E0800	WASHER—spring, 8 m/m	12	
3	92070-011	SPARK PLUG, NGK B-9HC	3	
4	11001-061	CYLINDER HEAD, L.H. & R.H.	2	
5	11001-062	CYLINDER HEAD, Center	1	
6	11004-047	GASKET—cylinder head	3	
7	11005-082	CYLINDER, L.H.	1	
8	11005-083	CYLINDER, Center	1	
9	11005-084	CYLINDER, R.H.	1	
10	11009-027	GASKET—cylinder base	3	
11	172G0820	STUD, 8 x 20	6	
12	16062-015	GASKET—air inlet	6	
13	16061-013	INSULATOR—heat	3	
14	16060-014	INLET PIPE	3	
15	460E0800	WASHER—spring, 8 m/m	6	
16	316B0800	NUT, 8 m/m	6	
17	172G0830	STUD, 8 x 30	6	
18	18067-003	GASKET—exhaust pipe	3	

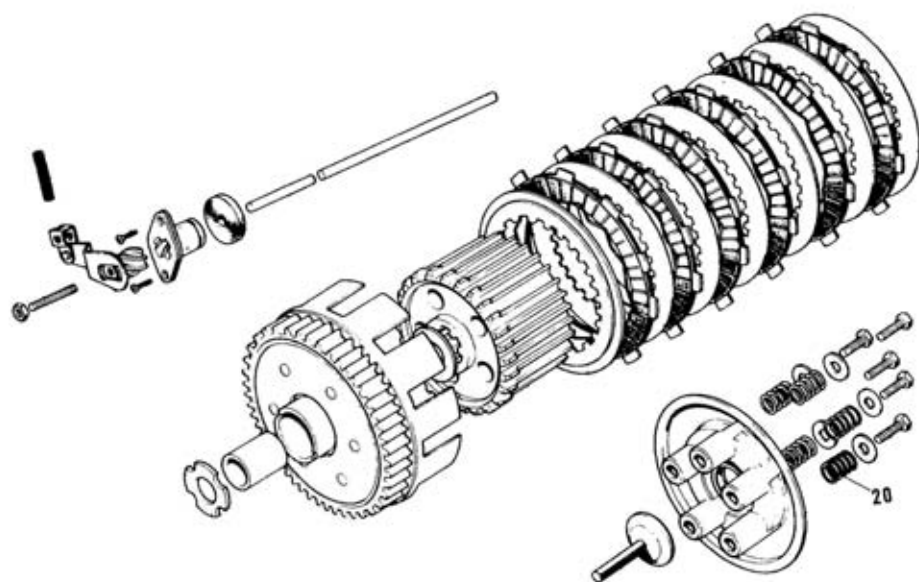
3. Piston, Crankshaft



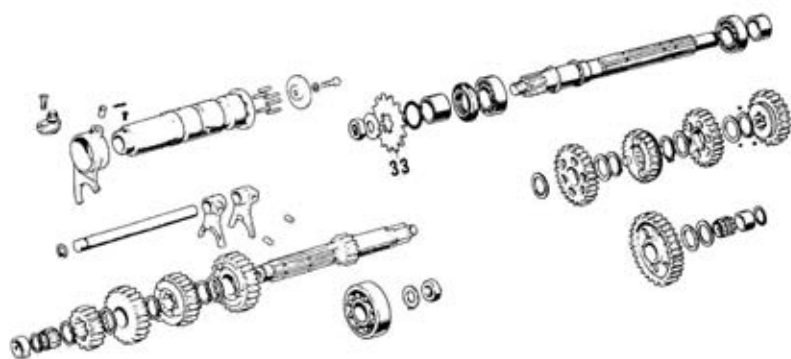
3. Piston, Crankshaft

Ref. No.	Part No.	Part Name	Quantity	Remarks
1	13008-033	RING SET—piston, STD	1 x 3	
	13024-041	RING SET—piston, 0.040" O/S		
	13025-038	RING SET—piston, 0.020" O/S		
2	13001-051	PISTON, STD	1 x 3	
	13027-051	PISTON, 0.040" O/S		
	13029-053	PISTON, 0.020" O/S		
3	13002-021	PIN—piston	1 x 3	
4	92036-005	CIRCLIP—piston pin	2 x 3	
5	13033-007	NEEDLE BEARING—small end	1 x 3	KTV151919
6	92003-068	BOLT—oil pump pinion	1	
7	463H0600	WASHER—lock, 6 m/m	1	
8	16084-014	PINION—oil pump	1	
9	92024-021	WASHER—lock	1	
10	92015-019	NUT, 18 m/m	1	
11	92024-006	WASHER—lock, 18 m/m	1	
12	13121-021	PINION—primary	1	
13	92050-023	OIL SEAL, TC326210	1	
14	92027-031	COLLAR—crankshaft	1	
15	92055-018	"O" RING, 18 m/m	1	
16	92038-015	WOODRUFF KEY	1	
17	13031-037	CRANKSHAFT & CONNECTING ROD ASSY	1	
18	92036-013	CIRCLIP	1	
19	92050-041	OIL SEAL, TCY256210	1	
20	92038-001	WOODRUFF KEY	1	

4. Clutch



5. Transmission Gears



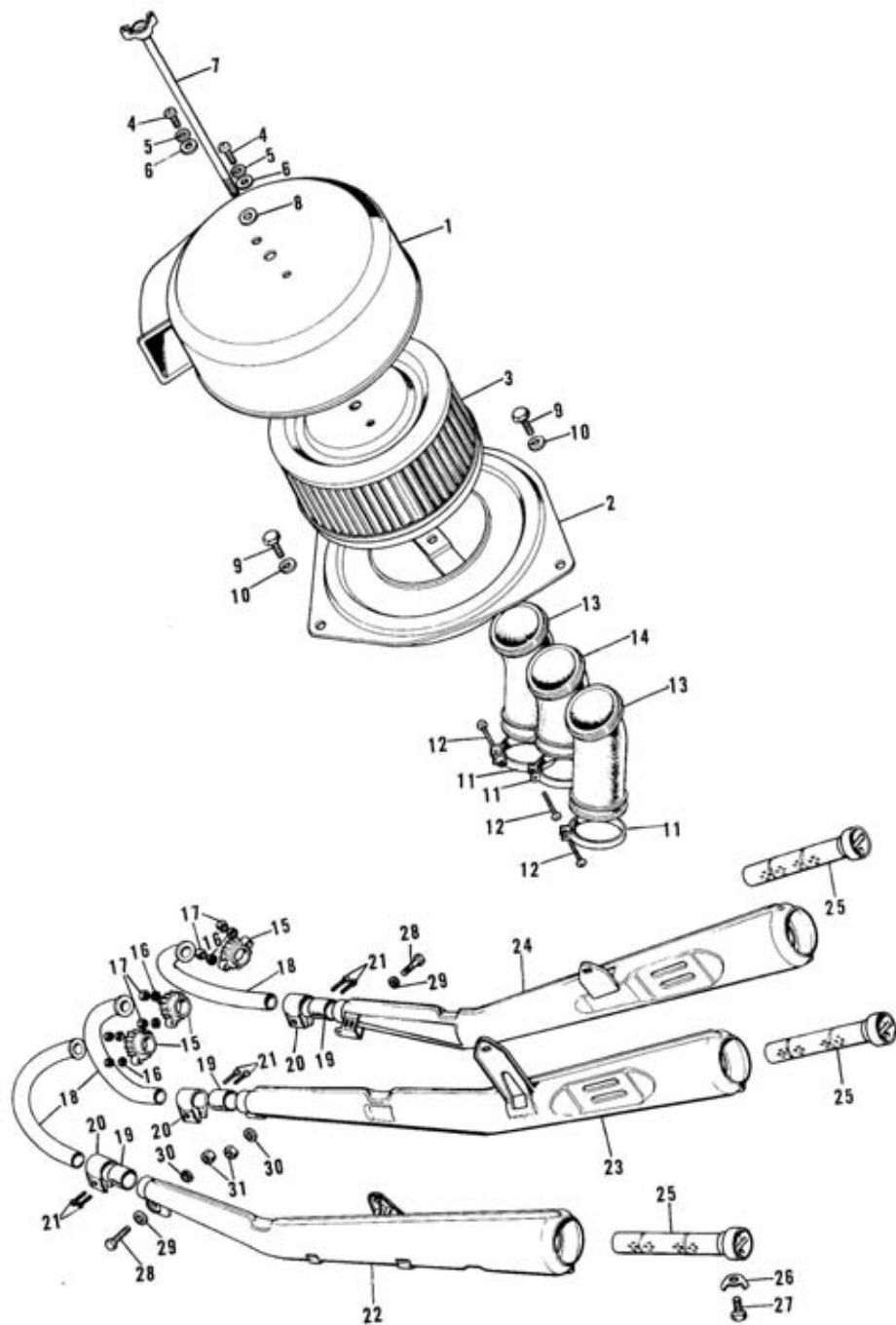
4. Clutch

Ref. No.	Part No.	Part Name	Quantity	Remarks
13 ~ 22	13081-044	CLUTCH ASSY	1	
20	92081-080	SPRING-clutch	5	

5. Transmission Gears

Ref. No.	Part No.	Part Name	Quantity	Remarks
33	13144-017	ENGINE SPROCKET, 14T	1	STD
	13144-025	ENGINE SPROCKET, 15T		} Option
	13144-018	ENGINE SPROCKET, 16T		

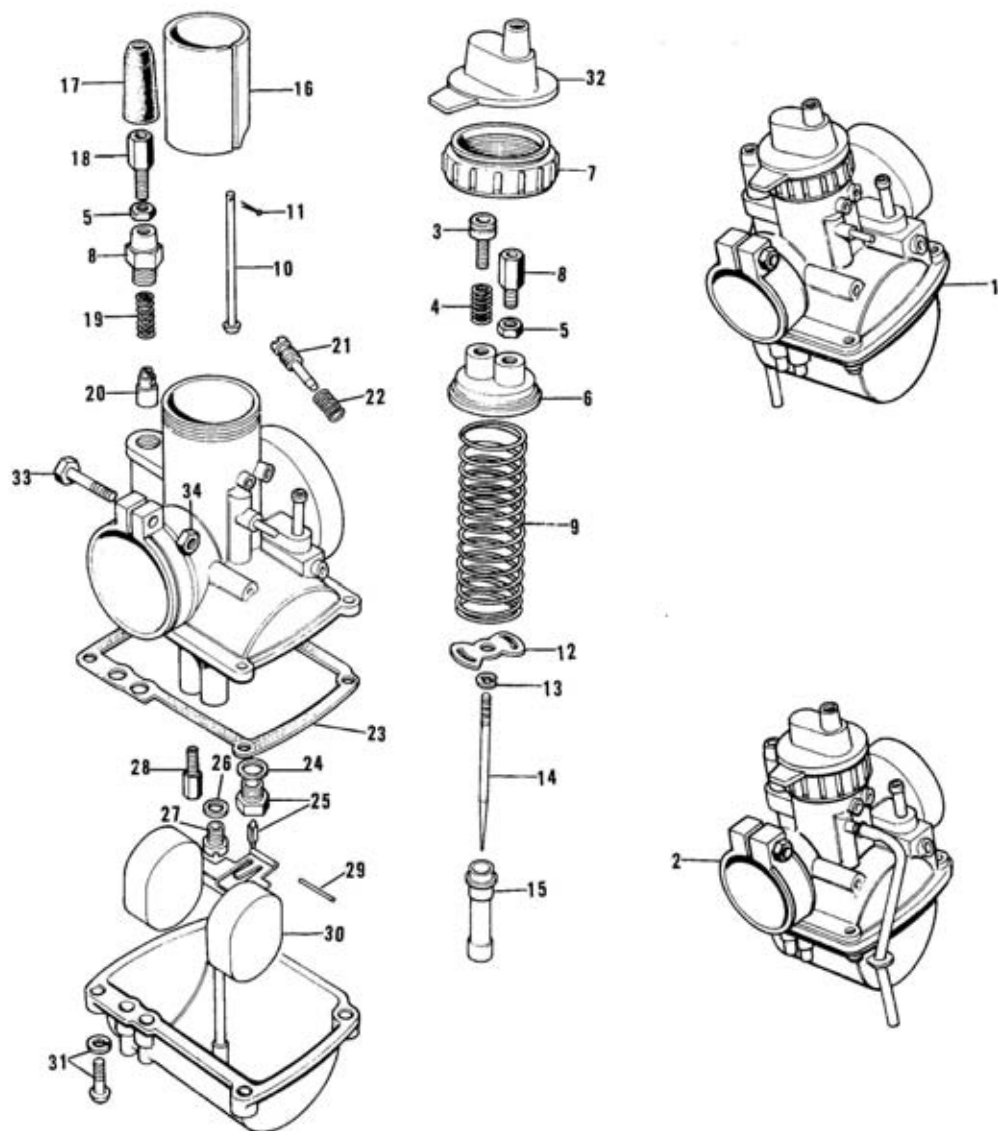
10. Air Cleaner, Mufflers



10. Air Cleaner, Mufflers

Ref. No.	Part No.	Part Name	Quantity	Remarks
1 ~ 6	11010-057-21	AIR CLEANER ASSY	1	Flat Black
2	11011-013	BODY—air cleaner	1	
3	11013-026	ELEMENT—air cleaner	1	
4	220B0410A	SCREW—pan head, 4 x 10	2	
5	461F0400	WASHER—spring, 4 m/m	2	
6	410B0400	WASHER—plain, 4 m/m	2	
7	92003-073	BOLT—air cleaner fitting	1	
8	92022-021	WASHER—plain	1	
9	110B0612	BOLT—hex head, 6 x 12	3	
	116B0612	BOLT—hex head, 6 x 12	ALT	
10	461F0600	WASHER—spring, 6 m/m	3	
11	92037-065	CLAMP—air inlet pipe	3	
12	220B0635	SCREW—pan head, 6 x 35	3	
13	11015-027	PIPE—air inlet, L.H. & R.H.	2	
14	11015-028	PIPE—air inlet, Center	1	
15	18069-038	HOLDER—exhaust pipe	3	
16	460E0800	WASHER—spring, 8 m/m	6	
17	316B0800	NUT, 8 m/m	6	
18	18049-063	PIPE—exhaust	3	
19	18043-008	CONNECTOR—muffler	3	
20	18044-004	HOLDER—muffler connector	3	
21	220B0628	SCREW—pan head, 6 x 28	6	
22,25 ~ 27	18001-045	MUFFLER ASSY, L.H.	1	
23,25 ~ 27	18001-046	MUFFLER ASSY, Center	1	
24 ~ 27	18001-047	MUFFLER ASSY, R.H.	1	
25	18033-050	BAFFLE TUBE	3	
26	92024-016	WASHER—lock, 6 m/m	3	
27	110B0612	BOLT—hex head, 6 x 12	3	
	116B0612	BOLT—hex head, 6 x 12	ALT	
28	110B0820	BOLT—hex head, 8 x 20	2	
	116B0820	BOLT—hex head, 8 x 20	ALT	
29	411B0800	WASHER—plain, 8 m/m	2	
30	461F0800	WASHER—spring, 8 m/m	2	
31	310B0800	NUT, 8 m/m	2	

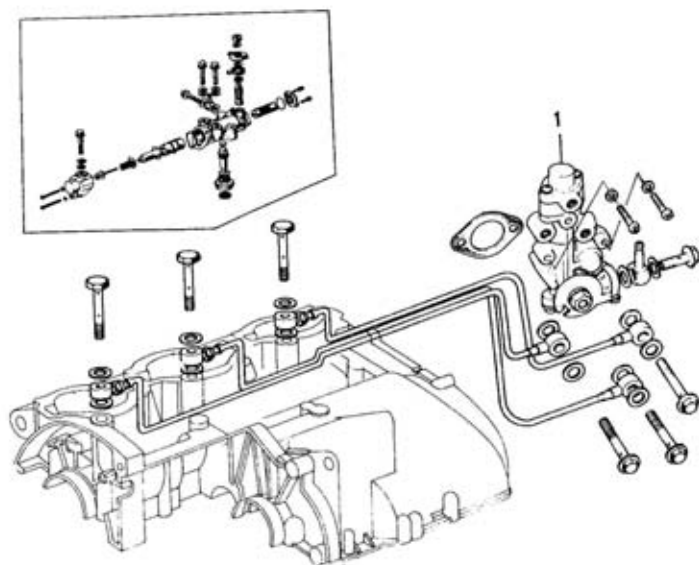
11. Carburetors



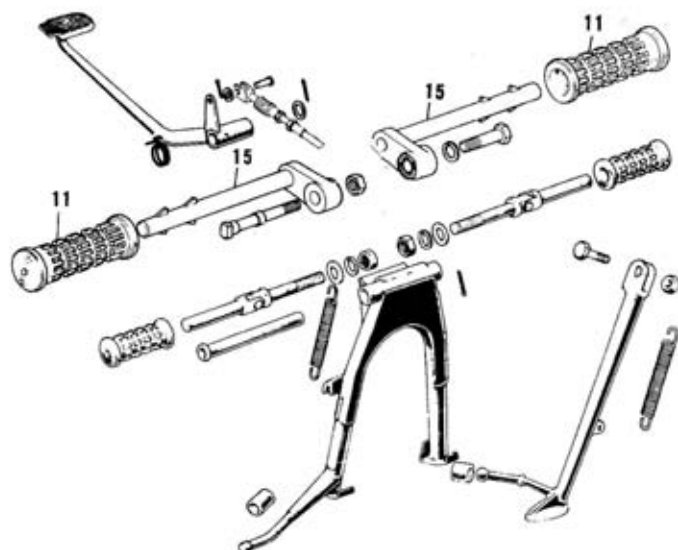
11. Carburetors

Ref. No.	Part No.	Part Name	Quantity	Remarks
1	16001-136	CARBURETOR ASSY, L.H.	1	
2	16001-137	CARBURETOR ASSY, R.H. & Center	2	
3	16021-016	THROTTLE ADJUSTER	1 x 3	
4	16022-005	SPRING—throttle adjuster	1 x 3	
5	16003-004	NUT—cable adjuster lock	2 x 3	
6	16005-005	TOP—mixing chamber	1 x 3	
7	16004-019	CAP—mixing chamber	1 x 3	
8	16002-002	CABLE ADJUSTER	2 x 3	
9	16006-019	SPRING—throttle valve	1 x 3	
10	16024-012	ROD—throttle valve stop	1 x 3	
11	550D1210	PIN—cotter, 1.2 x 10	1 x 3	
12	16007-002	SPRING SEAT—throttle valve	1 x 3	
13	16008-004	CIRCLIP	1 x 3	
14	16009-051	JET NEEDLE, 4EJ7	1 x 3	
15	16017-060	NEEDLE JET, 0-0	1 x 3	
16	16025-049	VALVE—throttle	1 x 3	CA2.0
17	16036-005	CAP—rubber	1 x 3	
18	16012-004	CAP—starter plunger	1 x 3	
19	16013-003	SPRING—starter plunger	1 x 3	
20	16016-002	PLUGNER—starter	1 x 3	
21	16014-001	SCREW—pilot air adjust	1 x 3	
22	16022-007	SPRING—pilot air adjust screw	1 x 3	
23	16019-012	GASKET—float chamber	1 x 3	
24	16029-004	WASHER—float valve seat	1 x 3	
25	16030-017	FLOAT VALVE ASSY	1 x 3	
26	16034-001	WASHER—main jet	1 x 3	
27	92063-109	MAIN JET, #75	1 x 3	STD
	92063-107	MAIN JET, #70		} Option
	92063-108	MAIN JET, #72.5		
	92063-122	MAIN JET, #77.5		
	92063-123	MAIN JET, #80		
28	92064-021	PILOT JET, #20	1 x 3	
29	16032-003	FLOAT PIN	1 x 3	
30	16031-015	FLOAT	1 x 3	
31	16033-012	SCREW—float chamber fitting	4 x 3	
32	16036-010	CAP—carburetor rubber	1 x 3	
33	16010-004	SCREW—clamp	1 x 3	
34	310B0600	NUT, 6 m/m	1 x 3	

12. Oil Pump



15. Footrests, Stands, Brake Pedal



12. Oil Pump

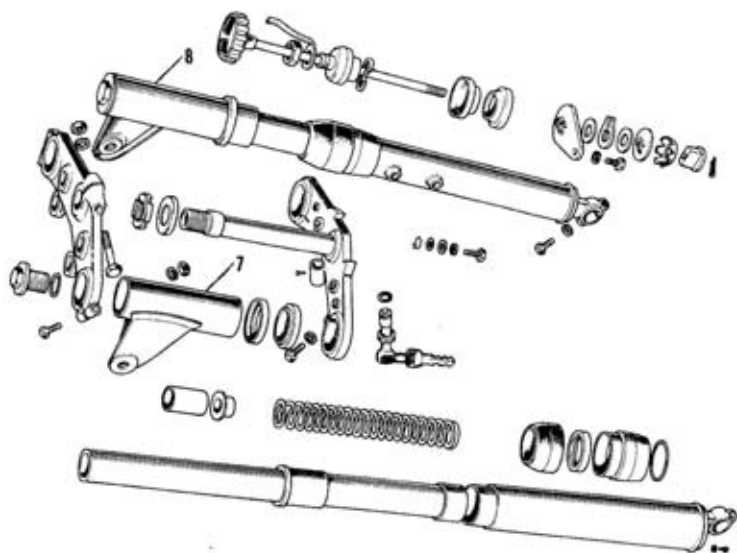
Ref. No.	Part No.	Part Name	Quantity	Remarks
1	16082-034	OIL PUMP ASSY	1	

15. Footrests, Stands, Brake Pedal

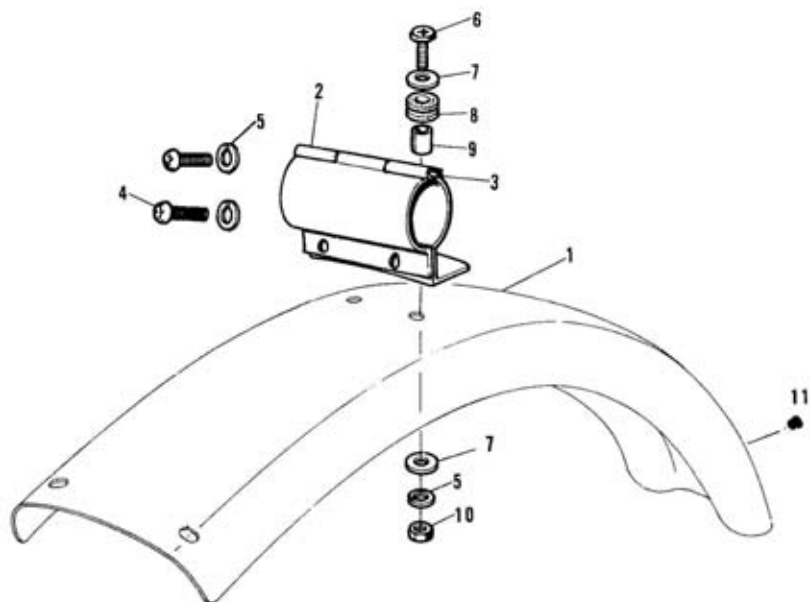
Ref. No.	Part No.	Part Name	Quantity	Remarks
11	92076-015	RUBBER—footrest	2	
15	34003-033	BAR—footrest	2	

Ref. No. 8 ~ 10, 12 ~ 14 and 34 are not required for S1 Model.

17. Front Fork



18. Fenders



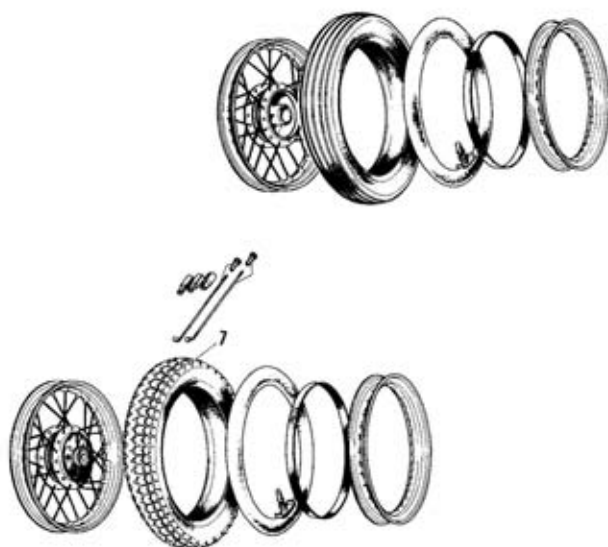
17. Front Fork

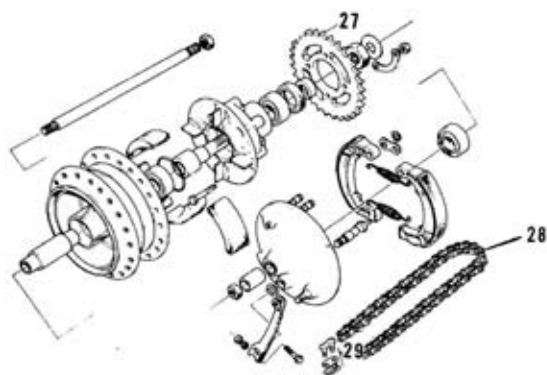
Ref. No.	Part No.	Part Name	Quantity	Remarks
1 ~ 27	44001-074-21	FRONT FORK ASSY	1	Flat Black
7	44033-037-21	COVER—L.H. fork	1	Flat Black
8	44034-036-21	COVER—R.H. fork	1	Flat Black

18. Fenders

Ref. No.	Part No.	Part Name	Quantity	Remarks
1	35022-057	FENDER—rear	1	
2	35025-022	BRACKET—rear fender	1	
3	32111-003	PIN	1	
4	220E0612	SCREW—pan head, 6 x 12	2	
5	461F0600	WASHER—spring, 6 m/m	4	
6	220E0620	SCREW—pan head, 6 x 20	2	
7	92022-125	WASHER—plain	4	
8	92075-076	DAMPER RUBBER	2	
9	92027-129	COLLAR	2	
10	310B0600	NUT, 6 m/m	2	
11	92074-005	RUBBER PLUG	1	

19. Tires, Rims

21. Rear Hub



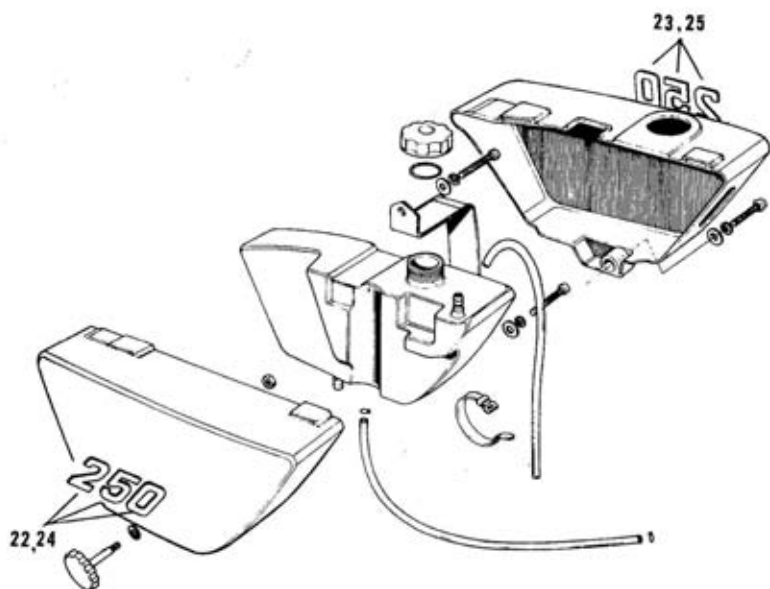
19. Tires, Rims

Ref. No.	Part No.	Part Name	Quantity	Remarks
7	41014-024	TIRE—rear, S3.25-18 4PR	1	Y622

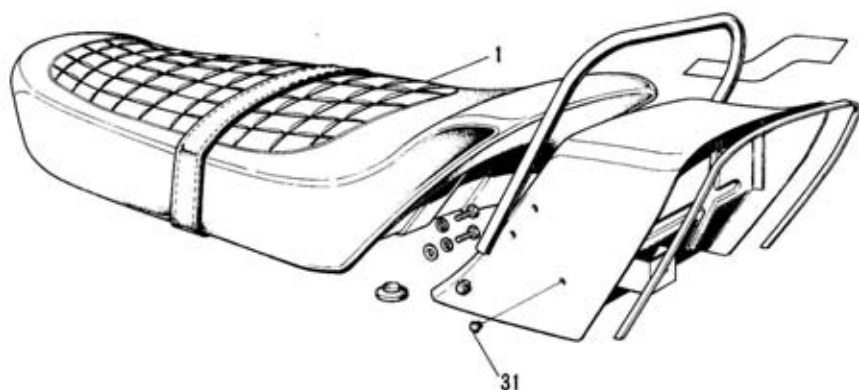
21. Rear Hub

Ref. No.	Part No.	Part Name	Quantity	Remarks
27	42041-115	REAR SPROCKET, 48T	1	STD
	42041-103	REAR SPROCKET, 46T		Option
28, 29	695X52102	CHAIN ASSY—drive	1	
29	92058-018	JOINT ASSY—drive chain	1	

23. Oil Tank, Side Covers, Chain Cover



24. Dual Seat



23. Oil Tank, Side Covers, Chain Cover

Ref. No.	Part No.	Part Name	Quantity	Remarks
22	56018-092	EMBLEM--L.H. side cover	1	} for Pearl Candytone Red
23	56018-094	EMBLEM--R.H. side cover	1	
24	56018-093	EMBLEM--L.H. side cover	1	} for Pearl White
25	56018-095	EMBLEM--R.H. side cover	1	

24. Dual Seat

Ref. No.	Part No.	Part Name	Quantity	Remarks
1	53001-071	SEAT ASSY--dual	1	
31	92074-019	PLUG--rubber	2	

Numerical Parts Index (New Part Number Sequence)

* : Indicates the Newly developed parts for Kawasaki 250 Model S1-

Part No.	Page	Q'ty	Part No.	Page	Q'ty
* 11001-061	02	2	* 16062-015	02	6
* 11001-062	02	1	* 16082-024	12	1
* 11004-047	02	3	16084-014	09	1
* 11005-082	02	1	* 18001-045	08	1
* 11005-083	02	1	* 18001-046	08	1
* 11005-084	02	1	* 18001-047	08	1
11009-027	02	2	* 18033-050	08	2
* 11010-057	08	1	18043-008	08	3
11011-013	08	1	18044-004	08	2
11013-026	08	1	* 18049-063	08	3
* 11015-027	08	2	18067-002	02	3
* 11015-028	08	1	18065-028	08	3
* 13001-051	04	2	32111-002	14	1
* 13002-023	04	3	34002-022	12	2
* 13008-033	04	2	35022-057	14	1
* 13024-043	04		35025-022	14	1
* 13025-038	04		* 41014-024	16	1
* 13027-051	04		* 42041-102	16	
* 13029-052	04		* 42041-115	16	1
13031-037	04	1	44001-074	21	14
13032-007	04	2	44033-037	21	14
* 13081-044	06	1	44034-026	21	14
13121-021	04	1	53001-071	18	1
13144-017	06	1	* 56018-052	18	1
13144-018	06		* 56018-053	18	1
13144-025	06		* 56018-094	18	1
* 16001-136	10	1	* 56018-095	18	1
* 16001-127	10	2	92002-068	04	1
16002-002	10	6	92002-073	08	1
16002-004	10	6	92015-019	04	1
* 16004-019	10	3	92022-021	08	1
16005-005	10	3	92022-125	14	2
* 16006-019	10	2	92024-006	04	1
16007-002	10	3	92024-016	08	3
16008-004	10	2	92024-021	04	1
* 16009-051	10	3	92027-031	04	1
16010-004	10	2	92027-129	14	2
16012-006	10	3	92036-005	04	6
16013-002	10	3	92036-013	04	1
16014-001	10	3	* 92037-065	08	3
16016-002	10	3	92038-001	04	1
* 16017-060	10	3	92038-015	04	1
16019-012	10	2	92050-023	04	1
* 16021-016	10	3	92050-041	04	1
16022-005	10	2	92055-018	04	1
16022-007	10	3	* 92058-018	16	1
* 16024-012	10	3	92063-107	10	
16025-045	10	3	92063-108	10	
16029-004	10	3	92063-109	10	3
16030-017	10	2	92063-122	10	
16031-011	10	2	92063-123	10	
16032-002	10	2	92064-021	10	3
16033-012	10	12	92070-011	02	2
16034-001	10	3	92074-005	14	1
16036-005	10	2	92074-019	18	2
* 16036-010	10	2	92075-076	14	2
* 16060-014	02	2	92076-015	12	2
* 16061-015	02	2	92081-080	06	5

Standard Hardwares Index (Part No. Sequence)

* : Indicates the Newly developed parts for Kawasaki 250 Model S1.

Part No.	Page	Q'ty	Part No.	Page	Q'ty
110B0412	08	3			
110B0412	08	3			
110B0820	08	2			
116B0412	08	ALT			
116B0412	08	ALT			
116B0420	08	ALT			
172G0820	02	6			
172G0830	02	6			
220B0410A	08	2			
220B0628	08	6			
220B0625	08	3			
220F0412	14	2			
220F0420	14	2			
310B0400	10	3			
310B0400	08	2			
316B0800	02	12			
316B0800	02	6			
316B0800	08	6			
410B0400	08	2			
410B0800	08	2			
460F0800	02	12			
460F0800	02	6			
460F0800	08	6			
461F0400	08	2			
461F0600	14	4			
461F0400	08	3			
461F0800	08	2			
463F0600	04	1			
550D1210	10	3			
* 695X52102	14	1			