

KAWASAKI

パーツカタログ



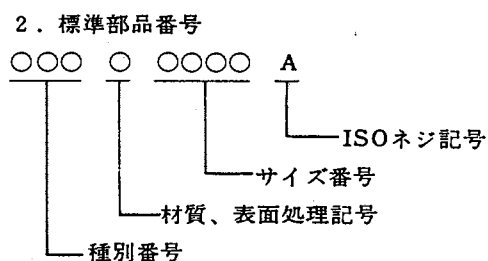
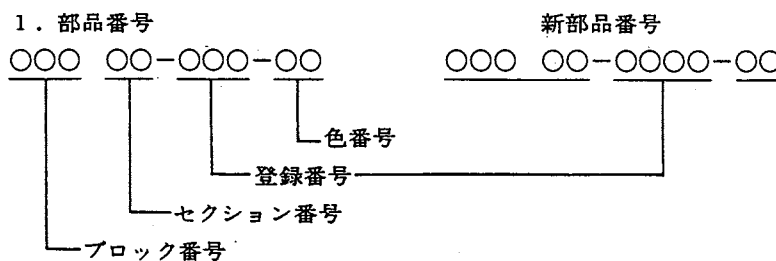
レフトサイド



ライトサイド

まえがき

1. この部品表はカワサキオートバイ“KV75-A6”用として供給される交換用部品及びユニットのリストです。
2. 部品番号について



3. 略記号について

d：直径 W：巾 L：長さ O.D：外径
T：歯数 t：厚さ I.D：内径

4. 部品注文にあたって

1. 部品を注文される際は必ず部品番号、部品名及び数量を明記して下さい。
2. 塗装部品の中で色番号のある部品は、必ず部品番号の末尾に色番号を明記して御注文下さい。

例： 51001-064-7F TANK, fuel, Lime Green

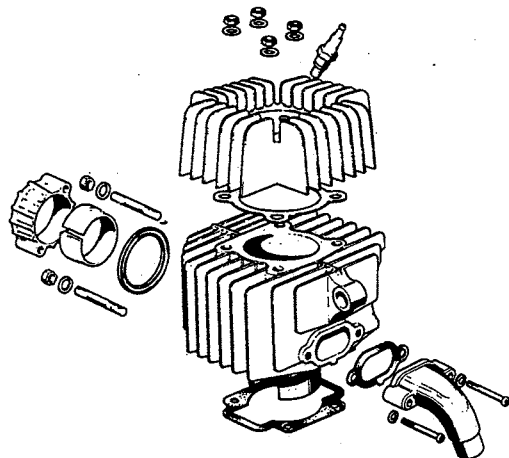
昭和52年5月1日

川崎重工業株式会社発動機事業本部
カワサキオートバイ販売株式会社

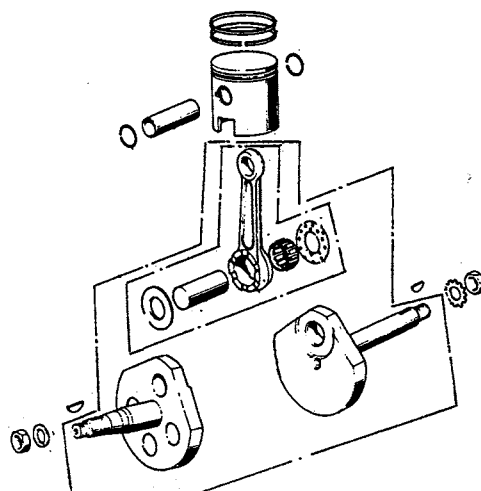


KV75-A6

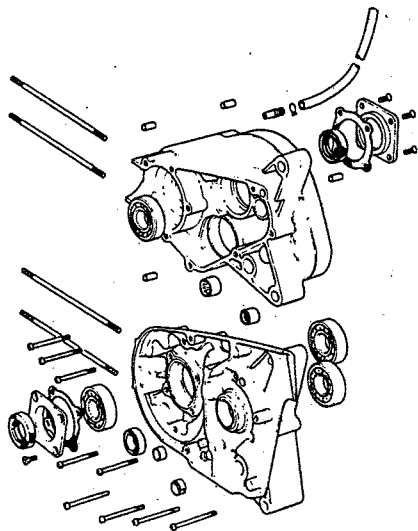
1. シリンダーヘッド, シリンダー...ページ 1



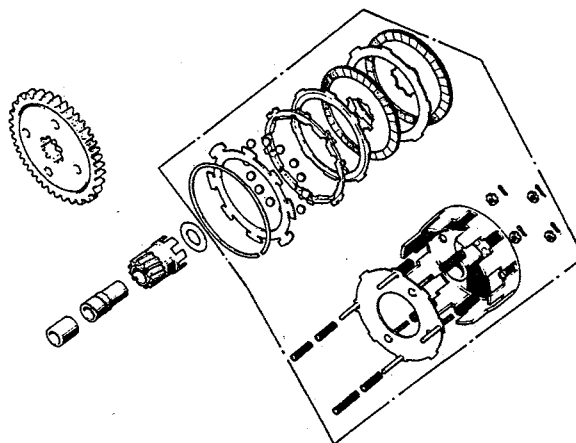
3. クランクシャフト, ピストン...ページ 5



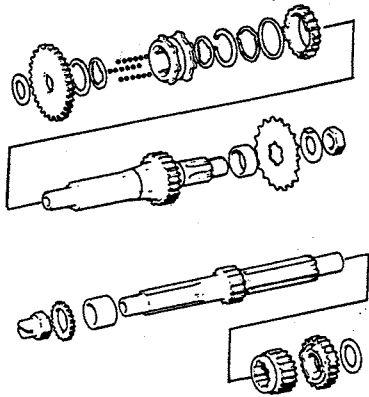
2. クランクケース.....ページ 3



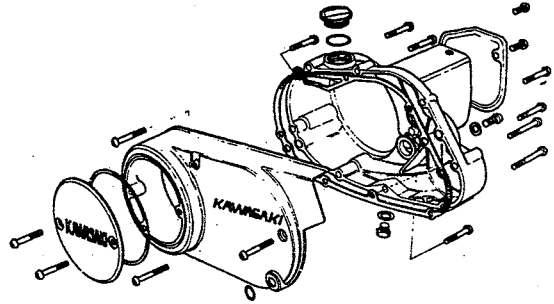
4. クラッチ.....ページ 7



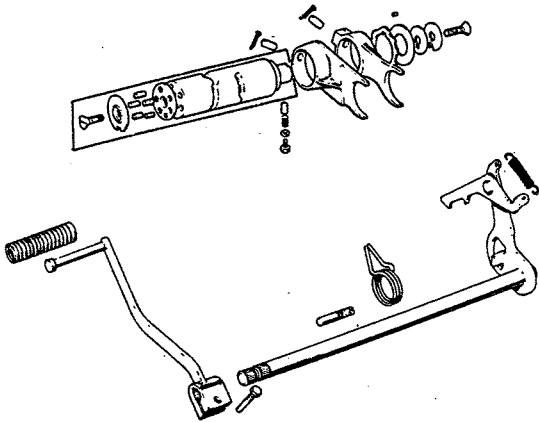
5. トランスミッションギヤ.....ページ9



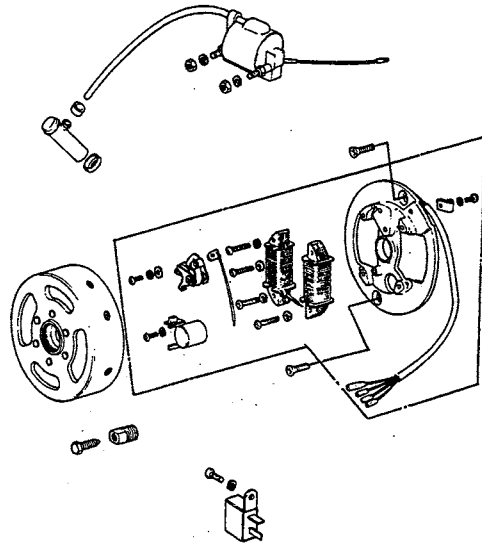
8. エンジンカバー.....ページ15



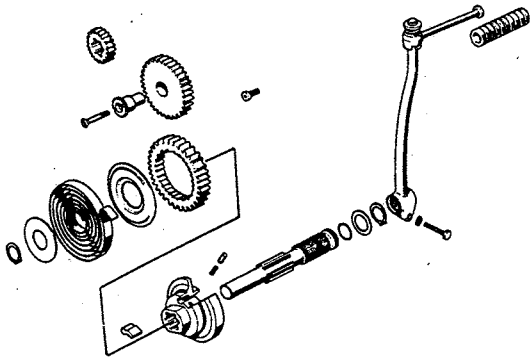
6. ギヤチェンジメカニズム.....ページ11



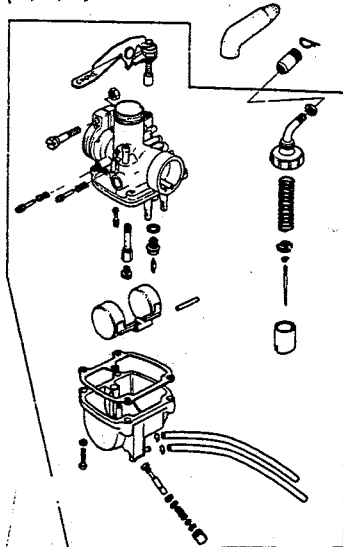
9. エンジン電装品.....ページ17



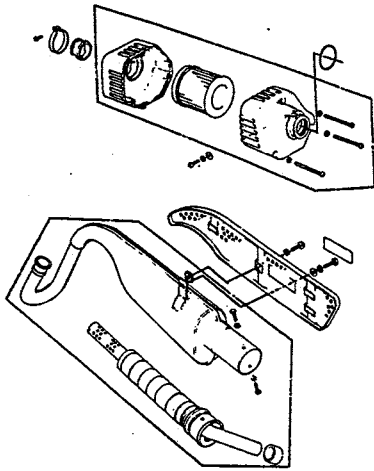
7. キックスターメカニズム...ページ13



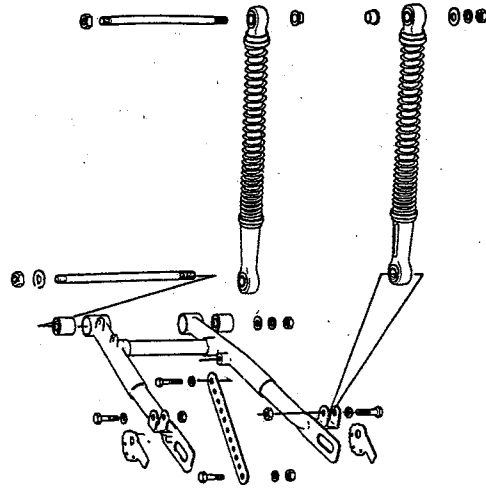
10. キャブレター.....ページ19



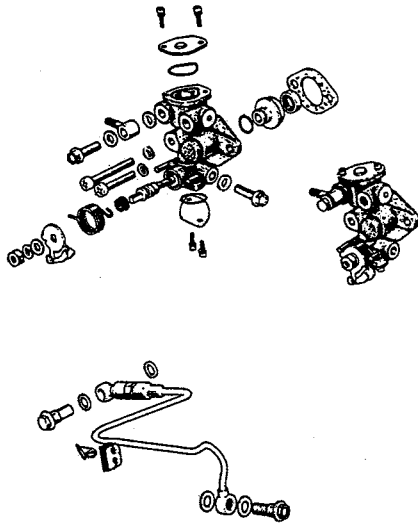
11. エアークリーナー, マフラー.....ページ21



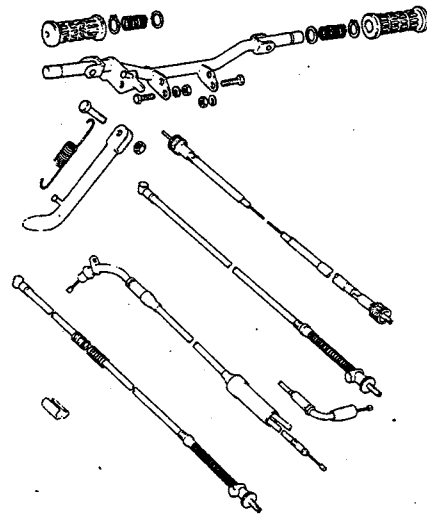
14. スイングアーム
リヤショックアブソーバー.....ページ27



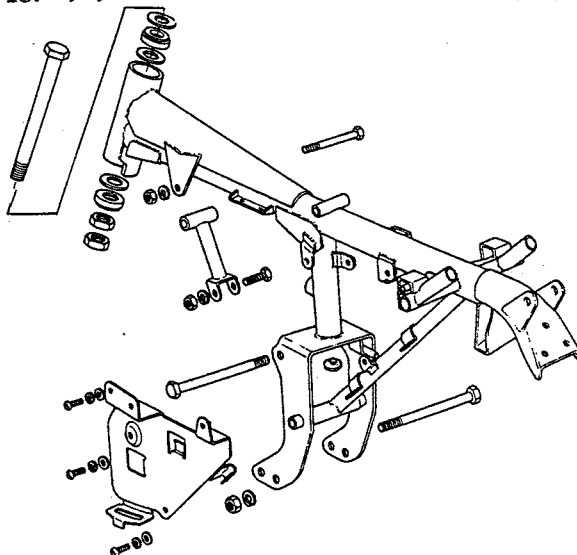
12. オイルポンプ.....ページ23



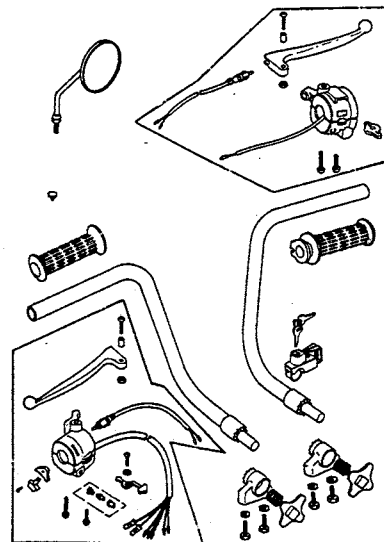
15. スタンド, フートレスト,
ケーブル.....ページ29



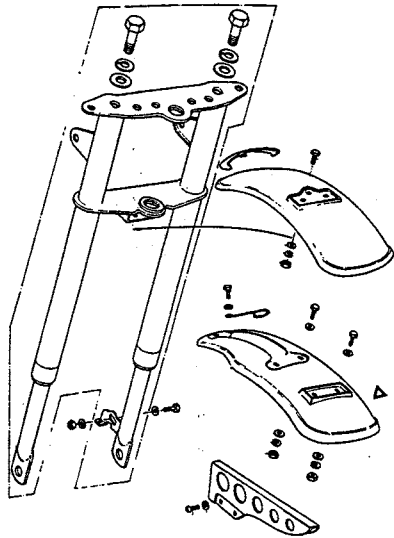
13. フレーム.....ページ25



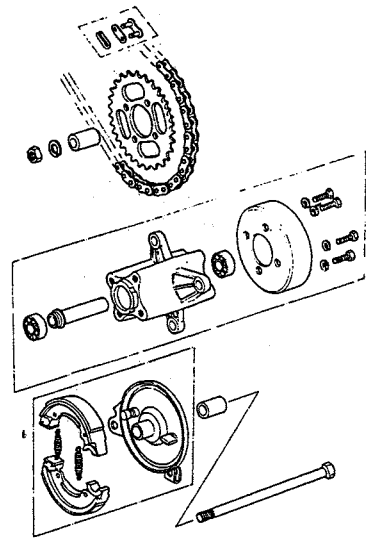
16. ハンドルバー, グリップ.....ページ31



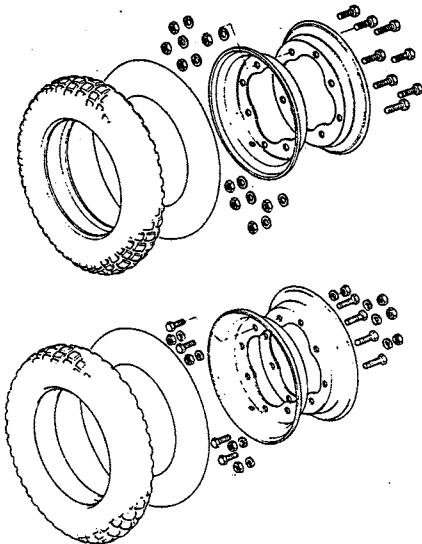
17. フロントフォーク,フェンダー...ページ33



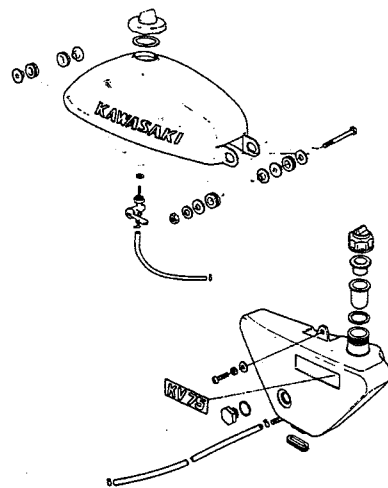
20. リヤハブ.....ページ39



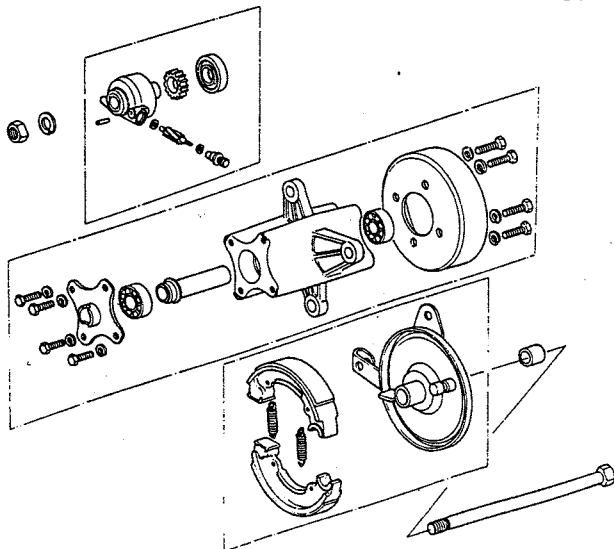
18. ホイール.....ページ35



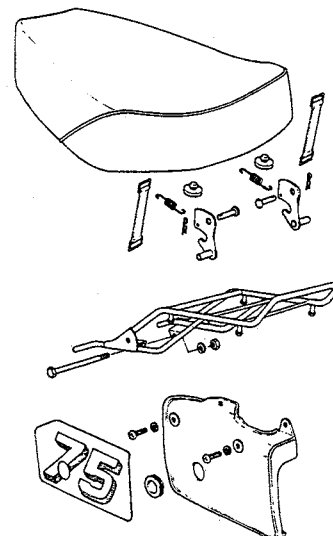
21. フュエルタンク, オイルタンク.....ページ41



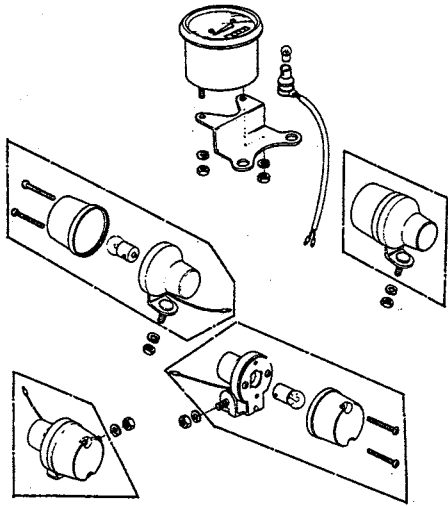
19. フロントハブ.....ページ37



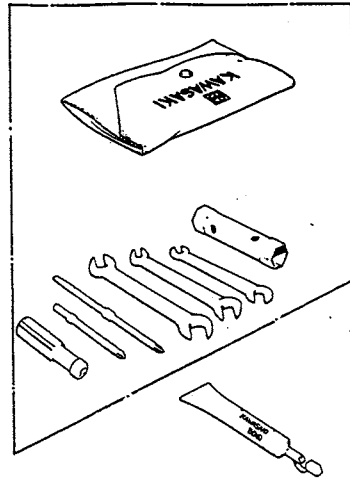
22. シート, サイドカバー, キャリア...ページ43



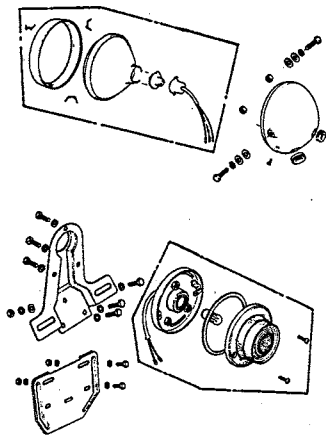
23. スピードメーター,
ターンシグナルランプ.....ページ45



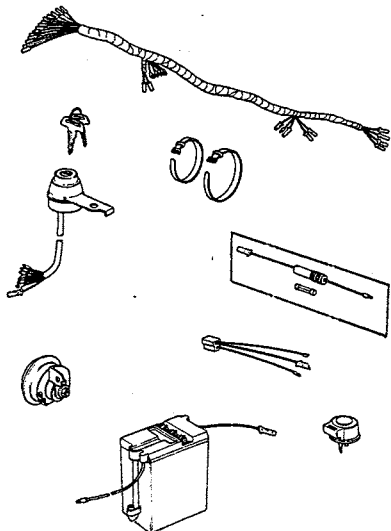
26. ツール.....ページ51



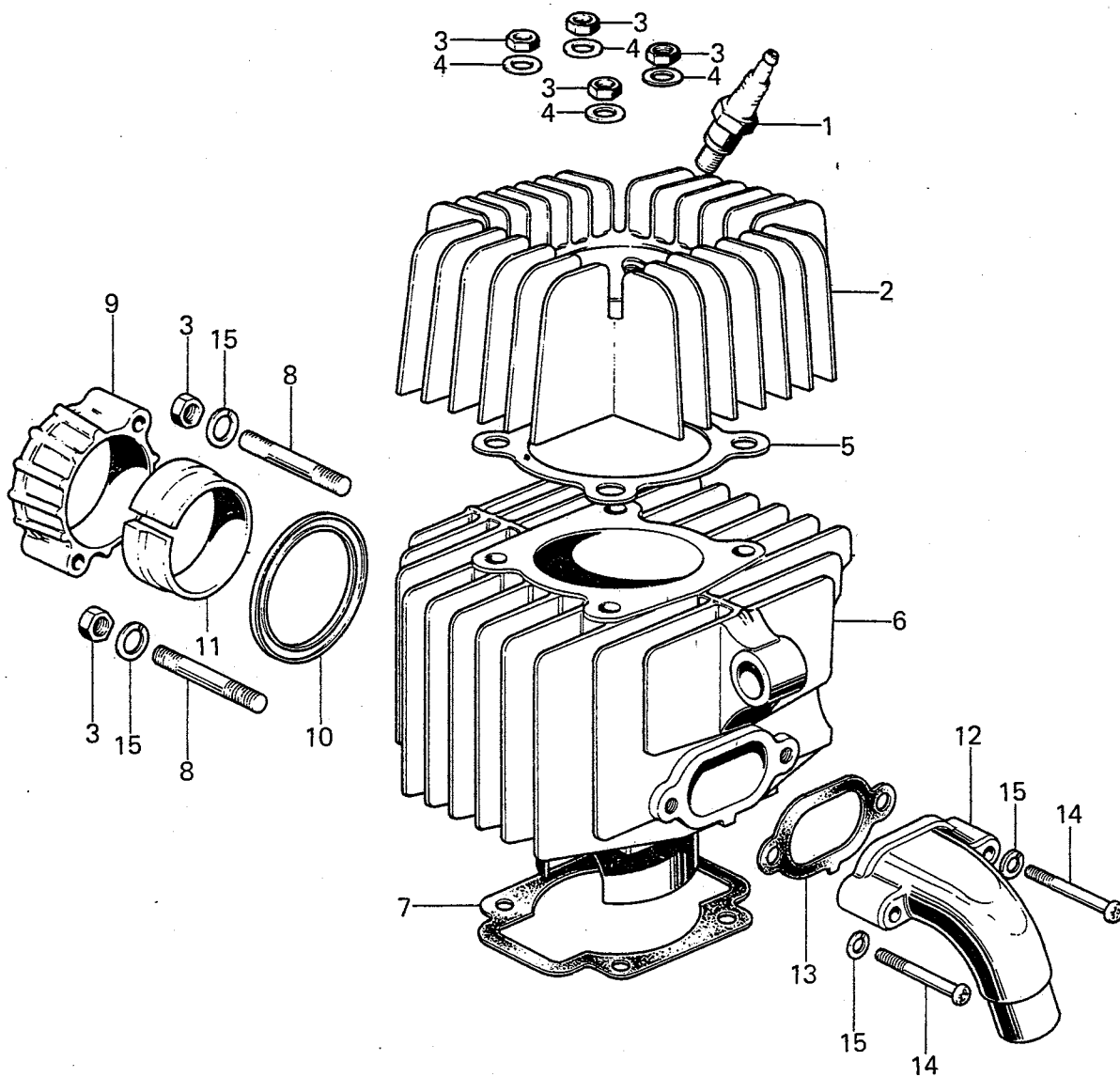
24. ヘッドランプ, テールランプ...ページ47



25. 車体電装品.....ページ49



1. シリンダーヘッド, シリンダー



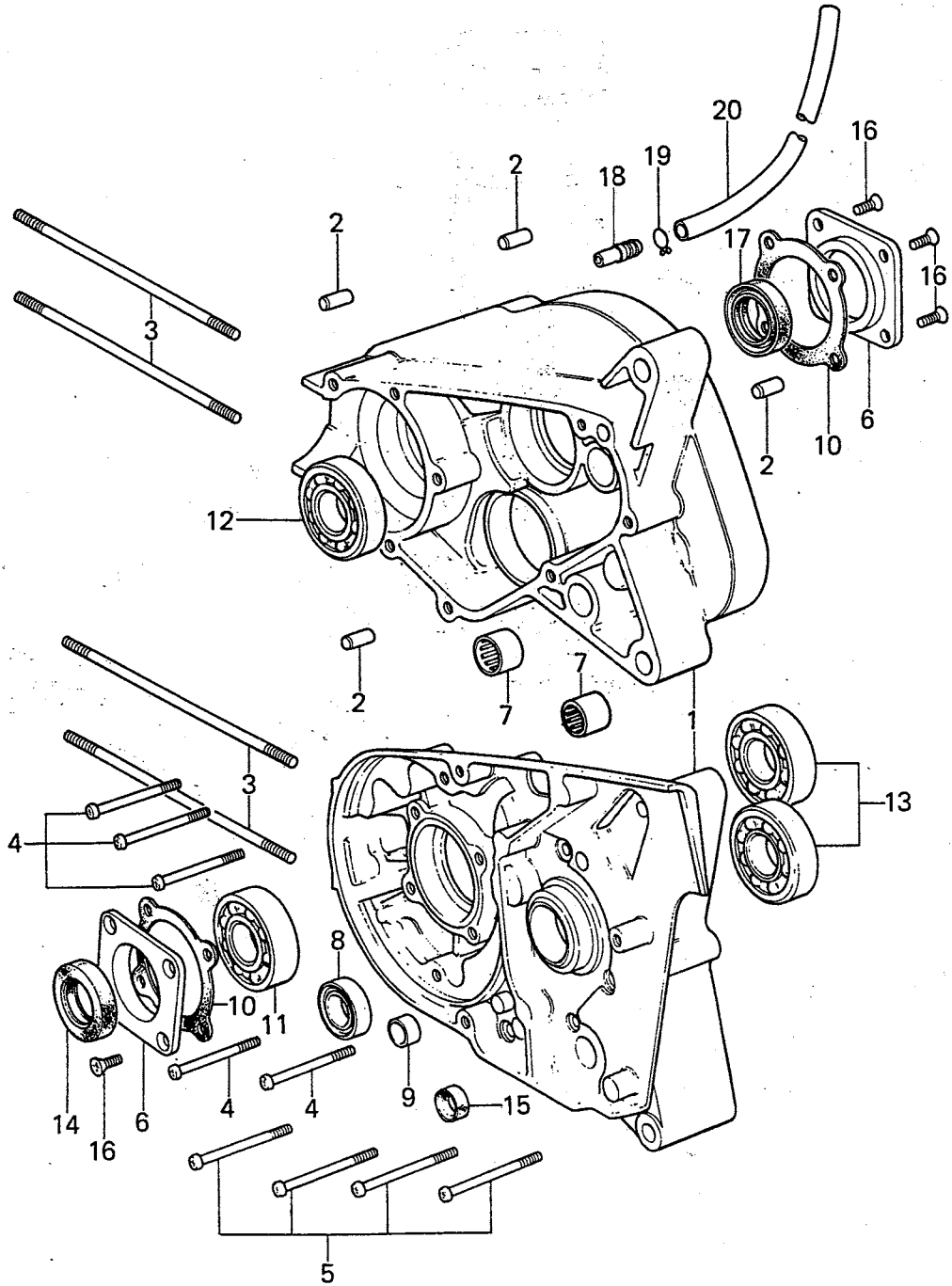
1. シリンダーヘッド, シリンダー

No.	部品番号	部 品 名	個 数	備 考
1	92070-001	SPARK PLUG, NGK B7HS	1	
2	11001-014	CYLINDER HEAD	1	
3	310B0600	NUT, 6 m/m	6	
4	411B0600	WASHER, plain, 6 m/m	4	
5	11004-014	GASKET, cylinder head	1	
6	11005-078	CYLINDER	1	
7	11009-008	GASKET, cylinder base	1	
8	171G0630	STUD, 6 x 30	2	
9	18069-035	HOLDER, exhaust pipe	1	
10	18067-004	GASKET, exhaust pipe	1	
11	18070-005	INSERT, exhaust pipe holder	1	
12	11015-023	PIPE, inlet	1	
13	11017-003	GASKET, inlet pipe	1	
14	220B0625	SCREW, pan head, 6 x 25	2	
15	461F0600	WASHER, spring, 6 m/m	4	

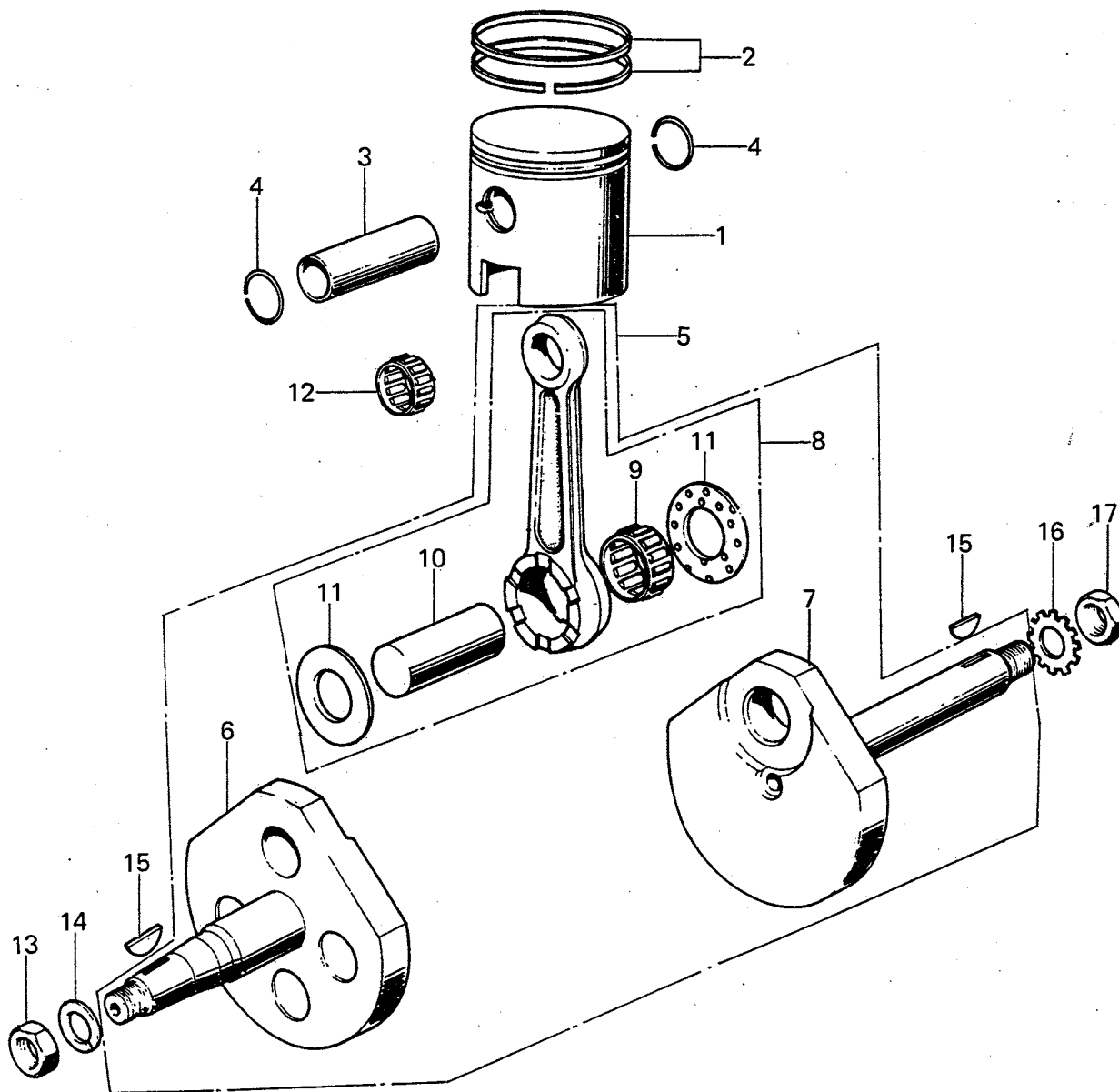
2. クランクケース

No.	部品番号	部 品 名	個 数	備 考
1	14001-068	CRANK CASE SET	1	
2	551A0816	DOWEL PIN, 8 x 16	4	
3	92004-033	STUD, 6 x 20	4	
4	220B0635	SCREW, pan head, 6 x 35	5	
5	220B0660	SCREW, pan head, 6 x 60	4	
6	14020-009	RETAINER, oil seal	2	
7	92046-024	NEEDLE BEARING	2	
8	92049-001	OIL SEAL, SB22327	1	
9	92053-001	OIL SEAL, VB14246	1	
10	14023-002	GASKET, oil seal retainer	2	
11	601B6204	BALL BEARING, # 6204	1	
12	601B6303	BALL BEARING, # 6303	1	
13	601B6203	BALL BEARING, # 6203	2	
14	653B203508	OIL SEAL, TB20358	1	
15	92049-004	OIL SEAL, SB12205	1	
16	221B0614	SCREW, countersunk head, 6 x 14	8	
17	653B243508	OIL SEAL, TB24358	1	
18	14069-006	BREATHER	1	
19	92037-078	CLAMP, breather pipe	1	
20	700Q04500	TUBE, vinyl, 4 x 500	1	

2. クランクケース



3. クランクシャフト, ピストン



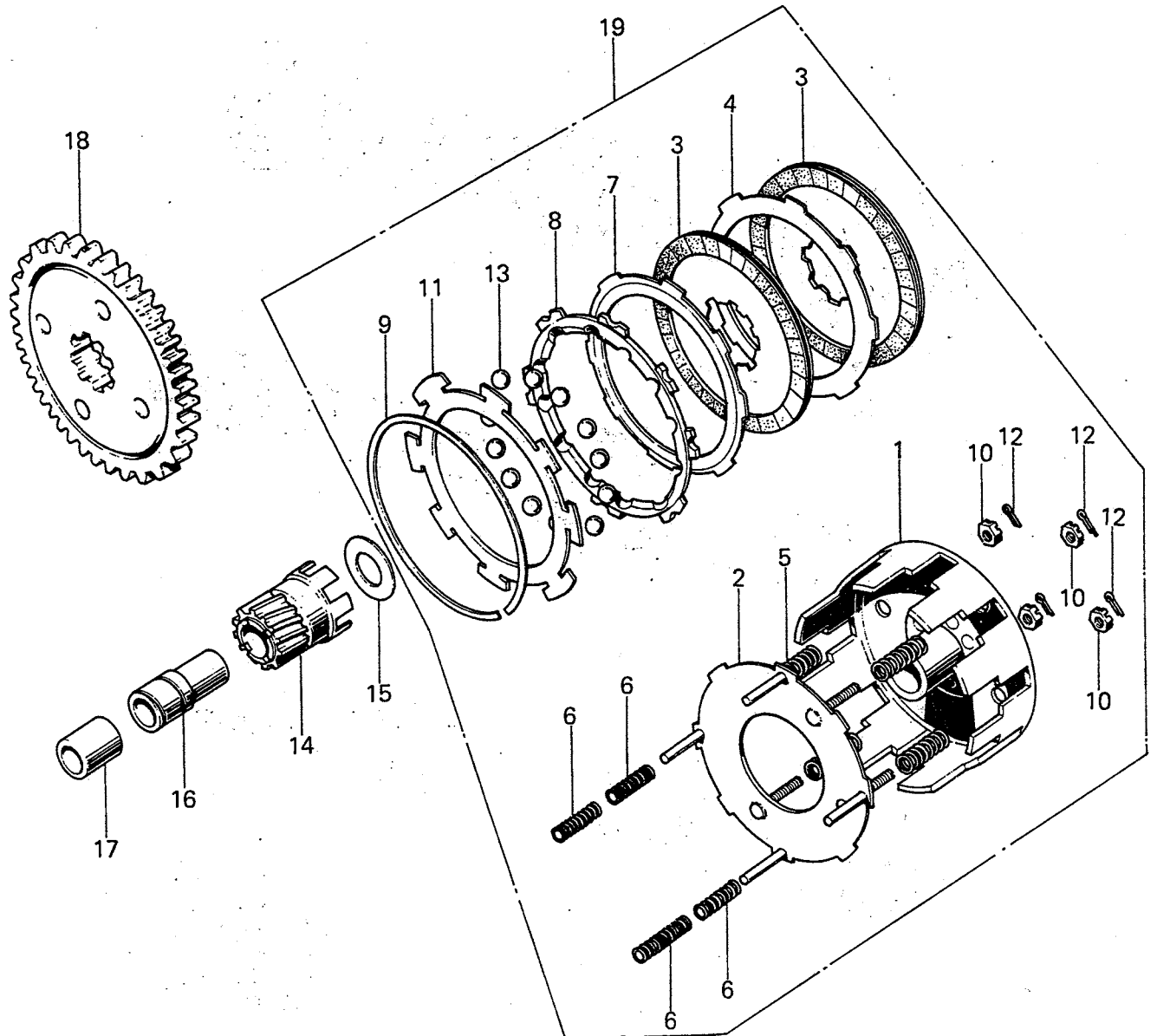
3. クランクシャフト, ピストン

No.	部品番号	部 品 名	個 数	備 考
1	13001-047	PISTON, STD	1	
	13029-047	PISTON, 0.020" over size	(1)	} Option
	13027-027	PISTON 0.040" over size	(1)	
2	13008-029	RING SET, piston, STD	1	
	13025-034	RING SET, piston, 0.020" over size	(1)	} Option
	13024-037	RING SET, piston, 0.040" over size	(1)	
3	13002-019	PIN, piston	1	
4	92036-007	CIRCLIP, piston pin	2	
5	13036-030	CRANKSHAFT & CONNECTING ROD ASSY	1	
6	13037-043	CRANKSHAFT, L.H.	1	
7	13038-039	CRANKSHAFT, R.H.	1	
8	13044-015	CONNECTING ROD SET	1	
9	13034-002	NEEDLE BEARING, big end	1	
10	13035-024	PIN, crank	1	
11	92026-002	WASHER, side	2	
12	13033-028	NEEDLE BEARING, small end	1	72KTV030
13	313B1000	NUT, 10 m/m	1	
14	461E1000	WASHER, spring, 10 m/m	1	
15	92038-001	WOORUFF KEY	2	
16	464H1200	WASHER, lock, 12 m/m	1	
17	92016-024	NUT, 12 m/m	1	

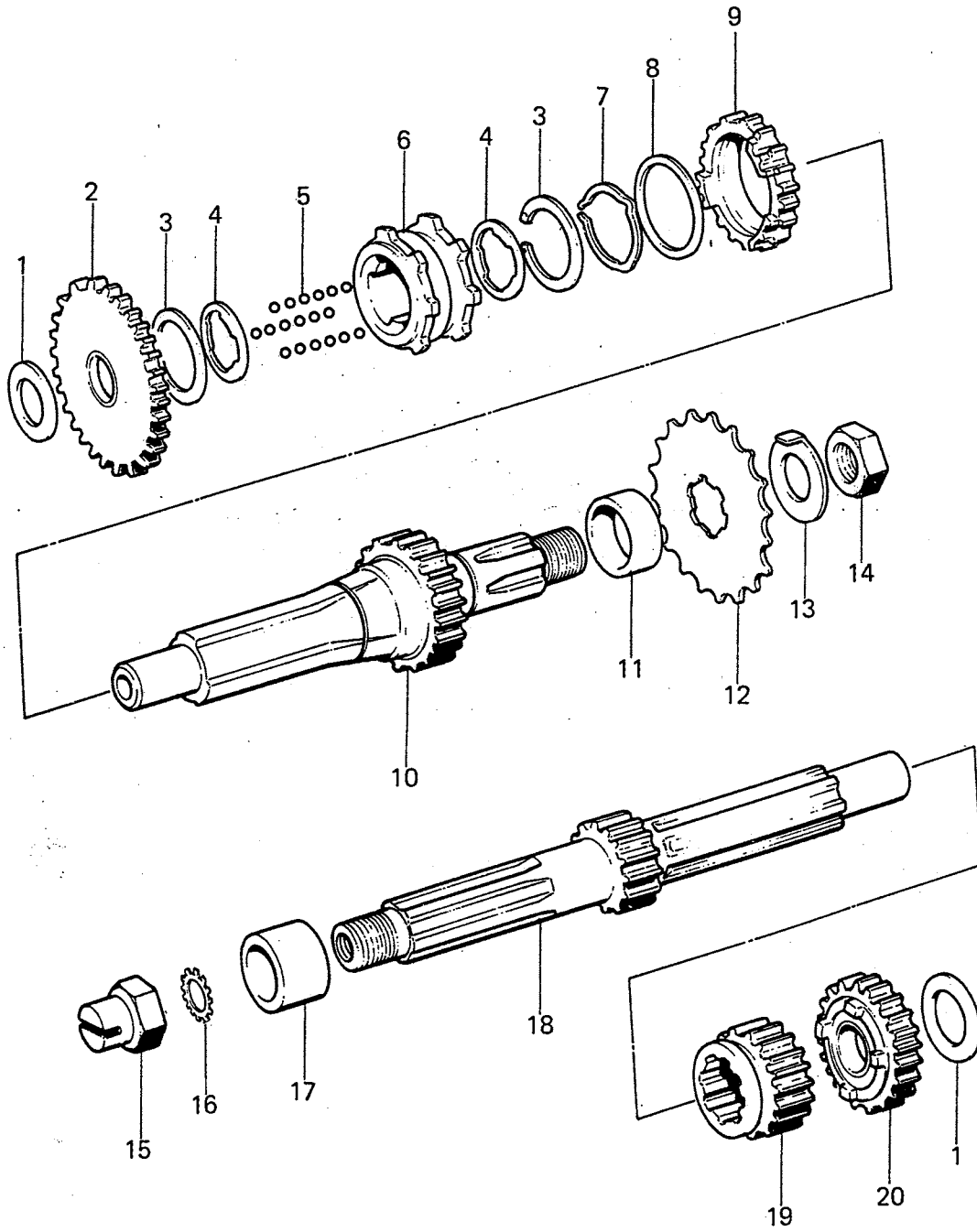
4. クラッチ

No.	部品番号	部 品 名	個 数	備 考
1	13095-028	HOUSING, clutch	1	
2	13083-006	WHEEL, clutch	1	
3	13088-024	PLATE, clutch friction	2	
4	13179-003	PLATE, clutch	1	
5	92081-086	SPRING, clutch	3	
6	92081-087	SPRING, return	4	
7	13189-003	PLATE, ball holder	1	
8	13190-003	PLATE, ball guide	1	
9	13191-003	CIRCLIP	1	
10	13195-003	NUT, 6 m/m	3	
11	13198-003	PLATE, ball holder	1	
12	550D1615	COTTER PIN, 1.6 x 15	3	
13	600A1200	STEEL BALL. "3/8"	16	
14	13084-003	HUB ASSY, clutch	1	
15	92022-142	WASHER, thrust	1	
16	13215-005	BUSHING, clutch	1	
17	92027-125	COLLAR	1	
18	13216-004	GEAR ASSY, clutch	1	
19	13081-036	CLUTCH ASSY	1	

4. クラッチ



5. トランスミッションギヤー



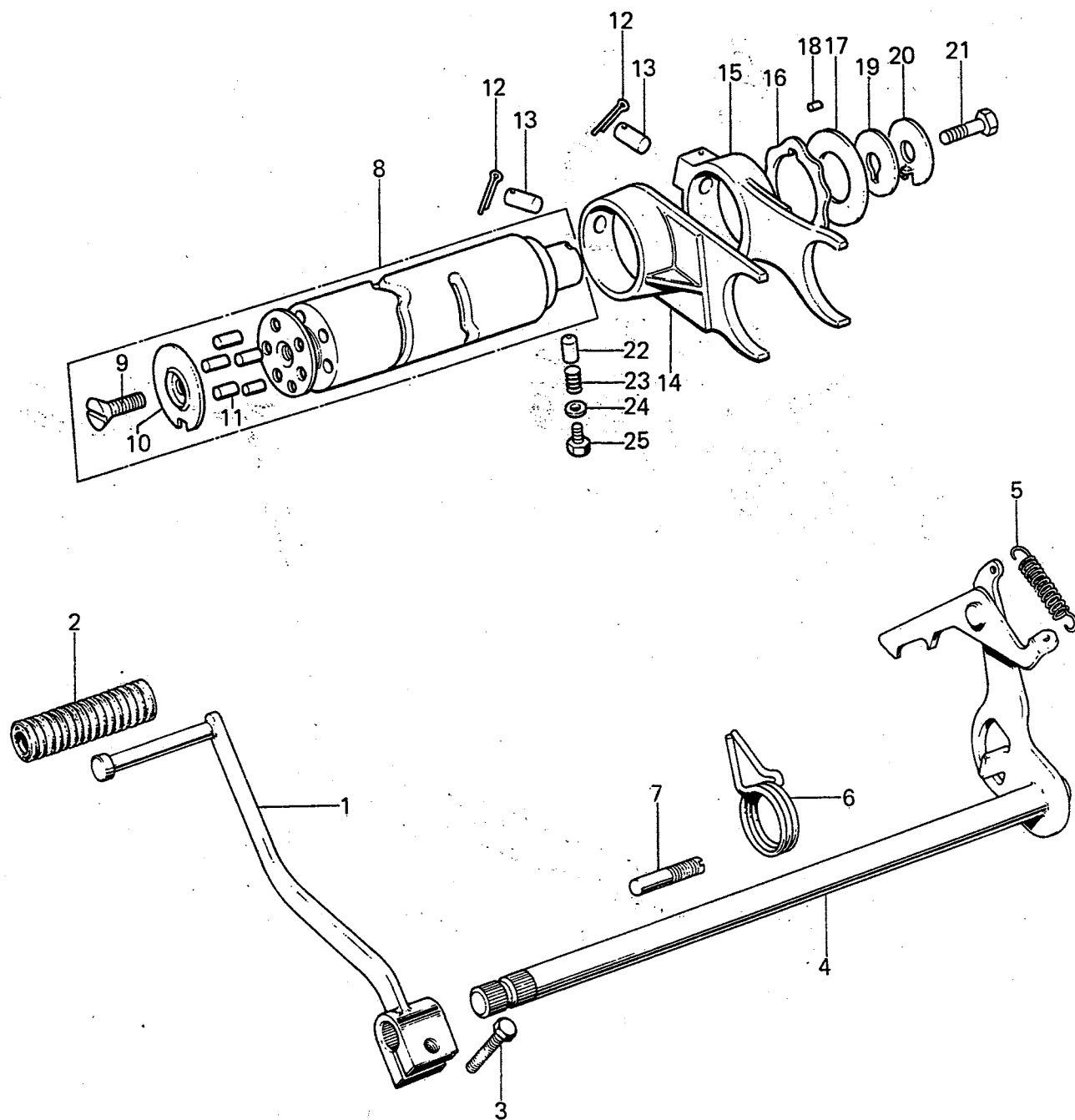
5. トランスミッションギヤ

No.	部品番号	部 品 名	個 数	備 考
1	92022-174	WASHER, plain	2	
2	13129-035	LOW GEAR, output	1	32 T
3	92033-003	CIRCLIP, 26 m/m	2	
4	92033-004	CIRCLIP	2	
5	600A0500	STEEL BALL, "5/32"	30	
6	13139-004	SHIFTER	1	
7	92033-025	CLRCLIP, 22 m/m	1	
8	92022-106	WASHER, 22 m/m	1	
9	13131-032	2ND GEAR, output	1	26 T
10	13128-029	SHAFT, output	1	22 T
11	92027-001	COLLAR, oil seal	1	
12	13144-1004	ENGINE SPROCKET, 14T	1	
13	92022-002	WASHER, lock, 12 m/m	1	
14	313B1200A	NUT, 12 m/m	1	
15	92015-046	NUT, oil pump	1	
16	464H1200	WASHER, lock, 12 m/m	1	
17	92027-002	COLLAR, clutch pinion	1	
18	13127-030	SHAFT, drive	1	11 T
19	13130-003	2ND GEAR, drive	1	17 T
20	13136-034	TOP GEAR, drive	1	21 T

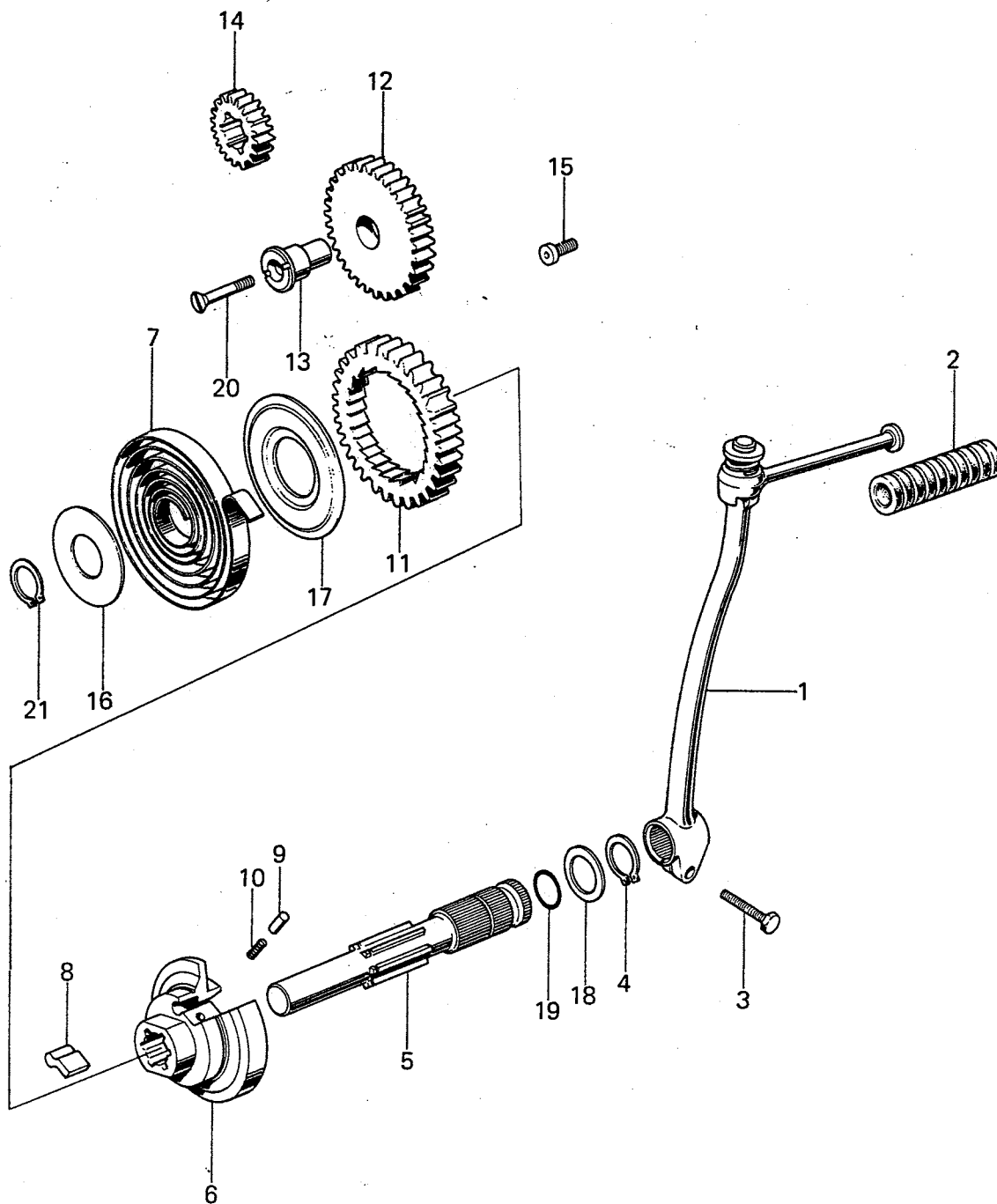
6. ギヤーチェンジメカニズム

No.	部品番号	部 品 名	個 数	備 考
1	13242-004	PEDAL, gear change	1	
2	13157-004	RUBBER, gear change pedal	1	
3	110B0620	BOLT, hex head, 6 x 20	1	
4	13161-021	LEVER ASSY, gear change	1	
5	92081-003	SPRING, gear change lever	1	
6	92083-001	SPRING, return	1	
7	92043-061	PIN, gear change pedal spring	1	
8	13239-1004	DRUM ASSY, gear change	1	
9	212B0616	SCREW, countersunk head, 6 x 16	1	
10	13142-002	PLATE, change drum pin	1	
11	92043-004	PIN, gear change drum	5	
12	550D3020	COTTER PIN, 3.0 x 20	2	
13	92043-005	PIN, selector fork guide	2	
14	13140-033	FORK, selector low & 2nd	1	
15	13140-034	FORK, selector, top	1	
16	13145-007	DISC, gear change drum operating	1	
17	92026-106	WASHER, thrust	1	
18	610A0406	PIN, dowel, 4 x 6	1	
19	92022-175	WASHER	1	
20	92024-028	WASHER	1	
21	114B0818	BOLT, hex head, 8 x 18	1	
22	92043-076	PIN, neutral positoning	1	
23	92081-112	SPRING	1	
24	92065-090	GASKET	1	
25	92001-131	BOLT, 10 m/m	1	

6. ギヤーチェンジメカニズム



7. キックスターメカニズム



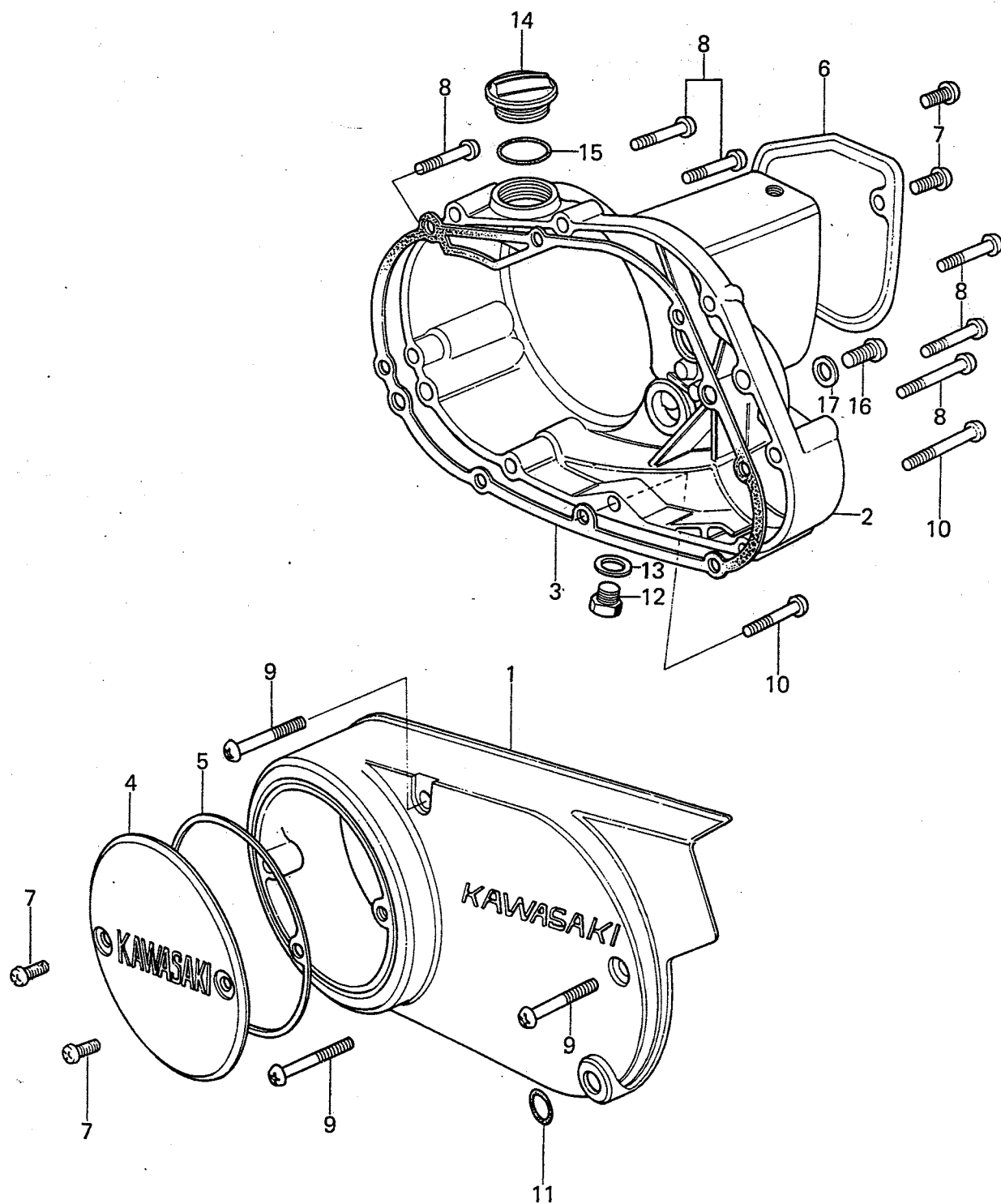
7. キックスターターメカニズム

No.	部品番号	部品名	個数備考
1	13058-031	PEDAL, kickstarter	1
2	13063-005	RUBBER, kickstarter pedal	1
3	110B0625	BOLT, hex head, 6 x 25	1
4	480J1600	CIRCLIP, 16 m/m	2
5	13066-018	SHAFT, kickstarter	1
6	13067-001	DURM, kickstarter	1
7	92082-001	SPRING, kickstarter	1
8	13069-001	PAWL, kickstarter	1
9	92042-001	PIN, kickstarter pawl	1
10	92081-022	SPRING, kickstarter pawl	1
11	13068-003	GERA, kickstarter	1
12	13073-002	GEAR, idle	1
13	13074-002	SHAFT, idle gear	1
14	13075-003	PINION, kickstarter	1
15	13072-001	STOPPER, kickstarter	1
16	13071-001	PLATE, kickstarter spring holder	1
17	13071-002	PLATE, kickstarter gear	1
18	92022-006	WASHER, plain, 16 m/m	1
19	92055-001	"O" RING, 16 m/m	1
20	92010-001	SCREW, countersunk head, 5 x 30.5	1

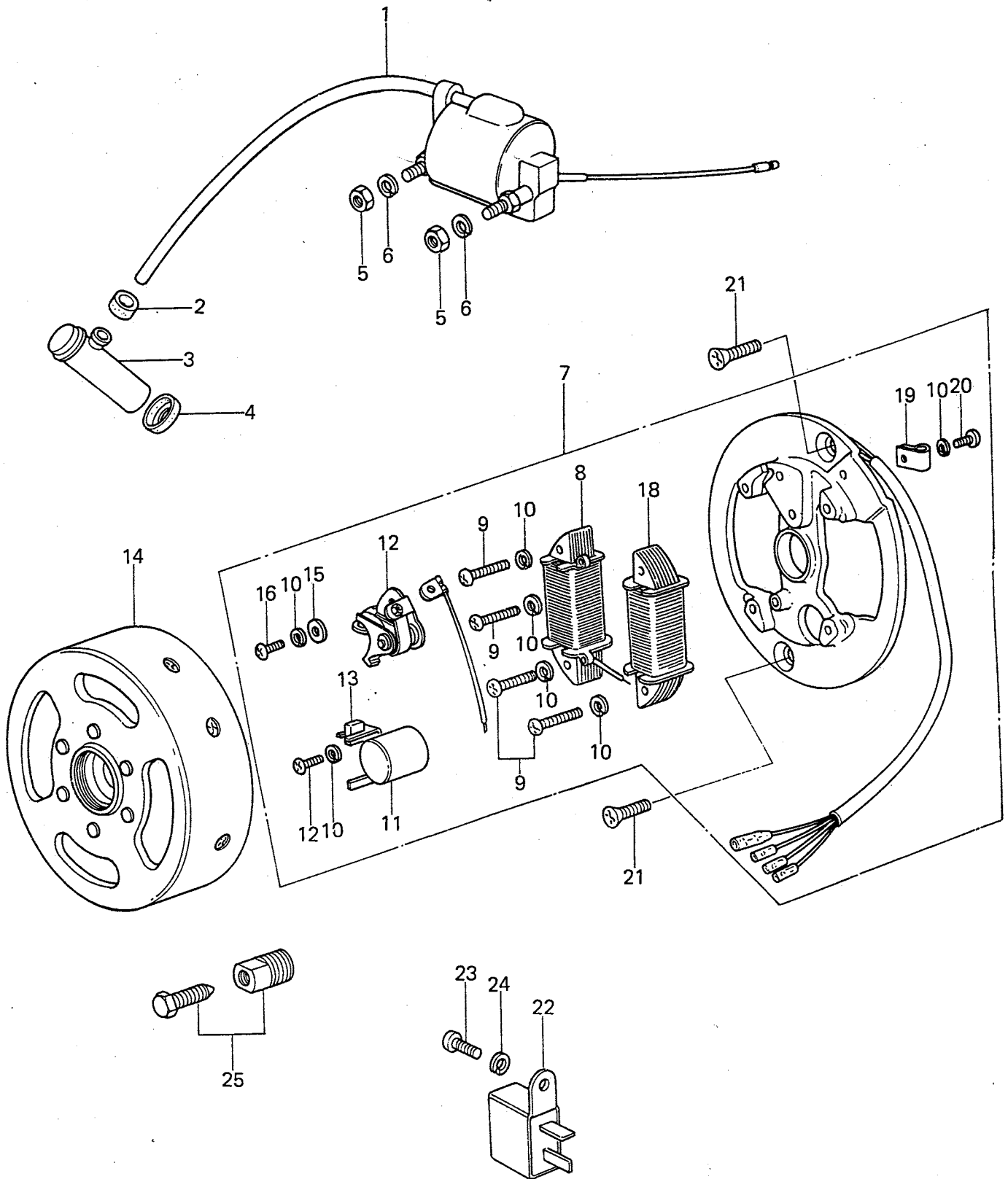
8. エンジンカバー

No.	部品番号	部 品 名	個 数	備 考
1	14031-1008	COVER, L.H. engine	1	
2	14032-1003	COVER, R.H. engine	1	
3	14046-002	GASKET, R.H. engine cover	1	
4	14027-007-79	COVER, contact braker	1	
5	14050-002	GASKET, breaker cover	1	
6	14030-026	COVER, oil pump	1	
7	220B0612	SCREW, pan head, 6 x 12	4	
8	220B0630	SCREW, pan head, 6 x 30	6	
9	220B0645	SCREW, pan, head, 6 x 45	3	
10	220B0650	SCREW, pan head, 6 x 50	2	
11	670B2012	"O" RING, 12 m/m	2	
12	92067-001	PLUG, oil drain	1	
13	92065-011	GASKET, oil drain plug	1	
14	92068-005	PLUG, oil filler	1	
15	92055-026	"O" RING, oil filler plug	1	
16	220B0608	SCREW, pan head, 6x 8	1	
17	92065-035	GASKET, oil level screw	1	

8. エンジンカバー



9. エンジン電装品



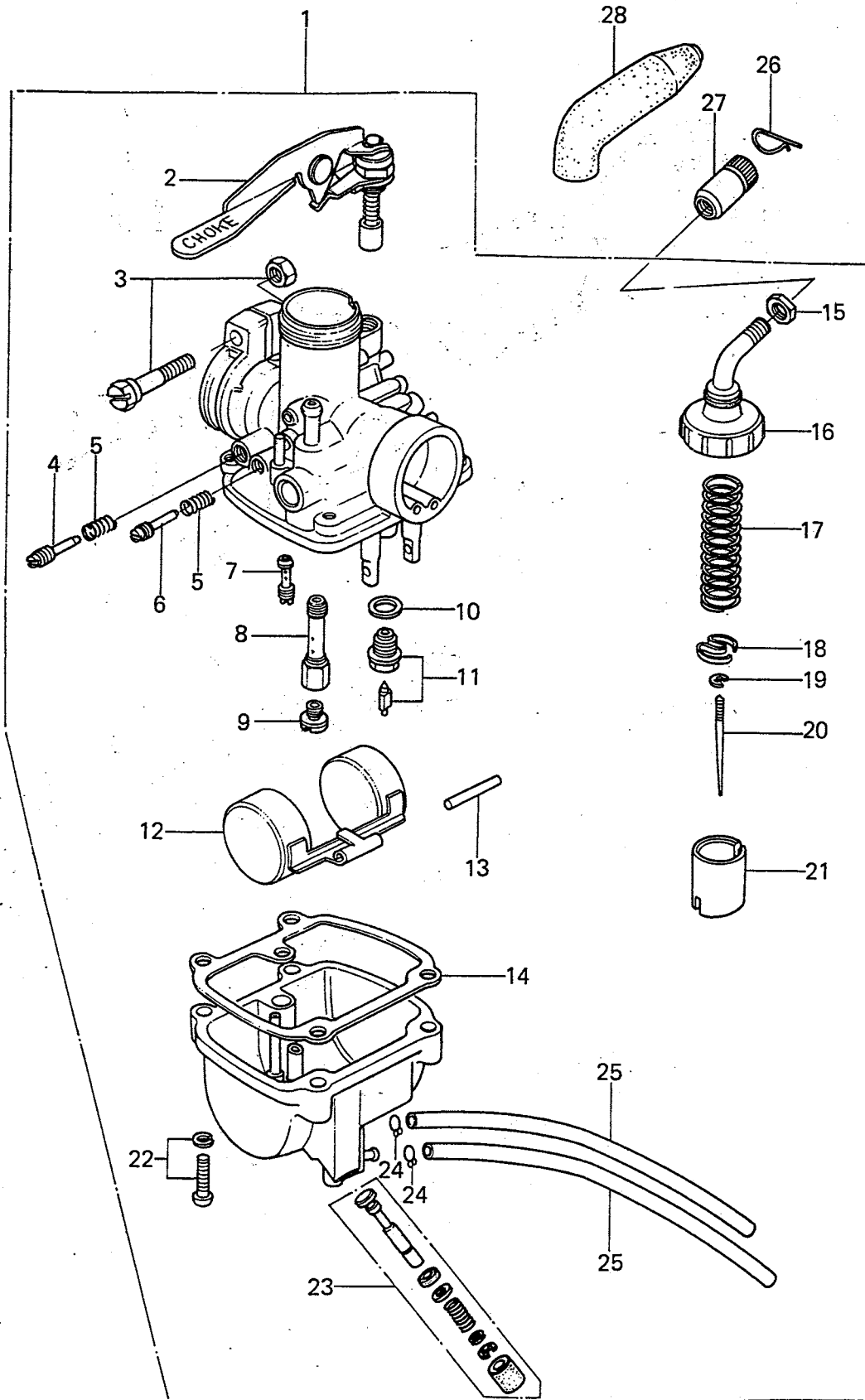
9. エンジン電装品

No.	部品番号	部 品 名	個 数	備 考
1	21121-043	COIL, ignition	1	
2	21132-005	GROMMET B, spark plug cap	1	
3	21130-016	CAP, spark plug	1	
4	21131-004	GROMMET A, spark	1	
5	310B0600	NUT, 6 m/m	2	
6	461F0600	WASHER, spring, 6 m/m	2	
7	21003-1007	STATOR ASSY	1	
8	21049-1002	COIL A, primary ignition	1	
9	220B0425A	SCREW, pan head, 4 x 25	4	
10	461F0400	WASHER, spring, 4 m/m	7	
11	21013-1001	CONDENSER	1	
12	220B0410A	SCREW, pan head, 4 x 10	1	
13	21019-005	FELT, oil	1	
14	21050-021	FLYWHEEL	1	
15	21008-1004	BREAKER ASSY, contact	1	
16	220B0410A	SCREW, pan head, 4 x 10	1	
17	410B0400	WASHER, plain, 4 m/m	1	
18	21047-1005	COIL B, lighting	1	
19	21037-005	CLAMP, wiring harness	1	
20	220B0406A	SCREW, pan head, 4 x 6	1	
21	221B0616	SCREW, countersunk head, 6 x 16	2	
22	21061-015	RECTIFIER	1	
23	220B0510A	SCREW, pan head, 5 x 10	1	
24	461F0500	WASHER, spring, 5 m/m	1	
25	56019-033	PULLER, magneto	(1)	Opion

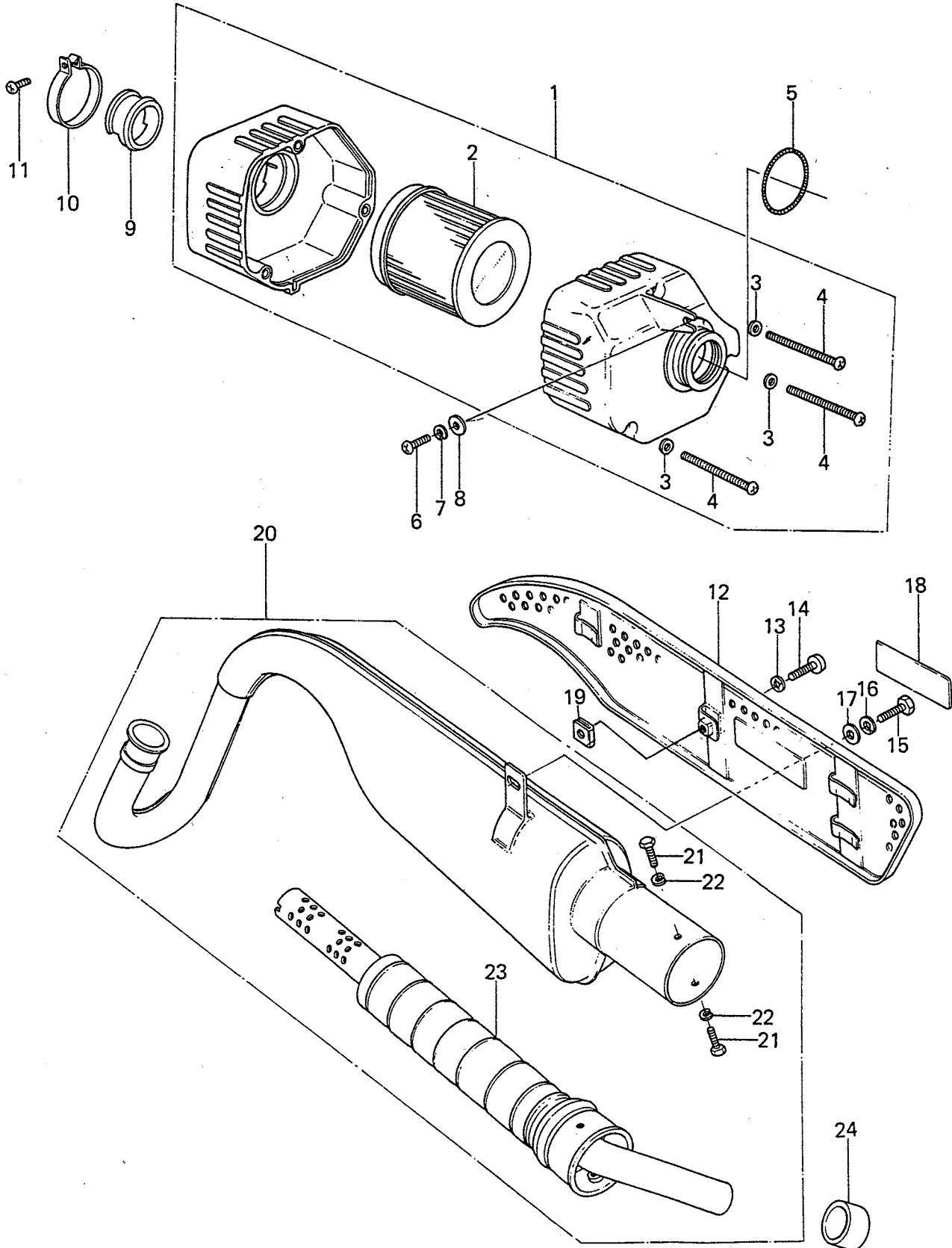
10. キャブレター

No.	部品番号	部 品 名	個 数	備 考
1	16001-1012	CARBURETOR ASSY, VM15SC	1	
2	16016-009	PLUNGER ASSY, starter	1	
3	16010-005	SCREW, clamp	1	
4	16014-002	SCREW, pilot air adjusting	1	
5	16022-007	SPRING, pilot air screw	2	
6	16021-001	SCREW, throttle stop	1	
7	92064-016	PILOT JET, # 15	1	
8	16017-1006	NEEDLE JET, E-0	1	
9	92063-144	MAIN JET, # 67.5R	1	} STD Option
	92063-145	MAIN JET, # 62.5R	(1)	
	92063-146	MAIN JET, # 65.0R	(1)	
	92063-1012	MAIN JET, # 70.0R	(1)	
	92063-108	MAIN JET, # 72.5R	(1)	
10	16029-002	WASHER, valve seat	1	
11	16030-002	FLOAT VALVE ASSY, 1.2φ	1	
12	16031-014	FLOAT	1	
13	16032-003	FLOAT PIN	1	
14	16019-011	GASKET, float chamber	1	
15	16003-006	NUT, cable adjuster lock	1	
16	16005-1003	TOP, mixing chamber	1	
17	16006-001	SPRING, throttle valve	1	
18	16007-001	SPRING SEAT, throttle valve	1	
19	92037-1042	"E" RING, jet needle	1	
20	16009-042	JET NEEDLE, 3G9-3	1	
21	16025-1004	VALVE, throttle, CA = 2.0	1	
22	16033-012	SCREW, float chamber	4	
23	16064-001	EJECTOR ASSY, fuel	1	
24	92037-1043	CLAMP, tube	2	
25	92059-1015	TUBE, 3 x 5 x 200	2	
26	92036-018	CIRCLIP	1	
27	16002-007	CABLE ADJUSTER	1	
28	49006-1010	BOOTS, cable adjuster	1	

10. キャブレター



11. エアークリーナー、マフラー



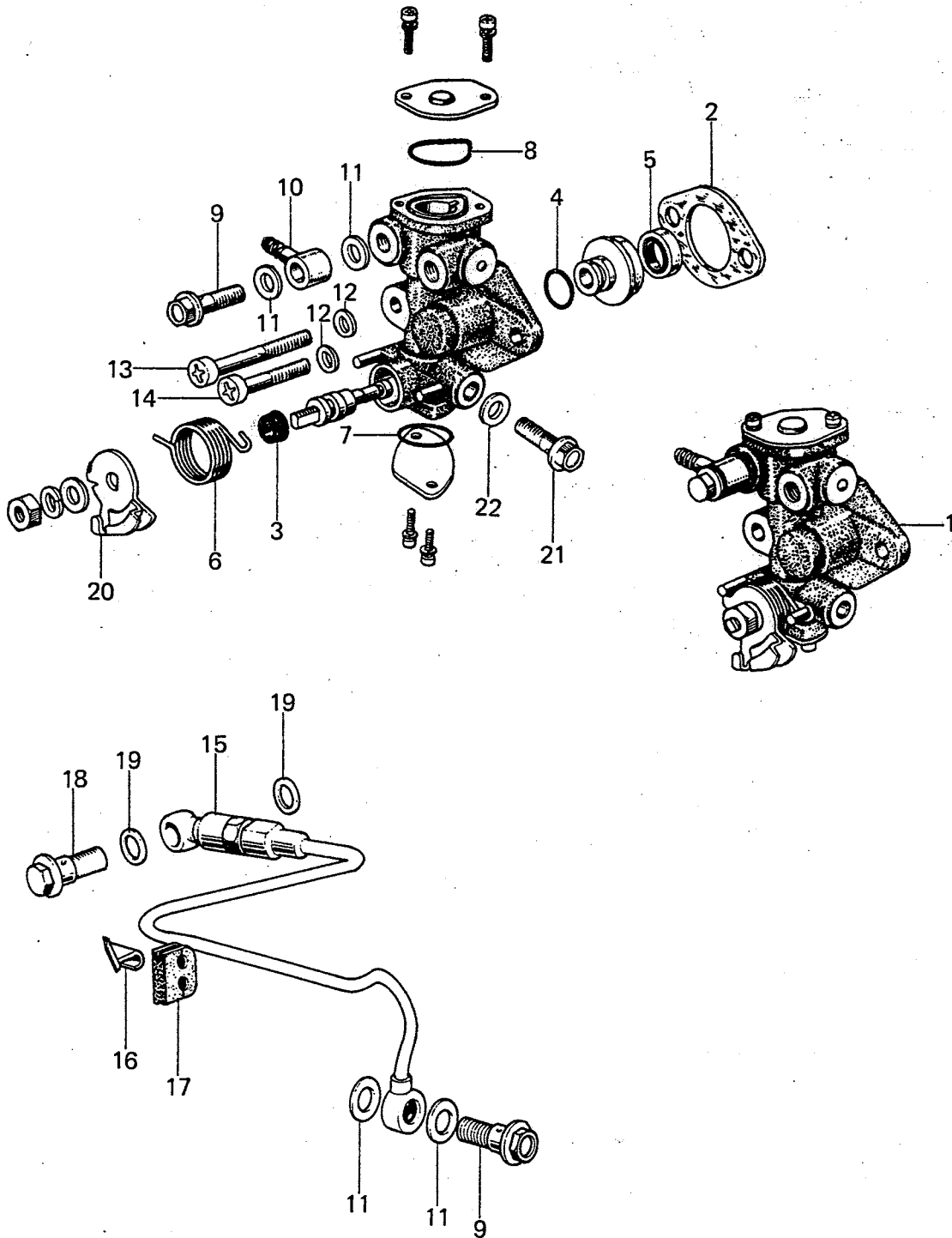
11. エアークリーナー, マフラー

No.	部品番号	部品名	個数	備考
1	11010-1006	AIR CLEANER ASSY	1	
2	11013-1004	ELEMENT, air cleaner	1	
3	410B0400	WASHER, plain, 4 m/m	3	
4	220E0450A	SCREW, pan head, 4 x 50	3	
5	92037-1023	CLAMP, spring	1	
6	220B0614	SCREW, pan head, 6 x 14	1	
7	461F0600	WASHER, spring, 6 m/m	1	
8	92022-116	WASHER, plain, 6 m/m	1	
9	92092-1001	BUSHING, rubber	1	
10	92037-006	CLAMP, air cleaner	1	
11	220B0620	SCREW, pan head 6 x 20	1	
12	14025-1007	COVER, muffler	1	
13	463H0600	WASHER, lock, 6 m/m	1	
14	220E0612	SCREW, pan head, 6 x 12	1	
15	110B0820	BOLT, hex head, 8 x 20	1	
16	461F0800	WASHER, spring, 8 m/m	1	
17	410B0800	WASHER, plain, 8 m/m	1	
18	56018-216	EMBLEM	1	
19	18065-009	INSULATOR, heat	1	
20	18001-1011-21	MUFFLER ASSY	1	
21	110B0608	BOLT, hex head, 6 x 8	2	
22	461F0600	WASHER, spring, 6 m/m	2	
23	49099-1003	RAFFLE PIPE, muffler	1	
24	11012-1022	CAP, rubber, 16 x 22 x 11	1	

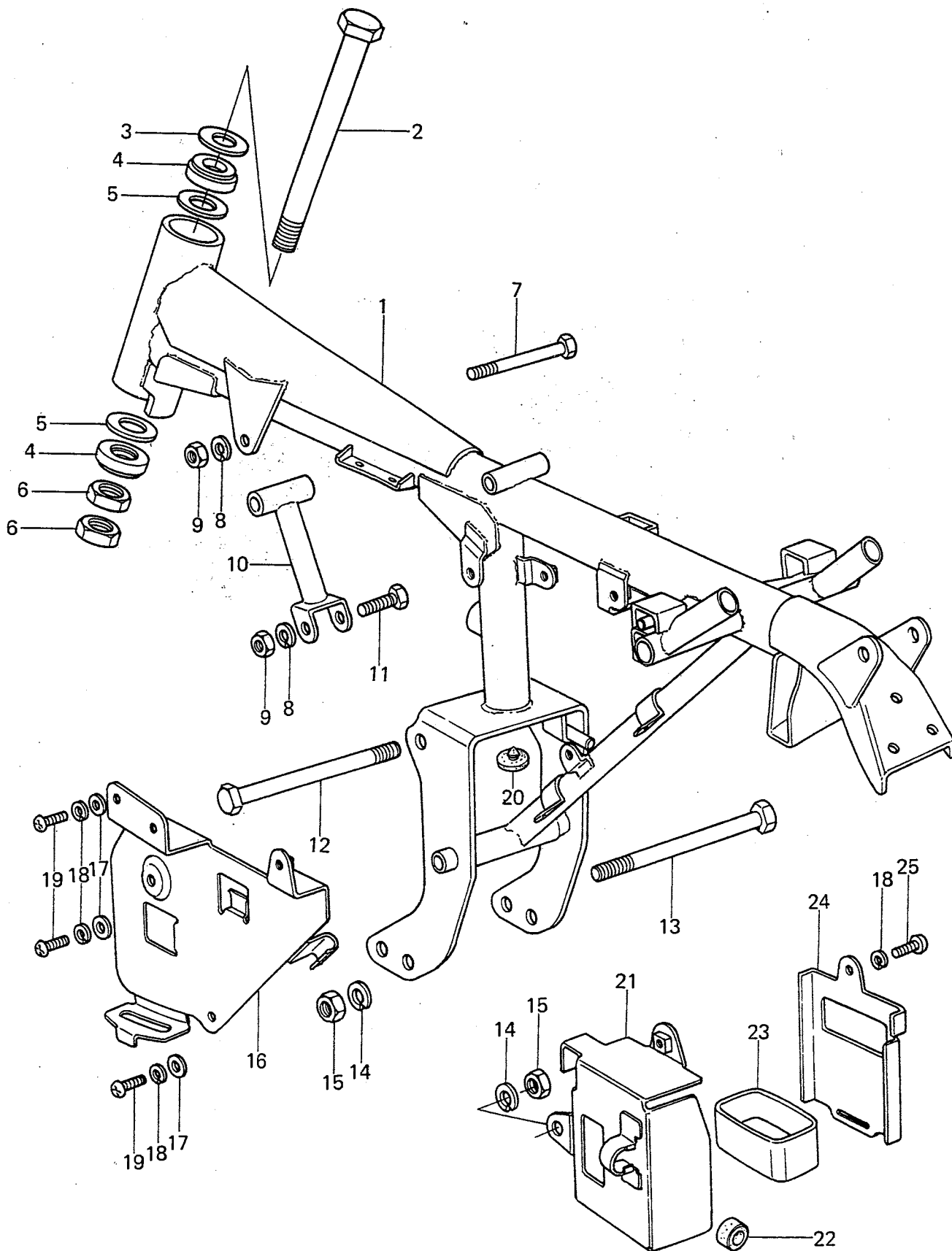
12. オイルポンプ

No.	部品番号	部品名	個数備考
1	16082-1004	OIL PUMP ASSY	1
2	16094-002	GASKET, oil pump	1
3	16089-001	"X" RING, cam shaft	1
4	16090-002	"O" RING, oil pump shaft	1
5	16091-001	OIL SEAL, oil pump shaft	1
6	92081-1048	SPRING, oil pump lever, Yellow	1
7	16090-004	"O" RING, lower cap	1
8	16088-002	"O" RING, upper cap	1
9	92060-013	BOLT, oil pump banjo	2
10	92061-009	CONNECTOR, banjo	1
11	92022-077	WASHER, oil pump banjo	4
12	92022-037	WASHER, oil pump	2
13	220B0528A	SCREW, pan head, 5 x 28	1
14	220B0514A	SCREW, pan head, 5 x 14	1
15	16134-015	PIPE, oil	1
16	16068-006	BRACKET, oil pipe	1
17	92071-049	GROMMET, oil pipe	1
18	92060-015	BOLT, check valve banjo	1
19	92065-023	GASKET, check valve	2
20	16096-009	LEVER, oil pump cable	1
21	92009-1010	BOLT, air vent	1
22	92022-1006	WASHER	1

12. オイルポンプ



13. フレーム



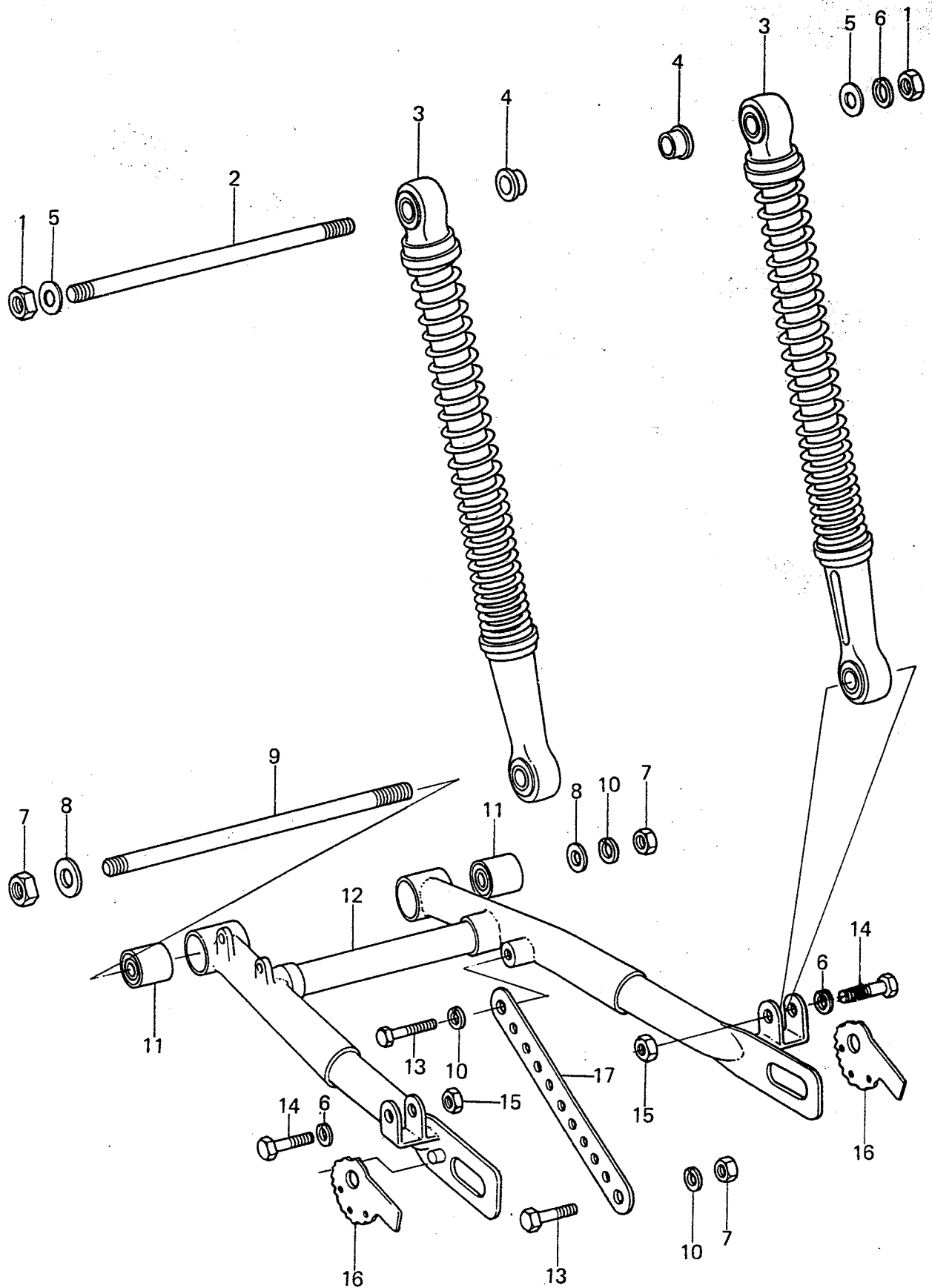
13. フレーム

No.	部品番号	部 品 名	個 数	備 考
1	32002-1011	FRAME	1	
2	92001-156	BOLT, steering head	1	
3	411D1600	WASHER, plain, 16 m/m	1	
4	92045-1003	BEARING, ball, steering	2	F-PCK40D
5	92022-303	WASHER, plain	2	I.D.=19φ
6	315B1600	NUT, 16 m/m	2	
7	110B0885	BOLT, hex head, 8 x 85	1	
8	461F0800	WASHER, spring, 8 m/m	2	
9	311B0800	NUT, 8 m/m	2	
10	31076-016	TUBE, down	1	
11	110B0840	BOLT, hex head, 8 x 40	1	
12	113B10105	BOLT, hex head, 10 x 105	1	
13	113B10110	BOLT, hex head, 10 x 110	1	
14	461F1000	WASHER, spring, 10 m/m	2	
15	313B1000	NUT, 10 m/m	2	
16	32052-1004	BRACKET, oil tank	1	
17	410B0600	WASHER, plain, 6 m/m	3	
18	461F0600	WASHER, spring, 6 m/m	4	
19	220B0616	SCREW, pan head, 6 x 16	3	
20	92075-078	DAMPER	1	
21	32097-1004	CASE, battery	1	
22	92075-016	DAMPER, battery case	1	
23	32103-018	MAT, battery	1	
24	14025-1005	COVER, battery case	1	
25	220B0612	SCREW, pan head, 6 x 12	1	

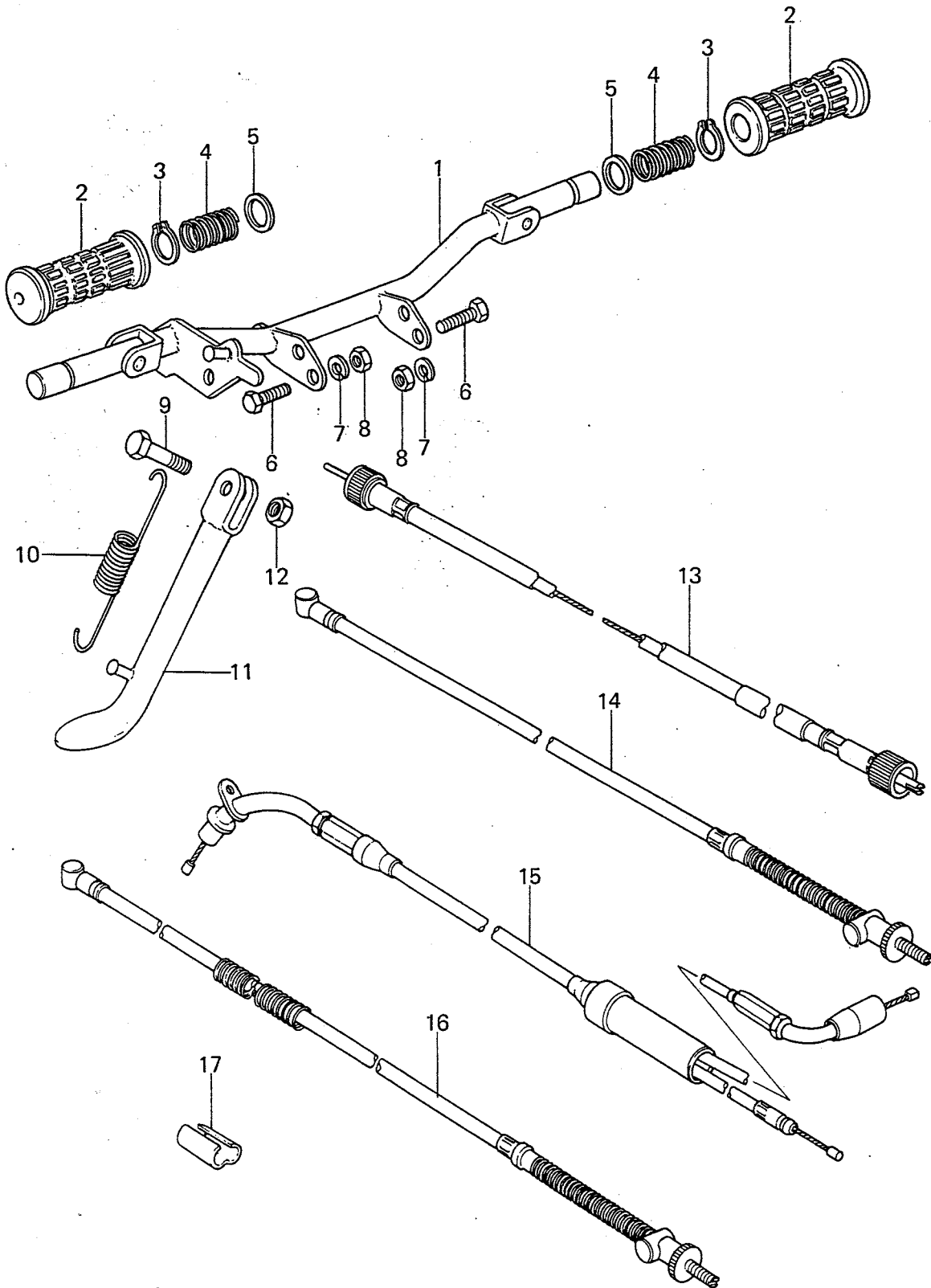
14. スイングアーム, リヤショックアブソーバー

No.	部品番号	部 品 名	個 数	備 考
1	313B1200A	NUT, 12 m/m	2	
2	92006-006	STUD, 12 m/m	1	
3	45014-1014	SHOCK ABSORBER, rear	2	
4	92027-1050	COLLAR, rear shock, upper, L = 7 m/m	2	
5	411B1200	WASHER, plain, 12 m/m	2	
6	461F1200	WASHER, spring, 12 m/m	3	
7	313B1000	NUT, 10 m/m	3	
8	410B1000	WASHER, plain, 10 m/m	2	
9	33032-008	SHAFT, swinging arm pivot	1	
10	461F1000	WASHER, spring, 10 m/m	3	
11	92092-006	BUSHING, swinging arm pivot	2	
12	33001-037	SWING ARM	1	
13	113B1018	BOLT, hex head, 10 x 18	2	
14	113B1236A	BOLT, hex head, 12 x 36	2	
15	315B1200A	NUT, 12 m/m	2	
16	33040-042	ADJUSTER, chain	2	
17	43007-025	TORQUE LINK, rear brake	1	

14. スイングアーム, リヤショックアブソーバー



15. スタンド, フートレスト, ケーブル



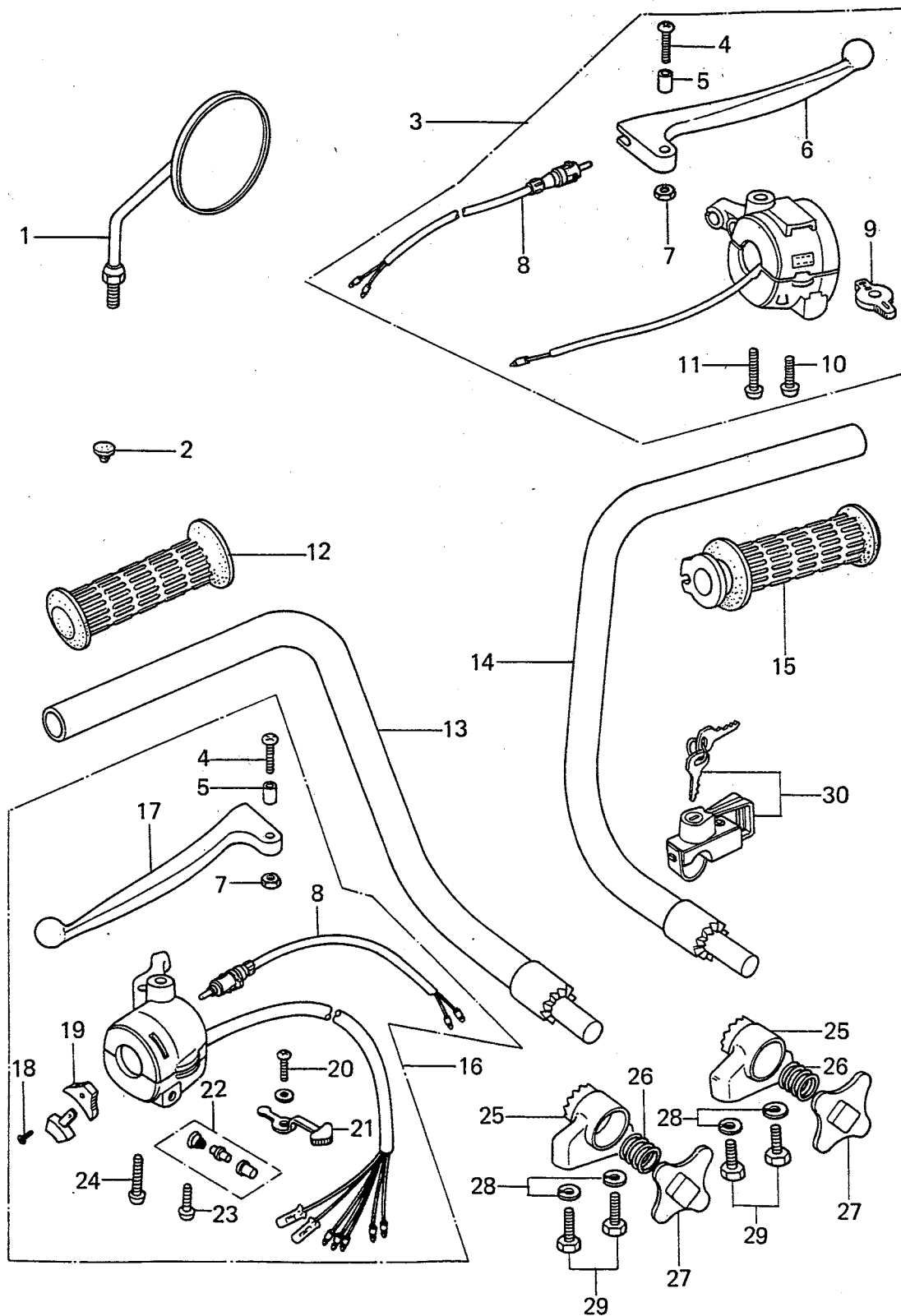
15. スタンド, フートレスト, ケーブル

No.	部品番号	部 品 名	個 数	備 考
1	34002-029	BAR, footrest	1	
2	92076-006	RUBBER, footrest	2	
3	480J1600	CIRCLIP, 16 m/m	2	
4	34006-002	SPRING, footrest peg	2	
5	92022-049	WASHER, folding peg	2	
6	113B1018	BOLT, hex head, 10 x 18	2	
7	461F1000	WASHER, spring, 10 m/m	2	
8	314B1000	NUT, 10 m/m	2	
9	113B1025	BOLT, hex head, 10 x 25	1	
10	34023-005	SPRING, stand	1	
11	34024-050	STAND, side	1	
12	315B1000	NUT, 10 m/m	1	
13	54001-1003	CABLE, speedometer	1	
14	54005-1003	CABLE, front brake	1	
15	54012-1006	CABLE, throttle	1	
16	54005-1004	CABLE, rear brake	1	
17	92037-069	CALMP, cable	1	

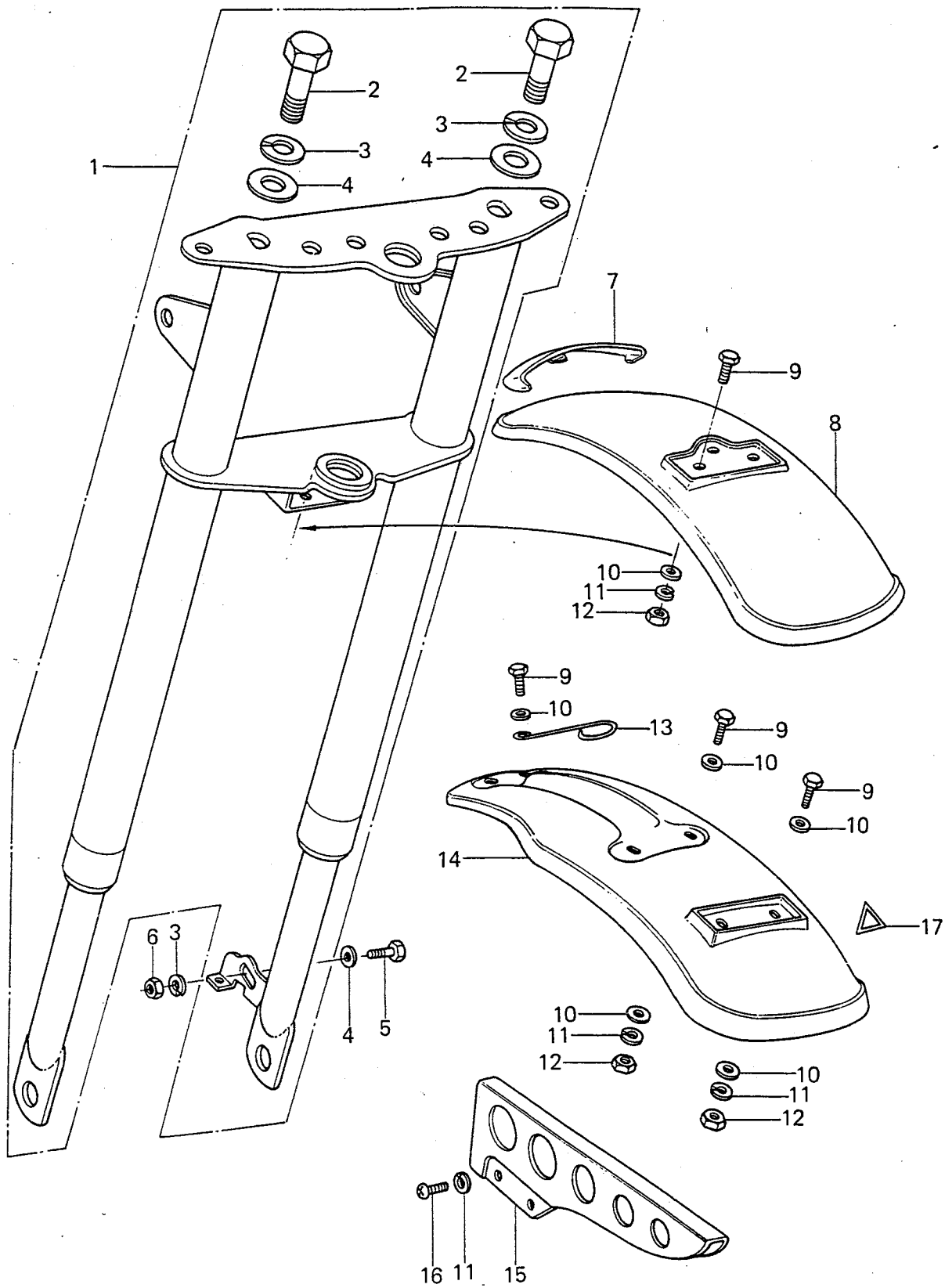
16. ハンドルバー, グリップ

No.	部品番号	部 品 名	個 数	備 考
1	56002-020	REAR VIEW MIRROR, R.H.	1	
2	92102-009	CAP, rear view mirror	1	
3	46091-1015	HOUSING ASSY, control, R.H.	1	
4	220B0522A	SCREW, pan head, 5 x 22	2	
5	92027-1042	COLLAR, lever	2	
6	46058-019	LEVER, front brake	1	
7	92019-014	NUT, lock, 5 m/m	2	
8	27021-004	SWITCH, brake	2	
9	92077-1002	KNOB, engine stop	1	
10	220B0530A	SCREW, pan head, 5 x 30	1	
11	92009-1017	SCREW, pan head, 5 x 48	1	
12	46075-028	RUBBER, L.H. gripe	1	
13	46007-011	HANDLEBAR, L.H.	1	
14	46007-010	HANDLEBAR, R.H.	1	
15	46019-041	GRIP ASSY, throttle	1	
16	46091-1014	HOUSING ASSY, control, L.H.	1	
17	46092-024	LEVER, clutch	1	
18	221B0308A	SCREW, countersunk head, 3 x 8	1	
19	46044-013	KNOB, lighting switch	1	
20	220B0305A	SCREW, pan head, 3 x 5	1	
21	92077-1003	KNOB, signal lamp switch	1	
22	27010-1009	SWITCH ASSY, horn button	1	
23	220B0525A	SCREW, pan head, 5 x 25	1	
24	92009-1018	SCREW, pan head, 5 x 38	1	
25	46012-009	HOLDER, handlebar	2	
26	92081-090	SPRING	2	
27	46129-001	KNOB, handlebar holder	2	
28	461F1000	WASHER, spring, 10 m/m	4	
29	113B1018	BOLT, hex head, 10 x 18	4	
30	27016-5004	LOCK ASSY, helmet	1	

16. ハンドルバー, グリップ



17. フロントフォーク, フェンダー



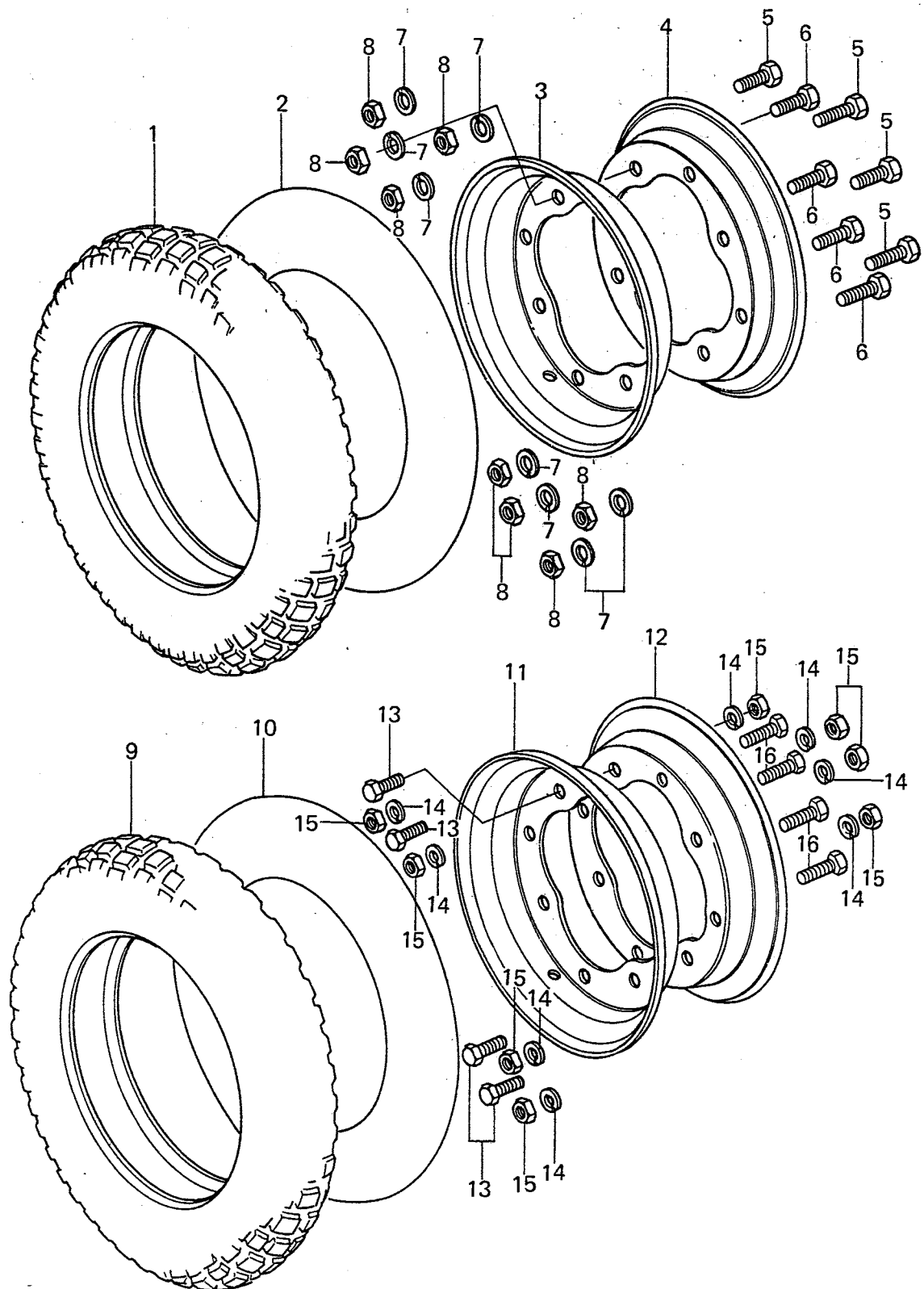
17. フロントフォーク, フェンダー

No.	部品番号	部 品 名	個 数	備 考
1	44001-1010	FRONT FORK ASSY	1	
2	113N1025	BOLT, hex head, 10 x 25	2	
3	461F1000	WASHER, spring, 10 m/m	3	
4	411B1000	WASHER, plain, 10 m/m	3	
5	113B1020	BOLT, hex head, 10 x 20	1	
6	314B1000	NUT, 10 m/m	1	
7	56030-1001	EMBLEM, front fender	1	
8	35004-087-6W	FENDER, front, Lime Green	1	
	35004-087-6X	FENDER, front, Classic White	1	
9	110B0614	BOLT, hex head, 6 x 14	9	
10	92022-024	WASHER, plain, 6 m/m	11	
11	461F0600	WASHER, spring, 6 m/m	11	
12	310B0600	NUT, 6 m/m	9	
13	92037-172	CLAMP, rear brake cable	1	
14	35023-013-6W	FENDER, rear, Lime Green	1	
	35023-013-6X	FENDER, rear, Classic White	1	
15	36014-036-21	COVER, chain, Flat Black	1	
16	220B0610	SCREW, pan head, 6 x 10	2	
17	56011-001	EMBLEM, rear fender	1	

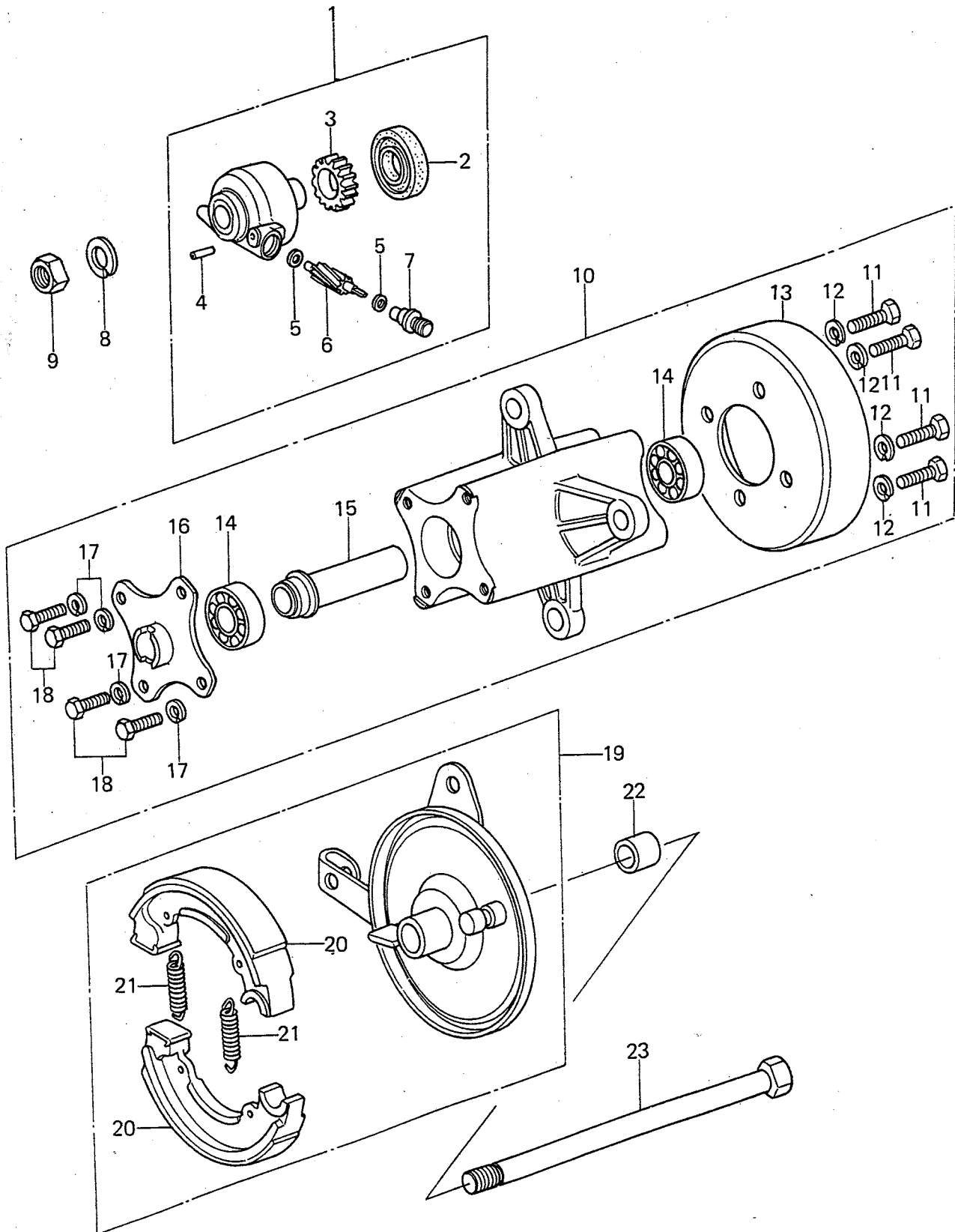
18. ホイール

No.	部品番号	部 品 名	個 数	備 考
1	41002-1021	TIRE, 3.50-8 2PR	1	TRAILWING2
2	41022-037	TUBE, tire, 3.50-8	1	
3	41025-081	RIM, 2.50-8	1	With Valve Hole
4	41025-082	RIM, 2.50-8	1	
5	113B1016	BOLT, hex head, 10 x 16	4	
6	113B1025	BOLT, hex head, 10 x 25	4	
7	461F1000	WASHER, spring, 10 m/m	8	
8	314B1000	NUT, 10 m/m	8	
9	41002-1021	TIRE, 3.50-8 2PR	1	TRAILWING2
10	41022-037	TUBE, tire, 3.50-8	1	
11	41025-081	RIM, 2.50-8	1	With Valve Hole
12	41025-082	RIM, 2.50-8	1	
13	113B1025	BOLT, hex head, 10 x 25	4	
14	461F1000	WASHER, spring, 10 m/m	8	
15	314B1000	NUT, 10 m/m	8	
16	113B1016	BOLT, hex head, 10 x 16	4	

18. ホイール



19. フロントハブ



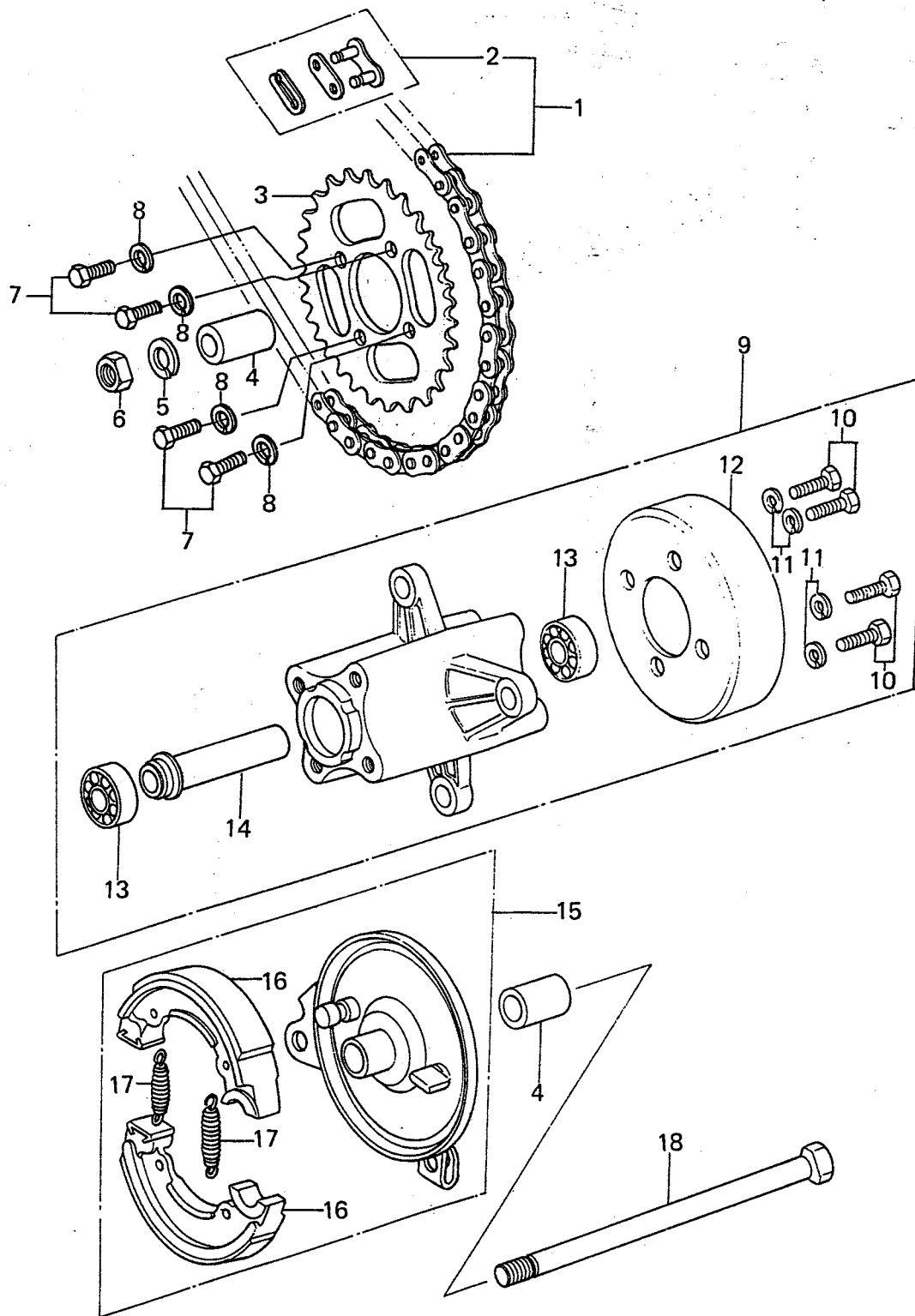
19. フロントハブ

No.	部品番号	部 品 名	個 数	備 考
1	41078-1001	GEAR BOX ASSY	1	
2	654A224207	OIL SEAL, 22 x 42 x 7	1	
3	41060-1004	GEAR, speedometer	1	16T
4	41082-001	SPRING PIN	1	
5	41063-001	WASHER, thrust	2	
6	41060-1005	PINION, speedometer	1	10T
7	41062-005	BUSHING, speedometer cable	1	
8	461F1200	WASHER, spring, 12 m/m	1	
9	315B1200A	NUT, 12 m/m	1	
10	41034-1004	DRUM ASSY, front brake	1	
11	92001-017	BOLT, hex head, 10 x 28	4	
12	461F1000	WASHER, spring, 10 m/m	4	
13	41054-003	DRUM, brake	1	
14	601B6201Z	BALL BEARING, # 6201Z	2	
15	42010-020	SPACER, bearing	1	
16	41064-1001	RECEIVER, speedometer gear	1	
17	461F0600	WASHER, spring, 6 m/m	4	
18	110B0616	BOLT, hex head, 6 x 16	4	
19	41035-1009	PANEL ASSY, front brake	1	
20	41048-1010	SHOE, brake	2	
21	41049-009	SPRING, brake shoe	2	
22	41069-014	COLLAR, front axle	1	
23	41068-033	AXLE, front	1	

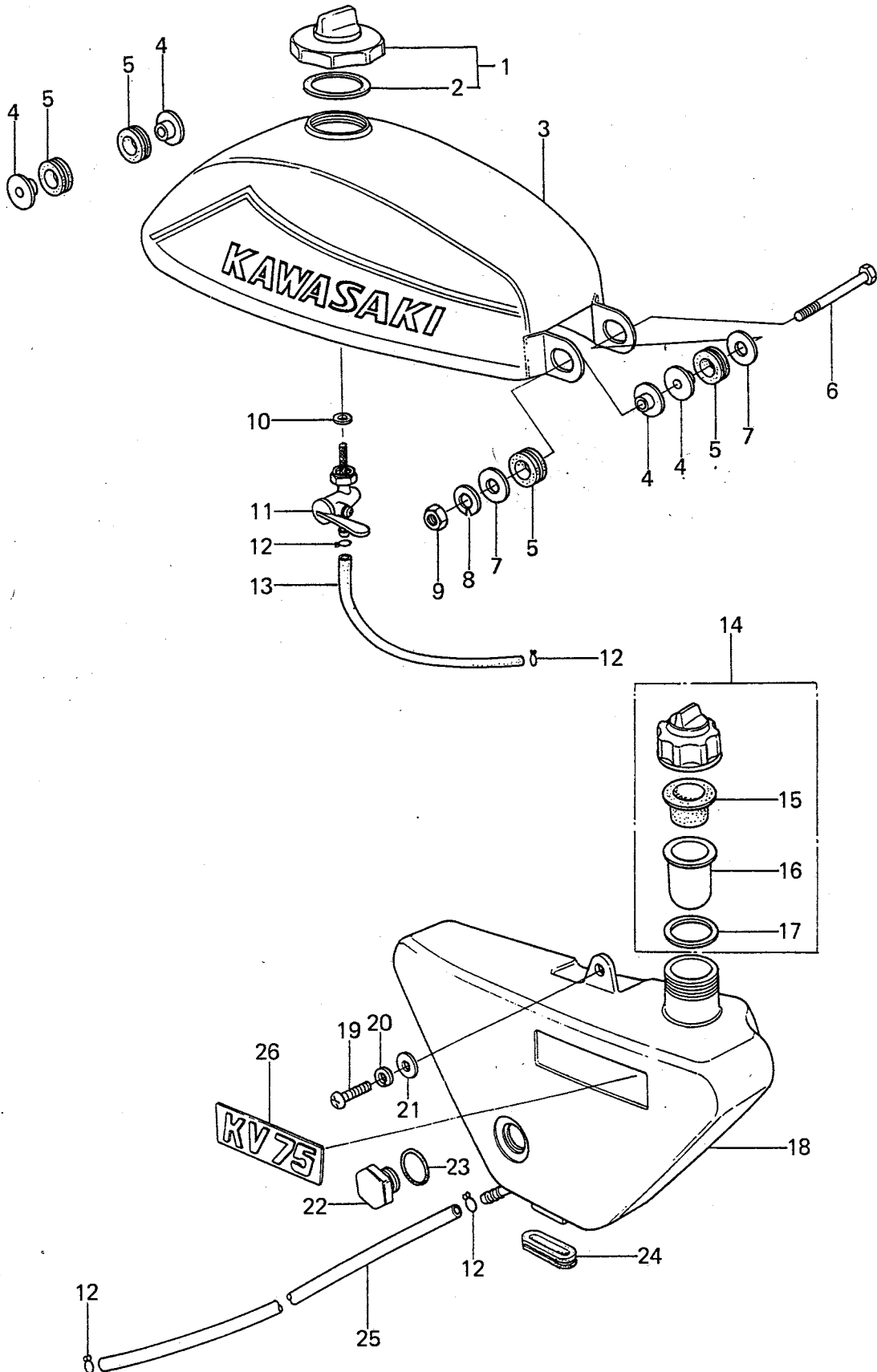
20. リヤハブ

No.	部品番号	部品名	個数	備考
1	92057-1006	CHAIN ASSY, drive, 88RE, DID420	1	
2	92058-003	JOINT, drive chain	1	
3	42041-1004	REAR SPROCKET, 32T	1	
4	42032-029	COLLAR, rear axle	2	
5	461F1200	WASHER, spring, 12 m/m	1	
6	313B1200A	NUT, 12 m/m	1	
7	92001-017	BOLT, hex head, 10 x 28	4	
8	461F1000	WASHER, spring, 10 m/m	4	
9	42005-025	DRUM ASSY, rear brake	1	
10	92001-017	BOLT, hex head, 10 x 28	4	
11	461F1000	WASHER, spring, 10 m/m	4	
12	41054-003	DRUM, rear brake	1	
13	601B6201Z	BEARING, ball # 6201Z	2	
14	42010-020	SPACER, bearing	1	
15	41035-1010	PANEL ASSY, rear brake	1	
16	41048-1010	SHOE, brake	2	
17	41049-009	SPRING, brake shoe	2	
18	42031-028	AXLE, rear	1	

20. リヤハブ



21. フューエルタンク, オイルタンク



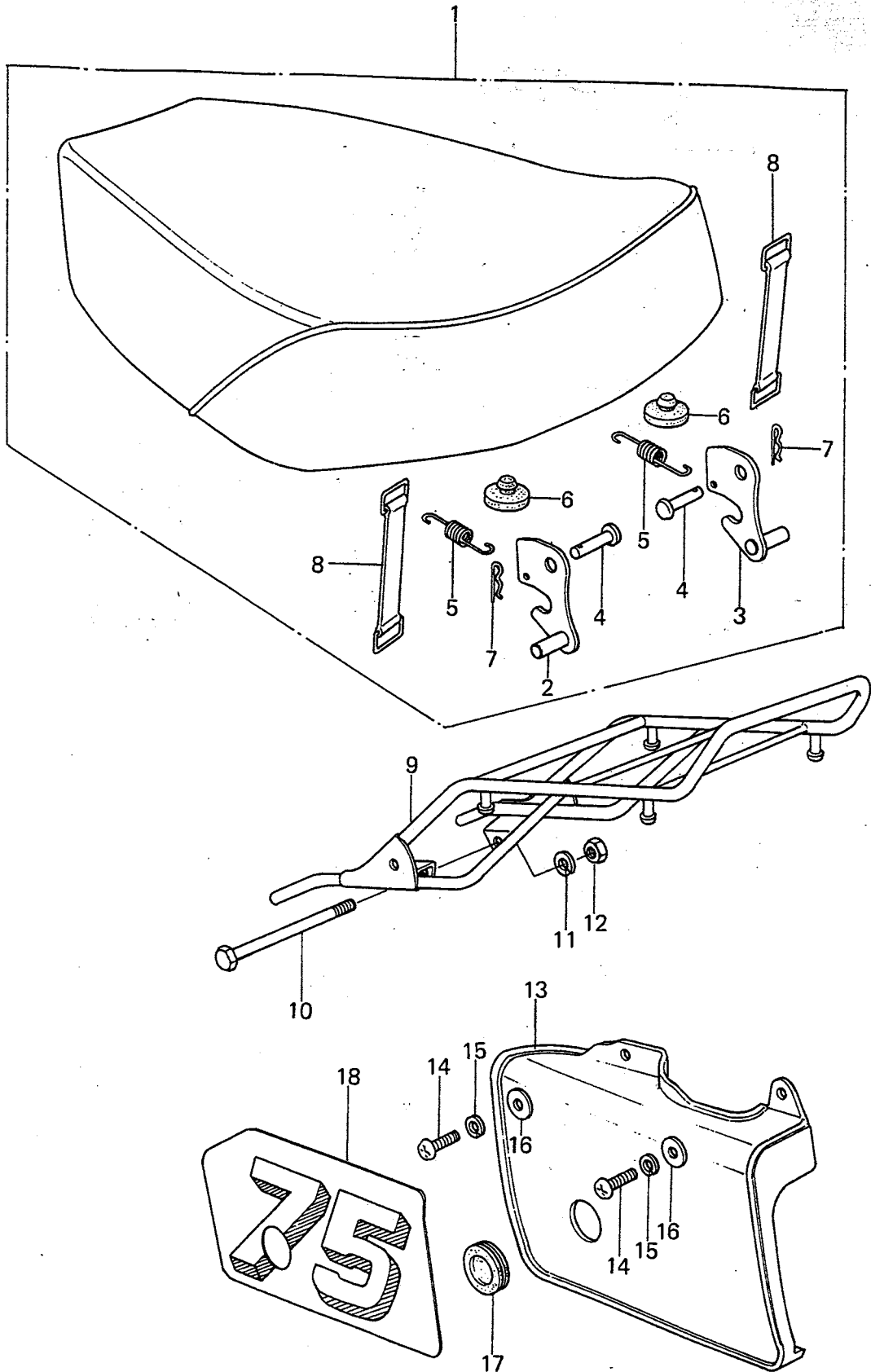
21. フューエルタンク, オイルタンク

No.	部品番号	部品名	個数	備考
1	51048-005	CAP ASSY, fuel tank	1	
2	51059-006	GASKET, fuel tank cap	1	
3	51001-064-7F	TANK, fuel, Lime Green	1	
	51001-064-7R	TANK, fuel, Classic White	1	
4	92027-080	COLLAR,	4	
5	92075-019	DAMPER RUBBER, tank	4	
6	110B0885	BOLT, hex head, 8 x 85	1	
7	92022-035	WASHER, fuel tank fitting	2	
8	461F0800	WASHER, spring, 8 m/m	1	
9	311B0800	NUT, 8 m/m	1	
10	92065-075	GASKET, fuel tap joint	1	
11	51023-030	TAP ASSY, fuel	1	
12	92037-010	CLAMP, fuel tube	4	
13	92059-068	TUBE, fuel tank	1	
14	52002-002	CAP ASSY, oil tank	1	
15	52004-008	STRAINER, oil tank cap	1	
16	52004-007	CASE, oil tank strainer	1	
17	92065-079	GASKET, oil tank cap	1	
18	52001-046	TANK, oil, Natural	1	
19	220B0616	SCREW, pan head, 6 x 16	1	
20	461F0600	WASHER, spring, 6 m/m	1	
21	92022-024	WASHER, plain, 6 m/m	1	
22	52015-002	GAUGE, oil level	1	
23	92055-051	"O" RING, 20 m/m	1	
24	92075-070	DAMPER	1	
25	92059-063	TUBE, oil tank	1	
26	56018-216	EMBLEM, oil tank	1	

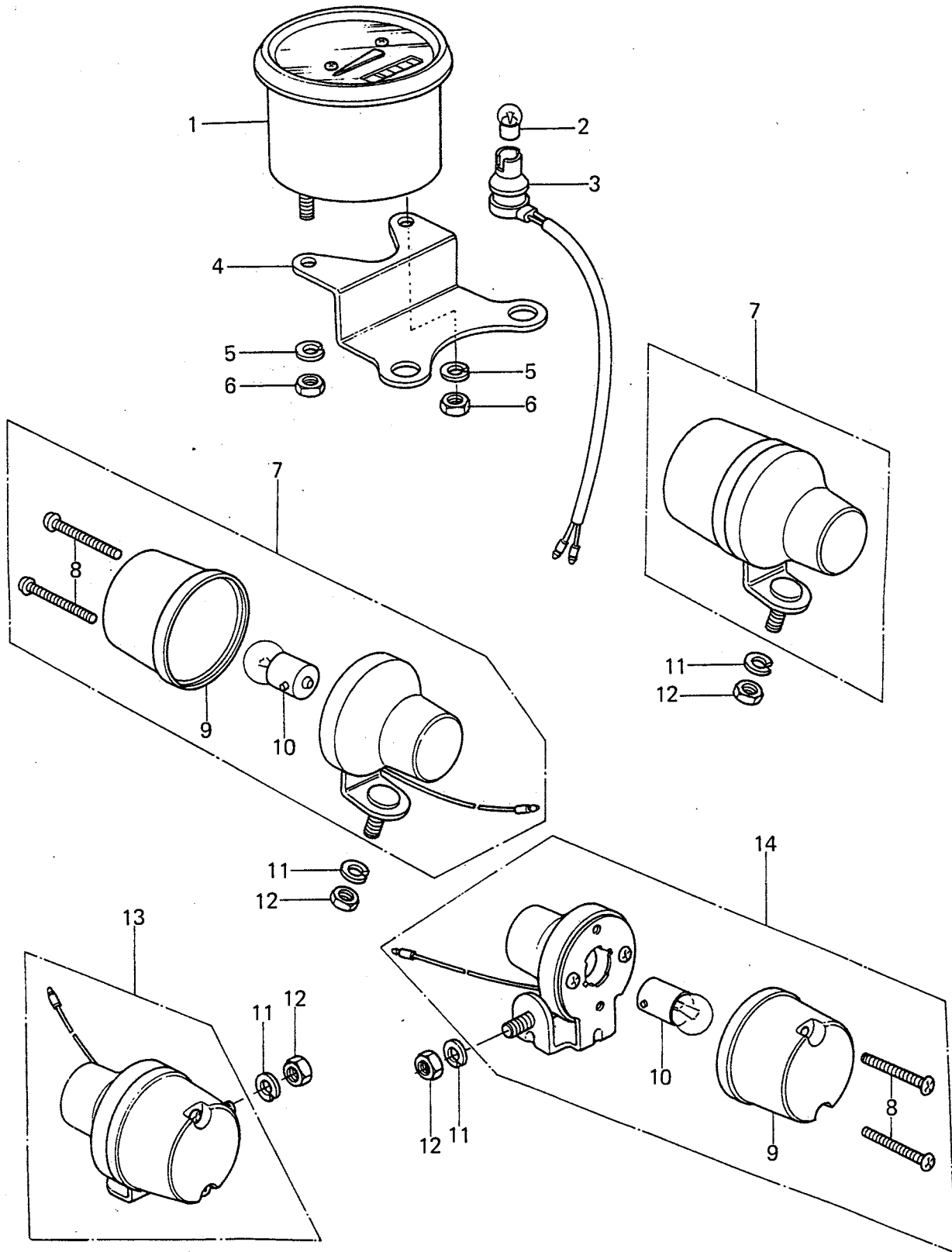
22. シート, サイドカバー, キャリア

No.	部品番号	部 品 名	個 数	備 考
1	53001-1003	SEAT ASSY	1	
2	53008-033	HOOK, seat, L.H.	1	
3	53008-034	HOOK, seat, R.H.	1	
4	92043-092	PIN	2	
5	53012-003	SPRING	2	
6	92075-281	DAMPER	2	
7	92041-003	PIN	2	
8	92072-066	BAND, tool	2	
9	53029-1002	CARRIER, luggage	1	
10	110B0890	BOLT, hex head, 8 x 90	1	
11	461F0800	WASHER, spring, 8 m/m	1	
12	311B0800	NUT, 8 m/m	1	
13	36001-1007-6W	COVER, L.H. side, Lime Green	1	
	36001-1007-6X	COVER, R.H. side, Classic White	1	
14	220B0616	SCREW, pan head, 6 x 16	2	
15	461F0600	WASHER, spring, 6 m/m	2	
16	92022-024	WASHER, plain, 6 m/m	2	
17	92071-080	GROMMET, side cover	1	
18	56018-1014	MARK, side cover	1	Use for Classic White
	56018-1015	MARK, side cover	1	Use for Lime Green

22. シート, サイドカバー, キャリア



23. スピードメーター，ターンシグナルランプ



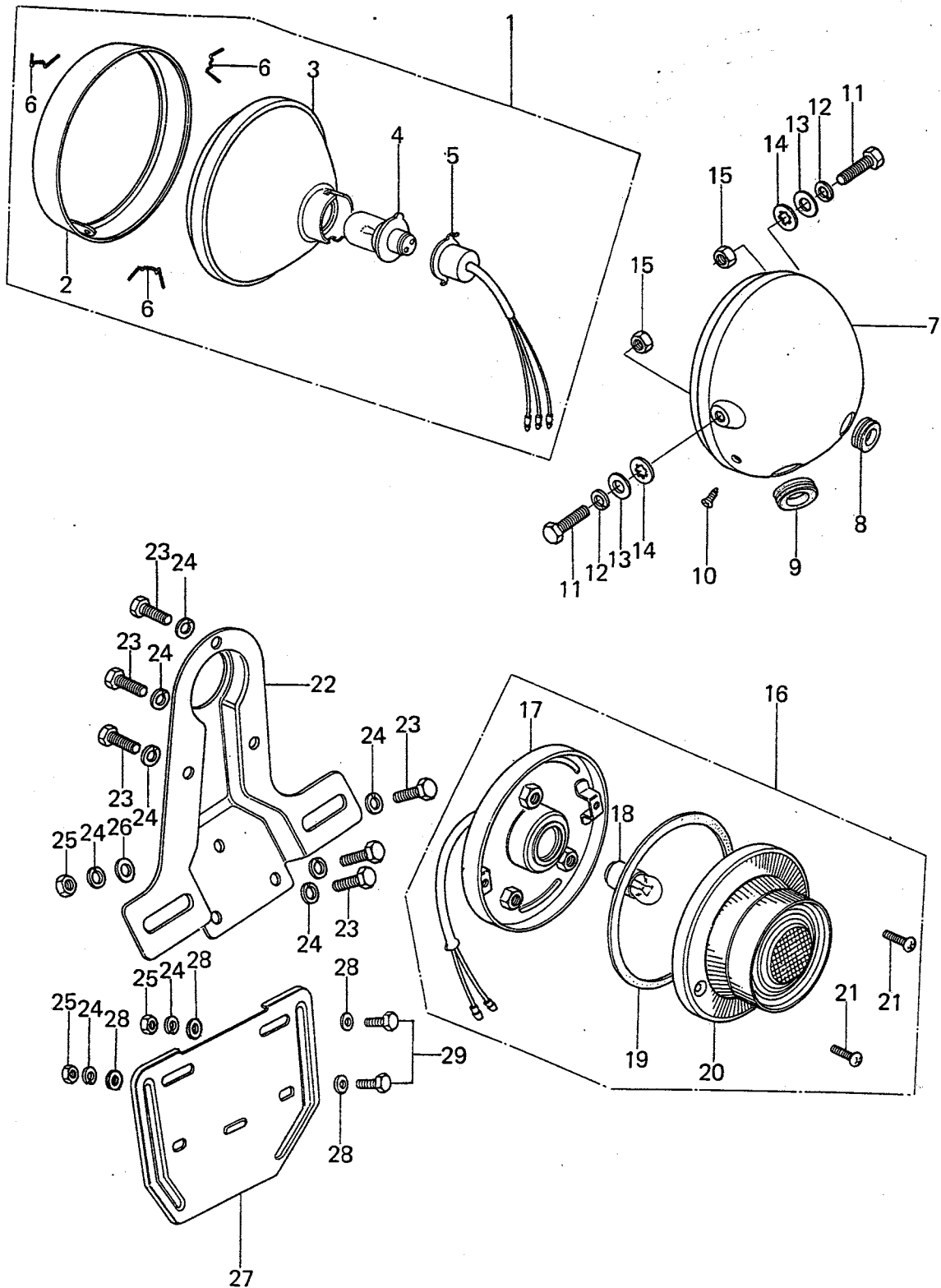
23. スピードメーター, ターンシグナルランプ

No.	部品番号	部 品 名	個 数	備 考
1	25005-1019	SPEEDOMETER ASSY, KPH	1	
2	92069-024	BULB, 6V-1.7W	1	
3	25010-021	SOCKET ASSY, speedometer	1	
4	25008-1003	BRACKET, speedometer	1	
5	461F0500A	WASHER, spring, 5 m/m	2	
6	311B0500A	NUT, 5 m/m	2	
7	23040-1007	LAMP ASSY, turn signal, front	2	
8	220B0330A	SCREW, pan head, 3 x 30	8	
9	23048-1003	LENS, turn signal lamp	4	
10	92069-042	BULB, 6V 8W	4	
11	461F0800	WASHER, spring, 8 m/m	4	
12	311B0800	NUT, 8 m/m	4	
13	23040-1009	LAMP ASSY, turn signal, rear, L.H.	1	
14	23040-1008	LAMP ASSY, turn signal, rear, R.H.	1	

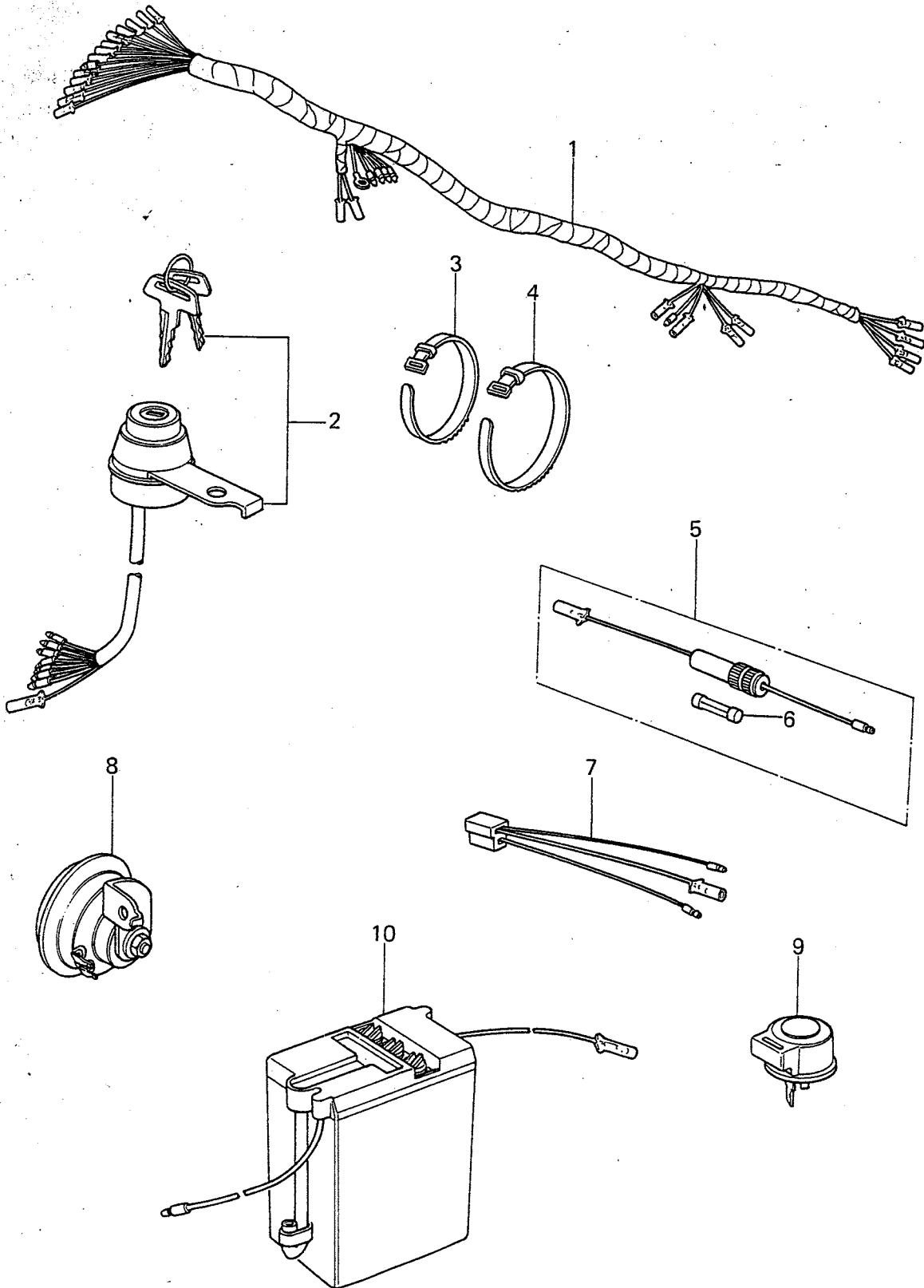
24. ヘッドランプ, テールランプ

No.	部品番号	部 品 名	個 数	備 考
1	23004-1007	LAMP UNIT, head	1	
2	23006-043	RIM, head lamp	1	
3	23007-1004	LENS UNIT, head lamp	1	
4	92069-021	BULB, 6V 15/15W	1	
5	23008-1012	SOCKET ASSY, head lamp	1	
6	23009-014	CLAMP, head lamp lens	3	
7	23005-1006-21	BODY, head lamp, Flat Black	1	
8	23023-007	CROMMET, head lamp	1	
9	23023-011	GROMMET, head lamp	1	
10	23019-025	SCREW, oval countersunk head, 5 x 14	1	
11	113B1020	BOLT, hex head, 10 x 20	2	
12	461F1000	WASHER, spring, 10 m/m	2	
13	411B1000	WASHER, plain, 10 m/m	2	
14	463H1000	WASHER, toothed, 10 m/m	2	
15	92016-027	NUT, 10 m/m	2	
16	23025-035	LAMP ASSY, tail	1	
17	23027-025	SOCKET, tail lamp	1	
18	92069-020	BULB, 6V 10/3W	1	
19	23028-012	GASKET, tail lamp lens	1	
20	23026-009	LENS, tail lamp	1	
21	220E0410A	SCREW, pan head, 4 x 10	2	
22	35028-005-10	BRACKET, tail lamp, Black	1	
23	110B0612	BOLT, hex head, 6 x 12	6	
24	461F0600	WASHER, spring, 6 m/m	9	
25	311B0600	NUT, 6 m/m	3	
26	410B0600	WASHER, plain, 6 m/m	1	
27	11034-1117	BRACKET, licence plate	1	
28	92022-125	WASHER, plain, 6 m/m	4	
29	110B0620	BOLT, hex head, 6 x 20	2	

24. ヘッドランプ、テールランプ



25. 車体電装品



25. 車体電装品

No.	部品番号	部品名	個数	備考
1	26001-1014	WIRING HARNESS, main	1	
2	27005-5004	SWITCH ASSY, ignition	1	
3	92072-030	BAND, rubber	4	L = 123 m/m
4	92072-032	BAND, rubber	3	L = 218 m/m
5	26004-008	FUSE ASSY	1	
6	26006-003	FUSE, 10A	1	
7	26011-1008	WIRE, lead, rectifier	1	
8	27003-1001	HORN	1	
9	27002-010	RELAY, turn signal	1	
10	26012-023	BATTERY, 6V 2AH	1	6N2-2A-6